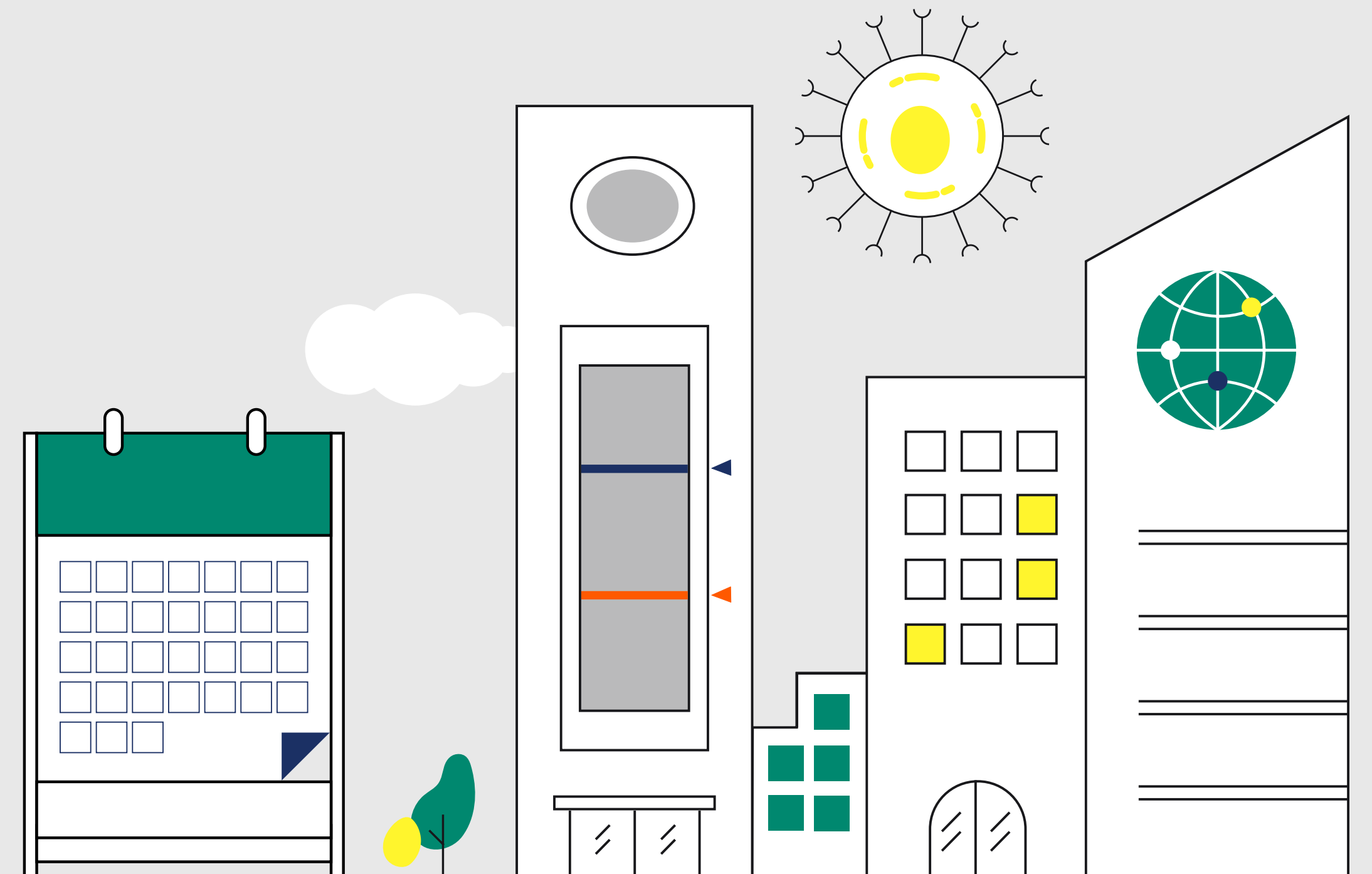


# Immunoassay development services which will you choose?



# The choice is yours

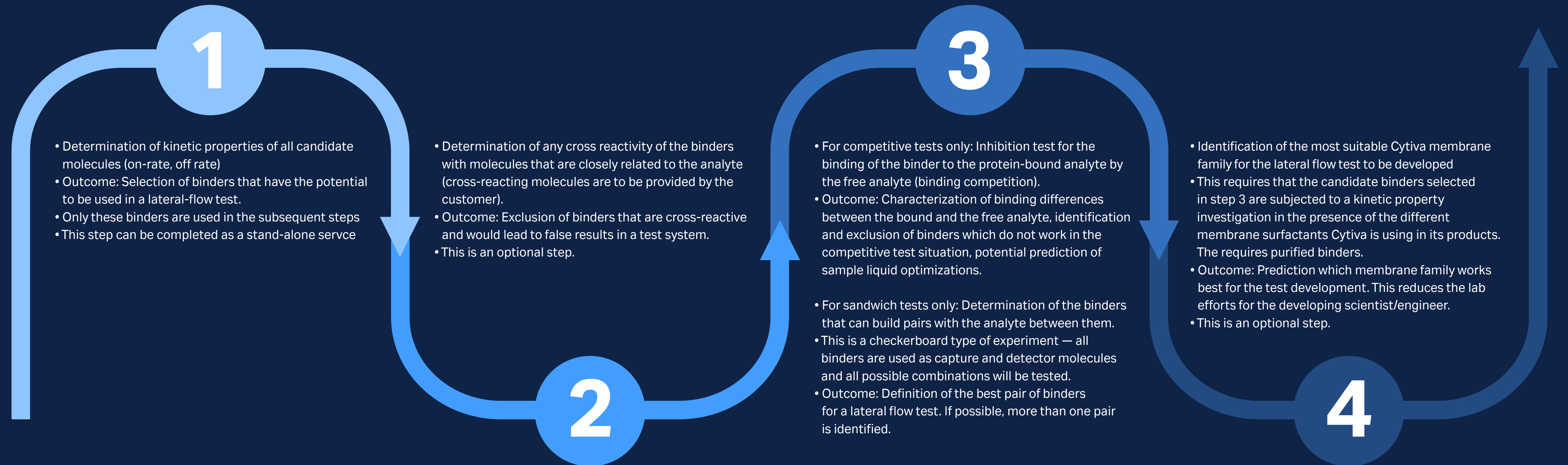
Are you having technical challenges with your immunoassay development? Maybe you don't have the infrastructure or experience to resolve the issues in a reasonable timeframe.

Choose from a range of training and service options available from Cytiva that can provide you with a solution.

	Beginner course	Development workshop	Customized seminars	Surface plasmon resonance (SPR) analysis (see more on next page)	Contract / custom development	Custom material development (complex)
<b>Location</b>	Dassel, Germany	Virtual or at customer premises	At customer premises	Dassel, Germany	Dassel, Germany	Dassel, Germany
<b>Duration</b>	5 days	5 days	Session dependent	Several weeks	6 to 12 months	6 to 12+ months
<b>Content</b>	<ul style="list-style-type: none"> <li>• Introduction to the theory and practice of lateral flow test development using a model system</li> <li>• Explains how to develop lateral-flow tests</li> <li>• Opportunity to put theory into practice</li> <li>• Access to specialist knowledge and experience</li> </ul>	<ul style="list-style-type: none"> <li>• Focus on process, equipment and applications</li> <li>• Explains how to perform functions and tests</li> <li>• Covers upscaling support and technical transfers</li> <li>• Gets into the detail of test performance and optimizing results</li> <li>• Access to specialist knowledge and experience</li> </ul>	<ul style="list-style-type: none"> <li>• Highlights development and manufacturing of a rapid test (or parts of it)</li> <li>• Feasibility study or troubleshooting an assay / development using customer reagents</li> <li>• Flexible content dependant on customer requirements</li> <li>• Practical guidance, helpful tips and troubleshooting</li> <li>• Access to specialist knowledge and experience</li> </ul>	<ul style="list-style-type: none"> <li>• Identification, characterization and selection of antibodies and other binders for rapid test development using surface plasmon resonance</li> <li>• Accelerates the identification of suitable reagents for the test development process, reduces the efforts for the developing scientist/ engineer</li> <li>• Access to specialist knowledge, experience and equipment</li> </ul>	<ul style="list-style-type: none"> <li>• Covers the development of a lateral-flow test from an idea or prototype</li> <li>• End to end process</li> <li>• Cytiva can source appropriate reagents</li> <li>• Access to specialist knowledge, experience and equipment</li> </ul>	<ul style="list-style-type: none"> <li>• Investigating customization possibilities that may fit an end user application</li> <li>• Access to specialist knowledge, experience and equipment</li> </ul>

# Spotlight on SPR analysis

If you are looking for binders (antibodies, affirmers, aptamers, other affinity proteins) that are suitable for the development of a lateral flow test system from a number of candidate molecules (e.g. hybridoma supernatants), our SPR analysis service could be for you!



- Customer provides the candidate molecules from which the selection is to be done, and the analyte for which the binders are supposed to be specific.
- The binders should be purified, except for mouse monoclonal antibodies which can be analyzed as cell culture supernatants.
- For competitive tests, the customer also provides the analyte/carrier-protein conjugate.
- After each step, the results will be discussed to determine the next steps.

# Sessions will be hosted and run by

**Klaus Hochleitner**

**Global Lead Technical Product Specialist Diagnostics at Cytiva**

- Cell and molecular biologist
- Has worked on immuno- and molecular diagnostic applications for more than 30 years
- Regular presenter on lateral-flow diagnostics and materials used therein at workshops and scientific conferences since 1997
- Holds patents in this field



**Sarah Zachmann**

**Senior Diagnostic Scientist at Cytiva**

- Background in microbiology and infection biology
- Many years' experience working with early-stage developers and test development
- Focuses on teaching, training, and supporting diagnostic rapid test developers and manufacturers



# Don't just take our word for it...

Hutano Diagnostics completed a 3-day workshop with Cytiva Diagnostic Services to advance their rapid Ebola point-of-care test.



**The work that we have been doing here has helped us to reshape our R&D strategy and to become more efficient. [It] has saved us months of development."**

*Atherton Mutambwera  
Hutano Diagnostics, Founder, CEO*

Ubique Bio was the winner of the Dx Challenge in 2022 and benefited from a 3-day workshop at the Cytiva site in Dassel, Germany. They were looking to find the best way to incorporate synthetic peptides into a test strip and find the most efficient way to multiplex the strip.



**Cytiva experts added significant value to our ideas giving us a clearer perspective to our objectives and future directions."**

*Angelita Lorenzo  
Ubique Bio, Co-Founder and  
Chief Science Officer*



**Watch their videos and find out more about our services [here](#)**



Cytiva and the Drop logo are trademarks of Life Sciences IP Holdings Corporation or an affiliate doing business as Cytiva.

© 2024 Cytiva.

For local office contact information, visit [cytiva.com/contact](https://www.cytiva.com/contact)

CY43627-14Apr24-BR

