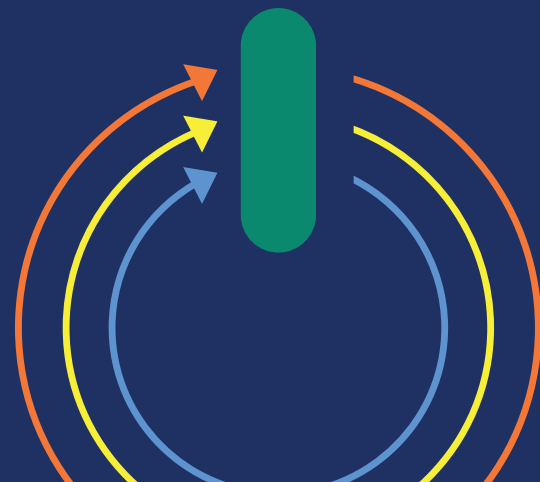


OptiRun™ service solutions

Bioprocess column training course



AxiChrom™ and Bioprocess glass (BPG) chromatography columns: Care and troubleshooting

Empower your operators to improve productivity

Your bioprocess column is a critical and versatile platform supporting your process scale-up and large-scale biopharmaceutical manufacturing.

Your end users can play an important role in increasing the long-term uptime and day-to-day operational availability of your columns by performing basic care, employing best practices, and performing routine maintenance.

Improve operational efficiency by maximizing uptime

Downtime of any duration can significantly disrupt your process development, production efforts, or cause missed deliveries of finished products wasting resources and money.

The training course for AxiChrom™ and BPG column care and troubleshooting teaches operators how to routinely maintain their equipment in a way that keeps it operating reliably.

Highlights of the course include

- Options to focus on AxiChrom™, BPG, or both
- Safety considerations
- AxiChrom™ or BPG overview
- System documentation
- Regularly scheduled maintenance procedures
- System testing
- Troubleshooting
- Application issues
- User-level parts replacement and many more valuable tips and tricks



cytiva.com/optiruntraining



Reduce the need for service calls

Many service events stem from end users lacking system experience and expertise.

Common knowledge gaps → Potential operational impacts

Basic cleaning practices	Prolonged downtime
Familiarity with components	Reliance on service calls
Routine maintenance	Increased risk of failure

Invest in training to lower long-term costs and risk

Equipment downtime can have financial implications because an expensive product might be lost and production benchmarks could be missed. The cost of unexpected service visits includes both the impact to a budget and the length of time your production is put on delay.

Proper and routine care is one of the best ways to prevent downtime that can cost your organization time, money, and resources. Attendees of this course learn basic best practices they can incorporate into their use of the equipment to reduce the risk of costly but avoidable system downtime.

Protect your production goals

How your bioprocess column is maintained can have an impact on your product and production schedule. Column components require simple but specific routine care and attention. Ensure that your operators know how to best maintain your systems.

Course codes: 29749727-AxiChrom Care and Troubleshooting training
29749728-BPG Care and Troubleshooting training



Training can streamline manufacturing operations.

- Maximize uptime and productivity
- Avoid and minimize downtime delays
- Help to manage risk

This course goes beyond the user manual to give users insight into how the components of their AxiChrom™ and BPG columns operate.

- Instructors with years of experience
- Combined lecture and hands-on segments
- Conveniently held at your facility for up to six attendees

cytiva.com/optiruntraining

Cytiva and the Drop logo are trademarks of Life Sciences IP Holdings Corporation or an affiliate doing business as Cytiva.

AxiChrom and OptiRun are trademarks of Global Life Sciences Solutions USA LLC or an affiliate doing business as Cytiva.

Any use of software may be subject to one or more end user license agreements, a copy of, or notice of which, are available on request.

© 2024 Cytiva.

For local office contact information, visit cytiva.com/contact

CY43767-03Jun24-FL

