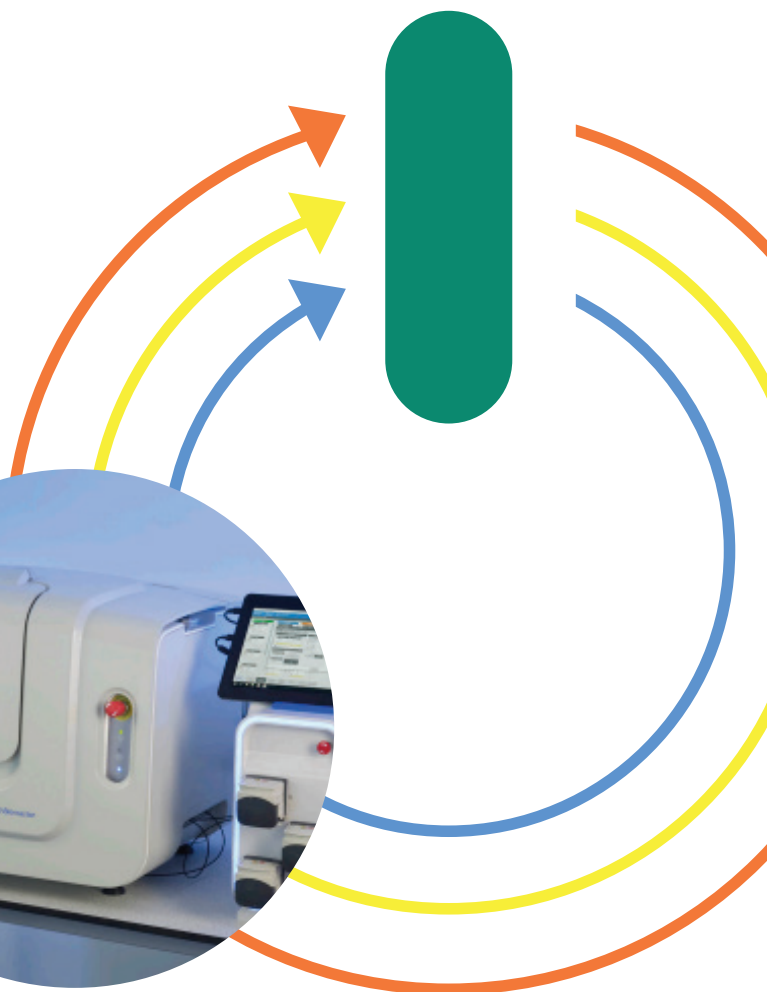
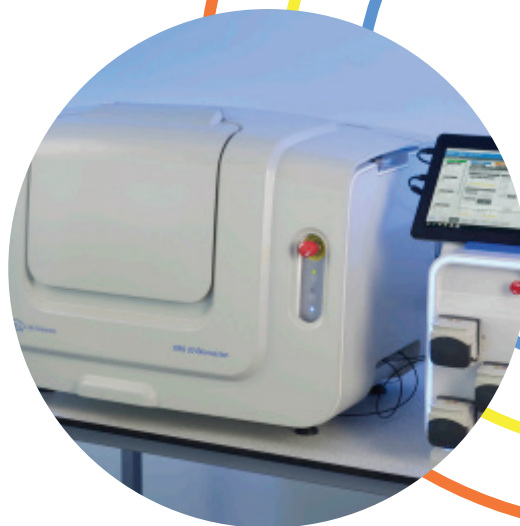


OptiRun™ Service solutions




Ensure optimal performance of your Allegro™ XRS 25 Bioreactor System with a preventive maintenance



We understand the criticality and importance of your bioproduction processes, which is why we built a world-class service team to maintain your complex equipment and keep it in prime condition to help you optimize your workflow productivity, protect your investment, and support you to stay compliant.

Regular preventive maintenance (PM) is critical to optimal outcomes and reduces the likelihood of unexpected breakdowns thus minimizing downtime, while maintaining schedule and product quality. Additionally, it minimizes unexpected costly failures, and ultimately prolongs your equipment's lifecycle.

Our service engineers are trained, certified, and experienced with deep knowledge and understanding to take complete care of your Allegro™ XRS 25 Bioreactor System.

-  **Extended lifecycle**
-  **Service traceability**
-  **Maximized productivity**

Cytiva PM supports your bioproduction needs.

Main components of PM

Outcomes you can expect from PM

Functional testing, inspections, and verification

Ensure reliable accuracy of testing data and system functionality

Wear-and-tear change

Minimize unexpected failure risk; extend the life of your equipment

As-found/as-left testing

Ensure evidence equipment runs according to specifications after completed PM

Documentation

Enable traceability with signed preventive maintenance service report upon completion of PM

Comprehensive testing and inspections

During preventive maintenance, our qualified engineers run necessary tests and verifications to keep your equipment to factory specifications and replace any necessary components using quality parts from Cytiva. These tests were designed and optimized throughout the development of the equipment and reflect functional tests performed during assembly, as well as quality tests performed prior to delivery to your site.

Comprehensive set of tests and inspections

System inspection	System inspection — exterior
Functionality verification	mPath™ control tower alarm system
	Temperature, Dissolved oxygene (DO) and PH
	Fluid control sub-system check
	Bioreactor agitation
	Motor lubrication
	Gas flow rate
	Control tower communications
Verification and adjustments	Load cells weight scales (x3)
	pH sensor
	Dissolved oxygene (DO) sensor
	Gas handling module (if required)

Quality parts replaced during PM

Parts replaced	mPath™ control tower air filter
-----------------------	---------------------------------

Documentation

Cytiva provides a standardized set of documentation and test results after the service or repair. This saves time, reduces costs, and supports compliance when working in a regulated environment. The service engineer documents each PM visit and provides a service report upon completion of the visit.

Standard recommended PM frequency for Allegro™ XRS 25 Bioreactor System

One preventive maintenance visit every year after warranty expiration.

PM, an integral part of our service agreements

To ensure the continued performance of your system, we build preventive maintenance into all our service agreements. Go to cytiva.com/service to learn more about our OptiRun™ service agreements.

cytiva.com

Cytiva and the Drop logo are trademarks of Life Sciences IP Holdings Corp. or an affiliate doing business as Cytiva.

OptiRun is a trademark of Global Life Sciences Solutions USA LLC or an affiliate doing business as Cytiva.

Allegro and mPath are trademarks of Pall Corporation. ® Indicates trademark registered in the USA. All other third-party trademarks are the property of their respective owners.

Any use of software may be subject to one or more end user license agreements, a copy of, or notice of which, are available on request.

©2023 Cytiva

For local office contact information, visit cytiva.com/contact

CY35814-27Apr23-FL

