



# UNICORN™ System Control Software

Quick installation guide



# Table of Contents

- 1 Installation overview ..... 3**
- 2 Full installation ..... 6**
  - 2.1 Step 1: Download UNICORN software package ..... 8
  - 2.2 Step 2: Install UNICORN software component ..... 10
  - 2.3 Step 3: Configure e-Licenses ..... 17
  - 2.4 Step 4: Configure IP ..... 23
  - 2.5 Step 5: Define a system ..... 29
- 3 Custom installation ..... 32**
  - 3.1 Step 1: Download UNICORN software package ..... 34
  - 3.2 Step 2: Install UNICORN Database ..... 36
  - 3.3 Step 3: Install Software Licensing Server ..... 45
  - 3.4 Step 4: Install UNICORN software ..... 54
  - 3.5 Step 5: Configure IP ..... 61
  - 3.6 Step 6: Define a system ..... 67
- 4 Troubleshooting ..... 68**

# 1 Installation overview

## About UNICORN

UNICORN™ system control software can be installed on a computer to control an ÄKTA™ chromatography system connected to that computer. The software has the following components. These components are installed one after another.

- UNICORN Database
- UNICORN Software
- Software Licensing Server

## Installation types

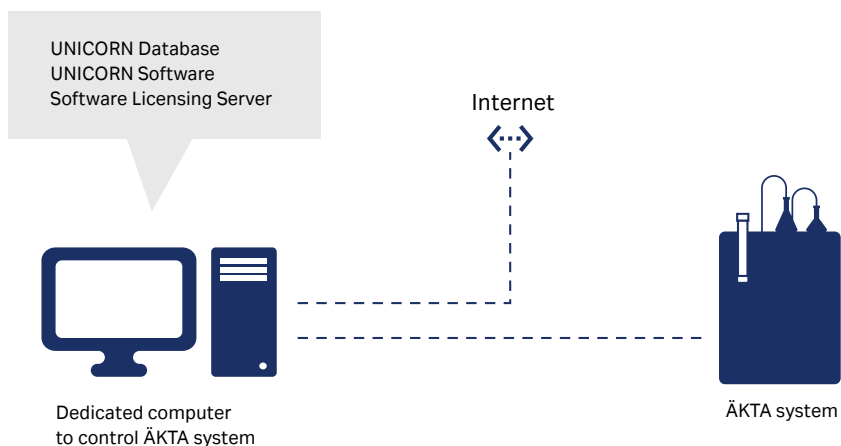
Depending on whether your computer is only connected to one ÄKTA system or connected to other computers controlling ÄKTA systems in a network, UNICORN software can be installed in the following ways:

- Full installation
- Custom installation



### IMPORTANT

If you need to connect your dedicated computer to the internet while connected to the ÄKTA system (see the illustration below), **you need two Network Interface Cards (NICs) installed in your dedicated computer.**



## General computer specifications

For information on computer specifications,

see <http://www.cytiva.com/UNICORNPCspecifications>.

For information about compatibility between UNICORN software versions, the supported operating systems, database versions, and instrument configuration, see the UNICORN software compatibility matrix at:

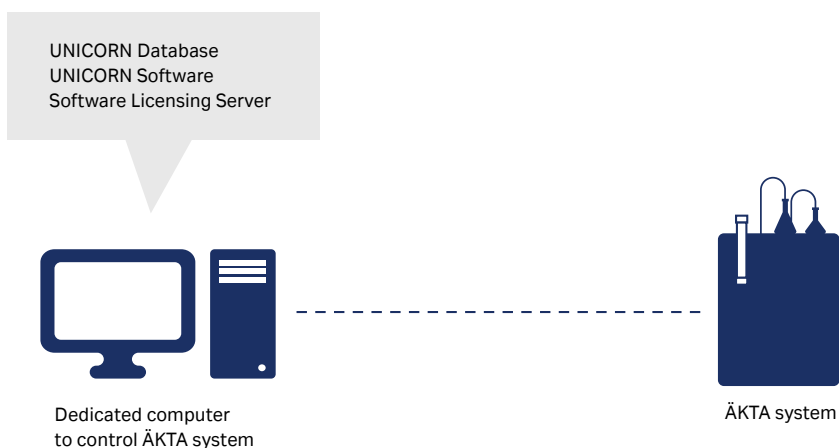
<http://www.cytiva.com/UNICORNcompatibility>.

The following applies:

- A screen resolution of 1280x1024 or higher is recommended. Parts of the UNICORN software user interface can not be displayed properly using a lower resolution.
- Changing the default font and changing the font size from 100% in Microsoft® Windows® can cause problems in the UNICORN software user interface.
- Windows 7 basic color scheme is recommended<sup>1</sup>.
- Using the Windows 7 Aero color scheme is not recommended.
- Windows power save features must be turned off to avoid conflicts with system operations.
- UNICORN software is not compatible with the Windows feature High DPI Awareness, which allows the graphic user interface to be scaled. The interface scale must remain at 100% to avoid issues with clipping and misaligning of parts of the UNICORN software user interface. Normally, the scale is set at 100% by default.

## Full installation overview

When you have only one ÄKTA system, select the **Full installation** option. All the UNICORN software components are installed in the dedicated computer, see the following illustration.



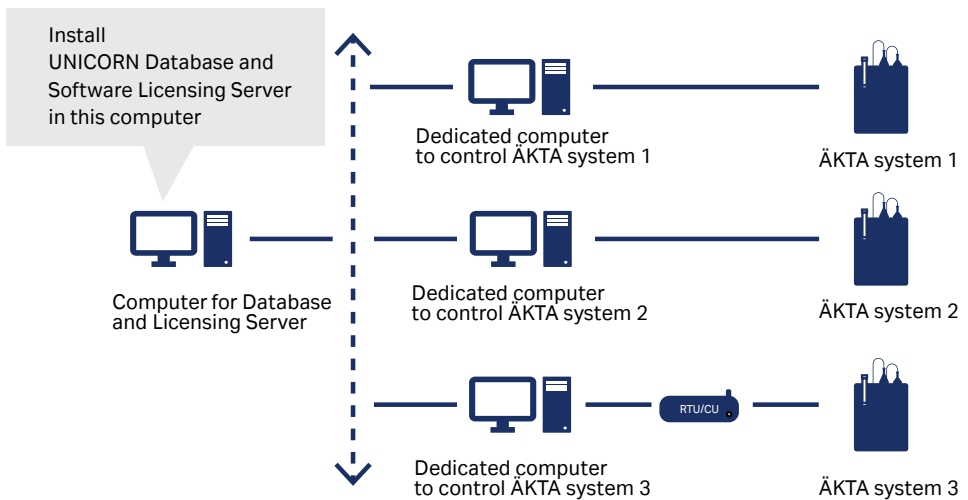
<sup>1</sup> UNICORN software must be closed when the color scheme is changed.

## Custom installation overview

Select the **Custom installation** option when you have:

- **several ÄKTA systems,**
- all the dedicated computers connected to your company internet, and
- an additional computer connected to the company internet. This computer is where the **UNICORN software Database and Software Licensing Server** will be installed.

**Note:** You may choose to install the **UNICORN Database** on one computer and the **License Server** on another.



## 2 Full installation



### IMPORTANT

You need an **Activation ID** to download the UNICORN software installation package and to retrieve an e-License from the Cytiva software e-Licensing web site. The activation ID together with the information on the software is sent via e-mail. Contact the Cytiva representative if the activation ID is not received.

**Internet connection is needed to download** the UNICORN software installation package and to retrieve the e-License.

UNICORN Database  
UNICORN Software  
Software Licensing Server



Dedicated computer  
to control ÄKTA system



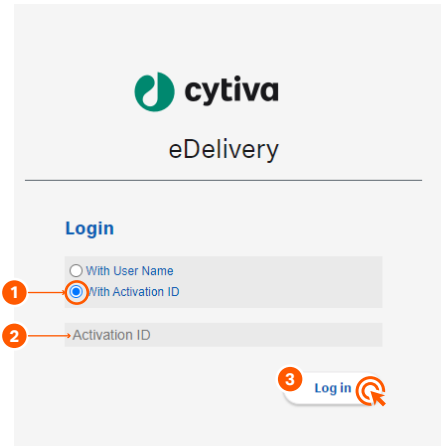
ÄKTA system

## In this chapter

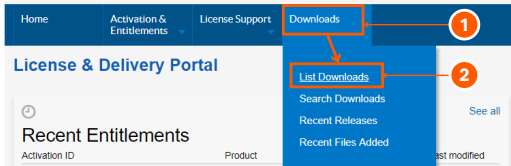
| Section |  | See page |
|---------|--|----------|
| 2.1     | Step 1: Download UNICORN software package  | 8        |
| 2.2     | Step 2: Install UNICORN software component | 10       |
| 2.3     | Step 3: Configure e-Licenses               | 17       |
| 2.4     | Step 4: Configure IP                       | 23       |
| 2.5     | Step 5: Define a system                    | 29       |

2.1 Step 1: Download UNICORN software package

| Step | Action   |
|------|--|
| 1    | Enter the following address: <a href="http://www.cytiva.com/eDelivery">http://www.cytiva.com/eDelivery</a> |
| 2    | Follow the steps in the following illustration to log in:  |



|   |   |
|---|---|
| 3 | Follow the direction in the following illustration: |
|---|---|



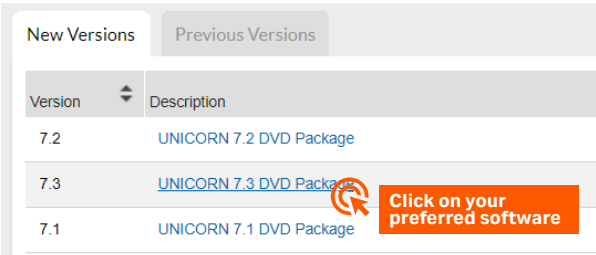
|   |                         |
|---|-------------------------|
| 4 | Enter the UNICORN page. |
|---|-------------------------|



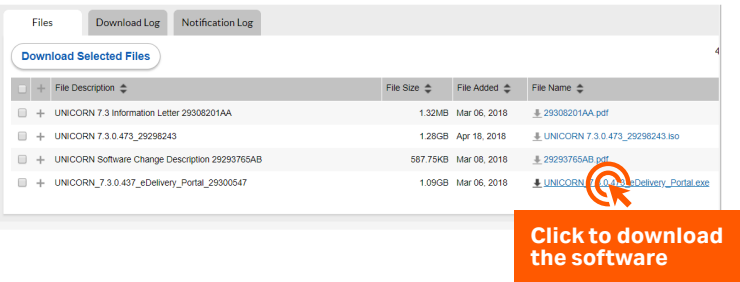


| Step | Action |
|------|--------|
|------|--------|

5 Select a software version.



6 Download the software.





The software package will be downloaded in **Downloads** folder.

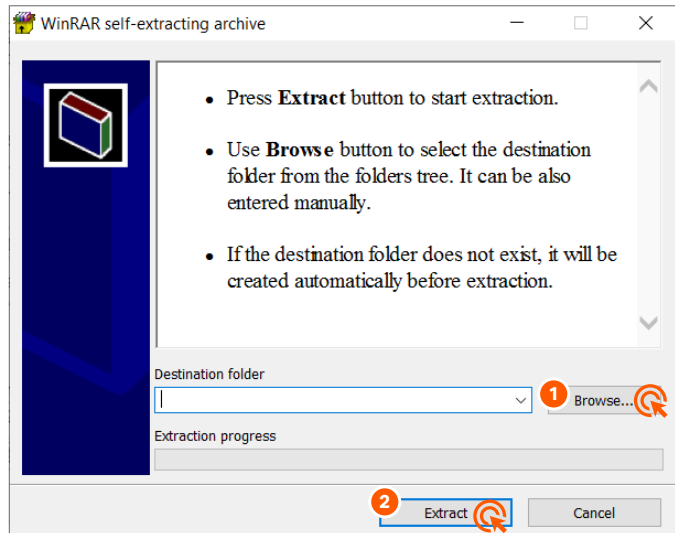
7 Do **Step 2: Install UNICORN software component**

## 2.2 Step 2: Install UNICORN software component

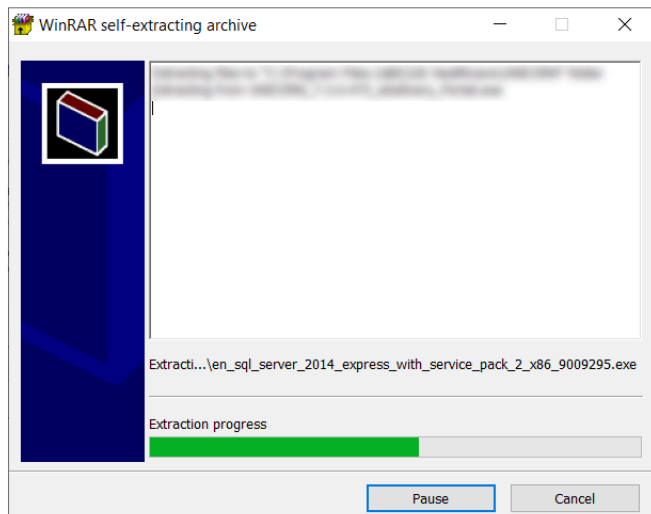
It is assumed that you have downloaded the UNICORN software installation package in the computer where UNICORN software will be installed.

| Step | Action  |
|------|---|
| 1    | <p>In the computer where the UNICORN software installation package is downloaded, locate the downloaded installation package.</p> <div><p><b>IMPORTANT</b><br/>Generally, the installation package is downloaded in the <b>Downloads</b> folder. Move the installation package to <b>C:</b> drive.</p></div>   |
| 2    | <p>Double-click the <b>UNICORN_7.x.x.xxx_eDelivery_Portal.exe</b> file.</p> <div><p><b>IMPORTANT</b><br/>It can take <b>several minutes</b> for the extraction. If you are installing UNICORN software 7.3 or earlier release, follow <b>step 3 and 4</b>. For later releases, go to <b>step 4</b>.<br/>If the <b>Open File - Security Warning</b> window appears, click <b>Run</b>.</p></div> |

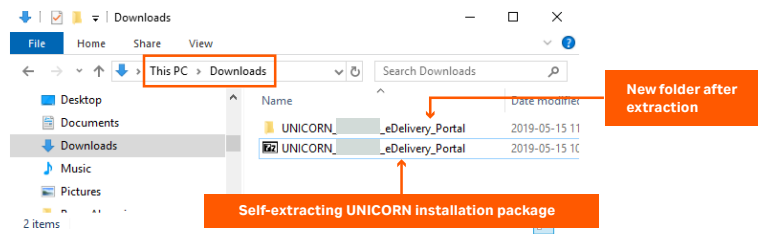
| Step | Action   |
|------|--|
| 3    | If you are installing UNICORN software 7.3 or earlier release, follow the steps in the illustration below. |



**Please wait** for the extraction to finish.

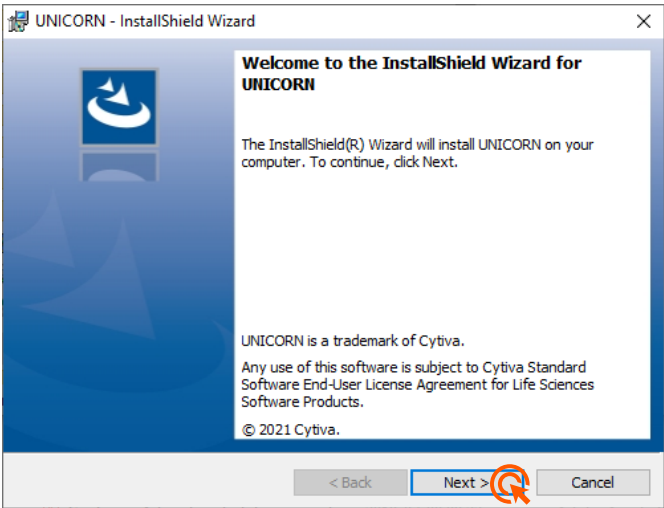


| Step | Action  |
|------|---|
| 4    | If you are installing UNICORN software 7.4 or later releases, the self-extracting function creates a folder with same name as the downloaded file at the same location. |



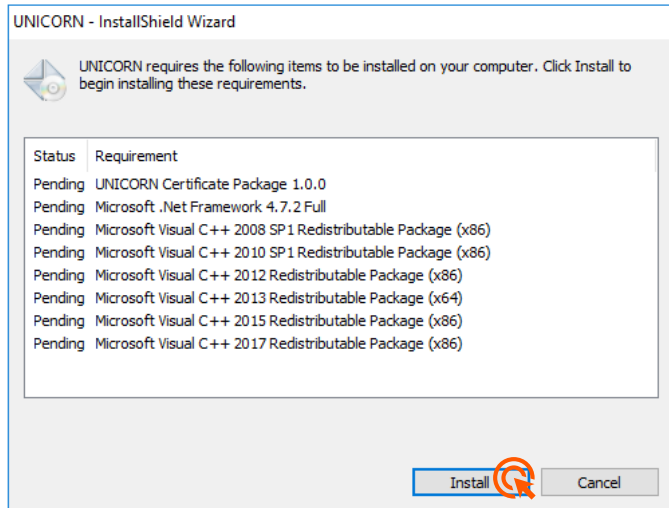
Double-click the **UNICORN\_7.x.x.xxx\_eDelivery\_Portal** folder.

- 5 Double-click **Setup.exe**.  
If the **Open File - Security Warning** window appears, click **Run**.
- 6 Click **Next**.

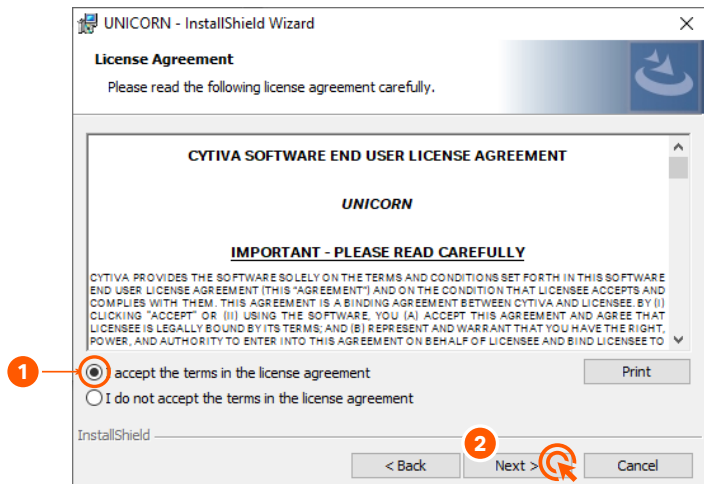


| Step | Action |
|------|--------|
|------|--------|

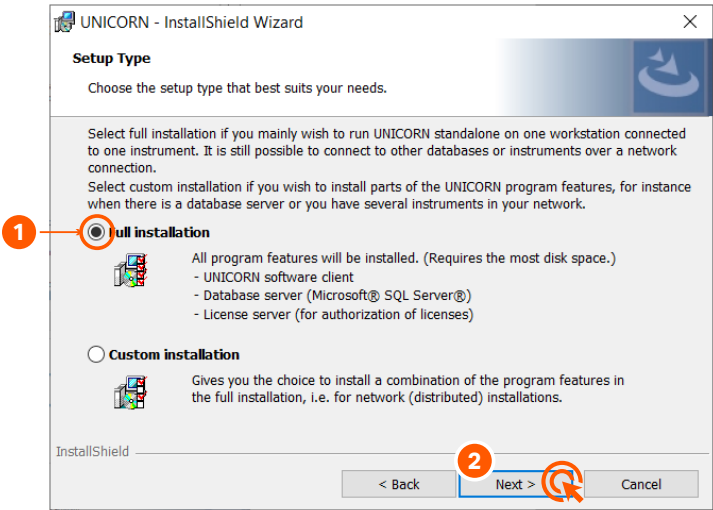
- |   |  |
|---|--|
| 7 | If your computer is <b>missing any software requirements</b> , the installer will install them. The computer can <b>restart</b> several times. After restart, double-click the <b>Setup.exe</b> again, see <b>step 5</b> . |
|---|--|



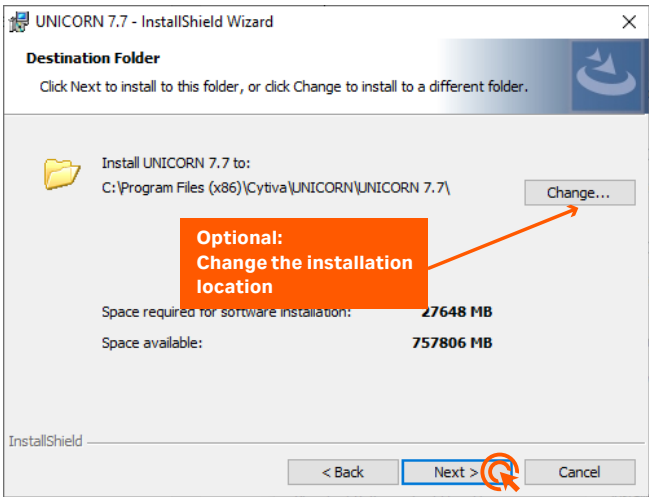
- |   |                               |
|---|-------------------------------|
| 8 | Accept the license agreement. |
|---|-------------------------------|



| Step | Action                        |
|------|-------------------------------|
| 9    | Select the installation type. |

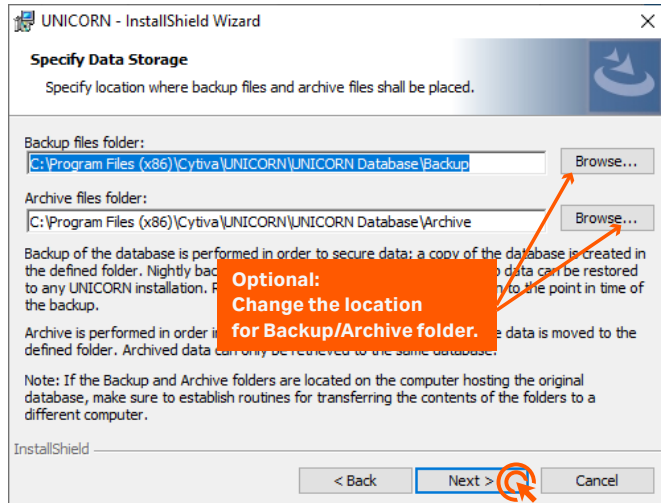


|    |                     |
|----|---------------------|
| 10 | Click <b>Next</b> . |
|----|---------------------|

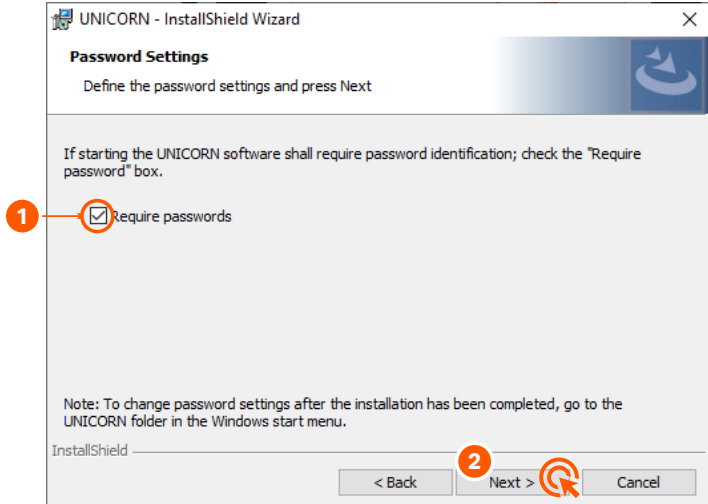


| Step | Action |
|------|--------|
|------|--------|

|    |                     |
|----|---------------------|
| 11 | Click <b>Next</b> . |
|----|---------------------|



|    |  |
|----|--|
| 12 | Select <b>Require password</b> (optional). |
|----|--|



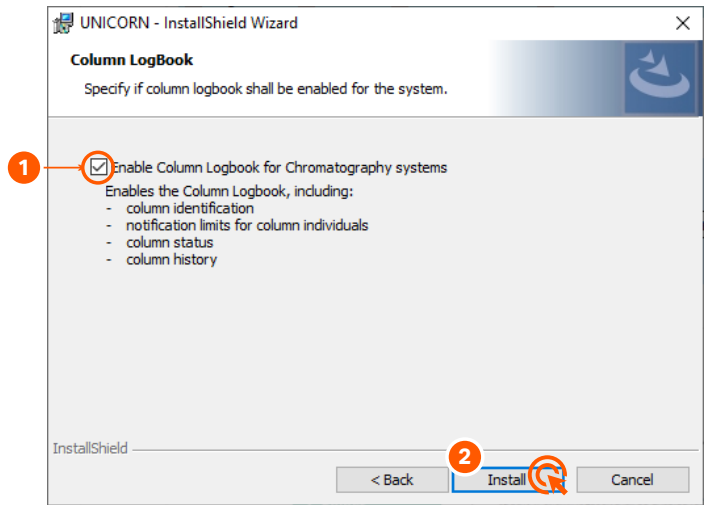
|    |  |
|----|--|
| 13 |  |
|----|--|

**IMPORTANT**

Enable **Column Logbook** only if you have **license** for it.

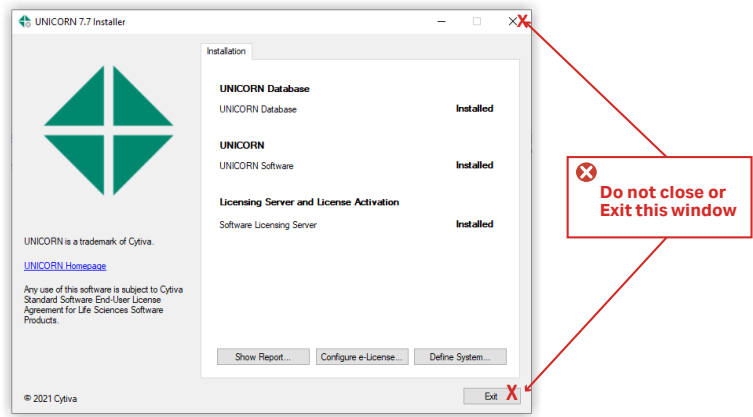
**Step      Action**

Select **Column Logbook** and then click **Install**.



**Please wait .....** this can take several minutes.

If the following window appears, the first step for the installation is complete

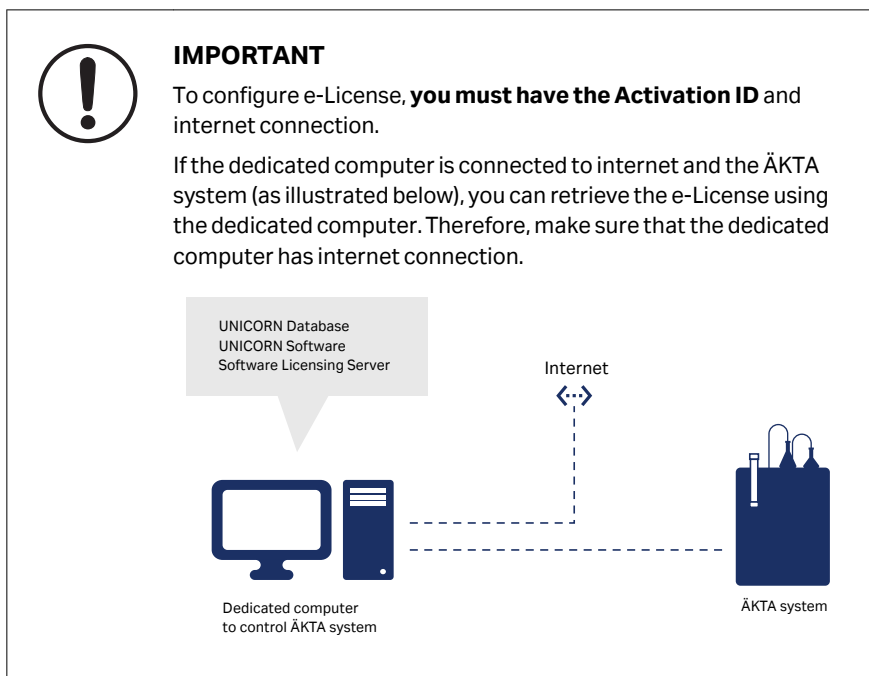


**IMPORTANT**  
**Do not close the UNICORN Installer window** (see the illustration above). If you accidentally close it, perform step 4 of this procedure again.

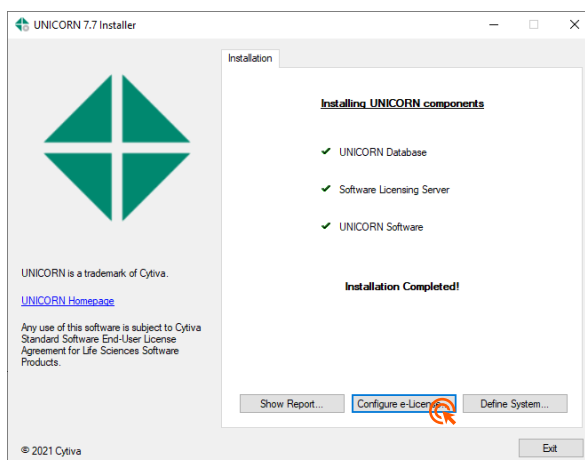
14      Do **Step 3: Configure e-Licenses**.



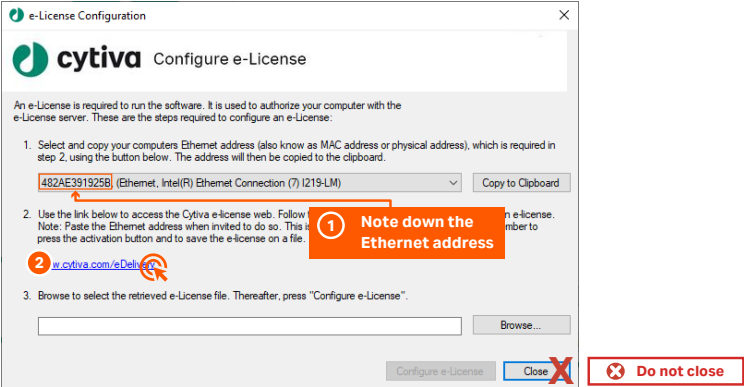
## 2.3 Step 3: Configure e-Licenses



| Step | Action   |
|------|--|
| 1    | Open the <b>Configuration e-License</b> window as shown below. |

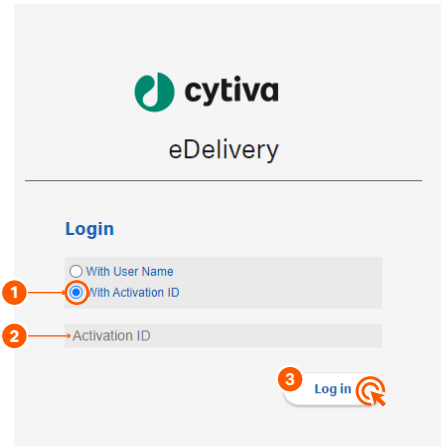


| Step | Action  |
|------|---|
| 2    | Follow the steps in the following illustration to configure an e-License: |



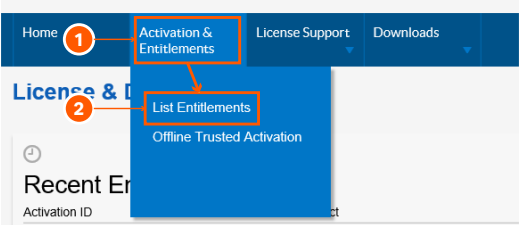
**IMPORTANT**  
The Ethernet address stated in the illustration above is **an example**. Note down the Ethernet address that appears **on your computer screen**.

|   |   |
|---|---|
| 3 | Follow the steps in the following illustration to log in: |
|---|---|

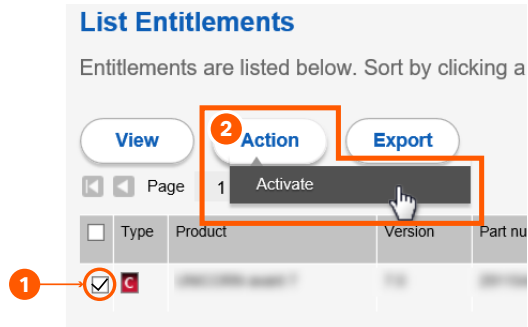


**Step      Action**

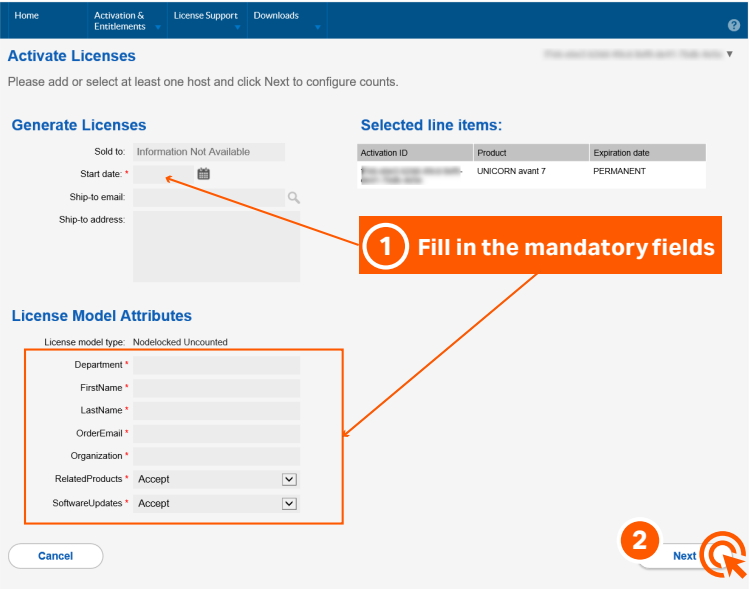
4 Follow the direction in the following illustration:



5 Follow the steps in the following illustration:



6 Follow the steps in the following illustration:



Step Action

7 Follow the steps in the following illustration:

**Configure Hosts**

Please enter values for the hosts and click Verify to validate the license. Or click Generate to generate the license.

**Configure Hosts**

Server hosts: (no license hosts selected)

**Selected line items:**

| Activation ID | Product         | Expiration date |
|---------------|-----------------|-----------------|
| ...           | UNICORN avant 7 | PERMANENT       |

**Create License Host**

Please select a license host type and enter an appropriate value.

Nodelocked hosts: ETHERNET =

**Configure Hosts**

Server hosts: A4C3F0B51775

**License details:**

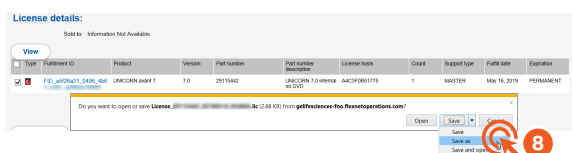
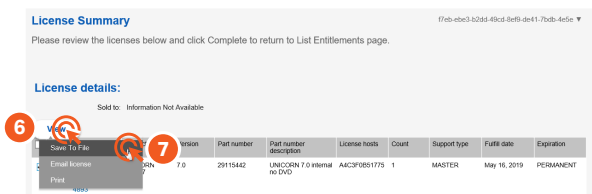
Sold to: Information Not Available

**View**

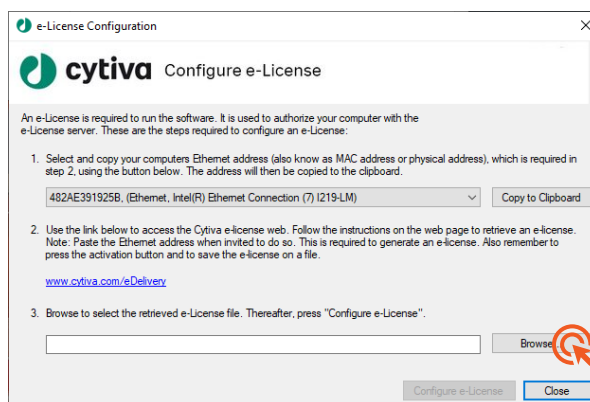
| Type                                | Fulfillment ID                           | Product         | Version | Part number | Part number description     | License hosts | Co |
|-------------------------------------|--|-----------------|---------|-------------|-----------------------------|---------------|----|
| <input checked="" type="checkbox"/> | FID_a5f26a31_04f9_4b64_b43c_ab984e1f4893 | UNICORN avant 7 | 7.0     | 29115442    | UNICORN 7.0 internal no DVD | A4C3F0B51775  | 1  |

| Step | Action |
|------|--------|
|------|--------|

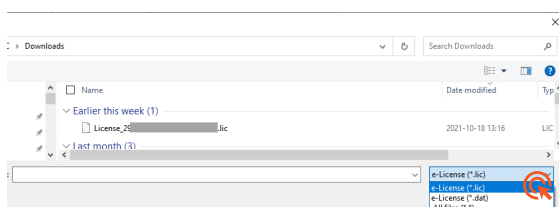
8 Continue following the steps:



9 Go back to the **e-License Configuration** window and click **Browse**.



10 Browse to the e-License location.



Locate the license file.  
If the license is not visible,  
click and select e-License (\*.lic)

## 2.3 Step 3: Configure e-Licenses

[illegible]

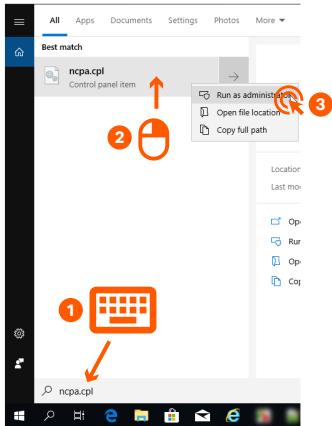
## 2.4 Step 4: Configure IP

| Step | Action  |
|------|---|
| 1    | Make sure that your dedicated computer is connected to internet and to the ÄKTA system. |
| 2    | Click the Windows search icon.  |



Step      Action

3      Enter ***ncpa.cpl*** in the **search box**, and then press **Enter**.

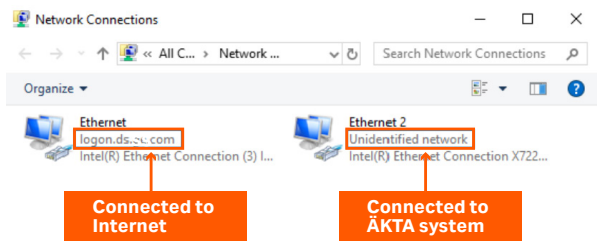


**Note:**  
For **Windows 7** user, Click **Start**, enter ***ncpa.cpl*** in the **search box**, and then press **Enter**.



**IMPORTANT**

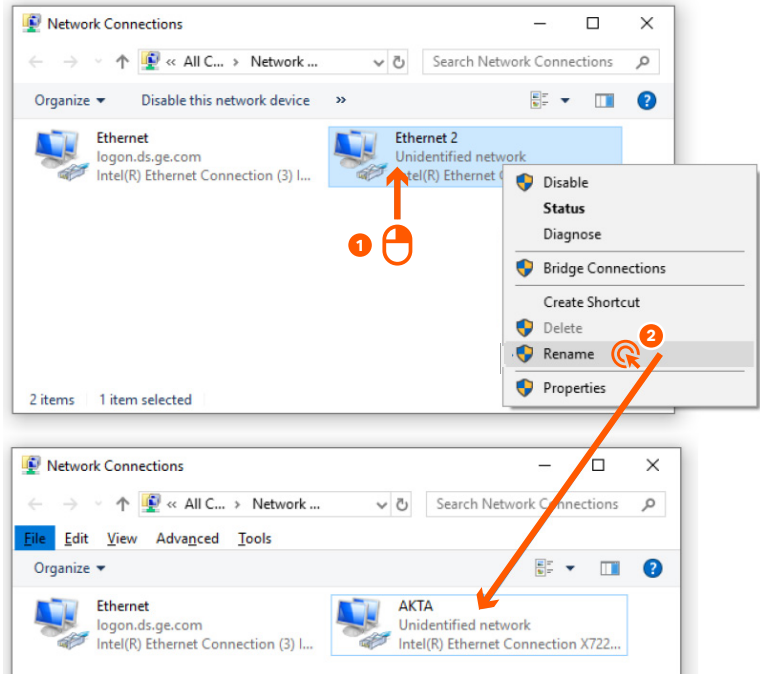
If you have two Ethernet cards, one Ethernet card is connected to internet (**Ethernet in the illustration below**) and the other (**Ethernet 2 in the illustration below**) is connected to the ÄKTA system. Generally, the Ethernet card connected to the internet has the company domain name. For example, in the illustration below, it is **logon.ds...com**. Ethernet card connected to the ÄKTA system generally states **Unidentified network** as seen in the illustration below.



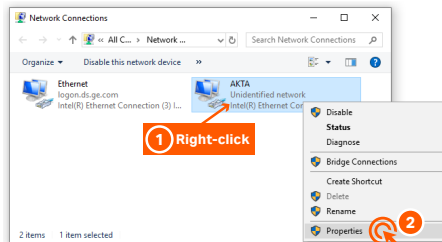


| Step | Action |
|------|--------|
|------|--------|

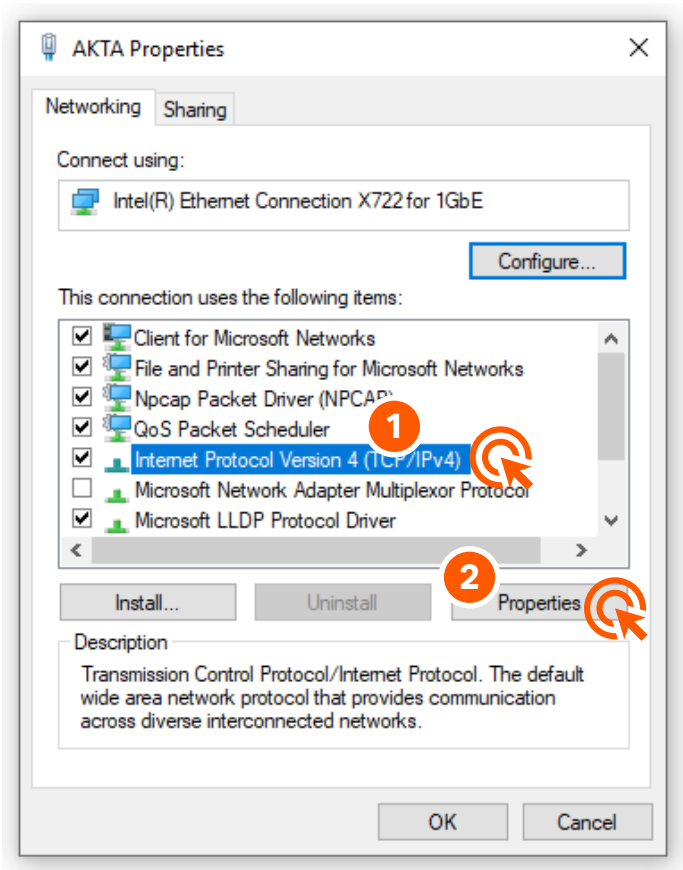
- |   |  |
|---|--|
| 4 | Rename the <b>Ethernet 2</b> connection to <b>AKTA</b> . |
|---|--|



- |   |   |
|---|---|
| 5 | Access the <b>Properties</b> window of the AKTA network connection. |
|---|---|

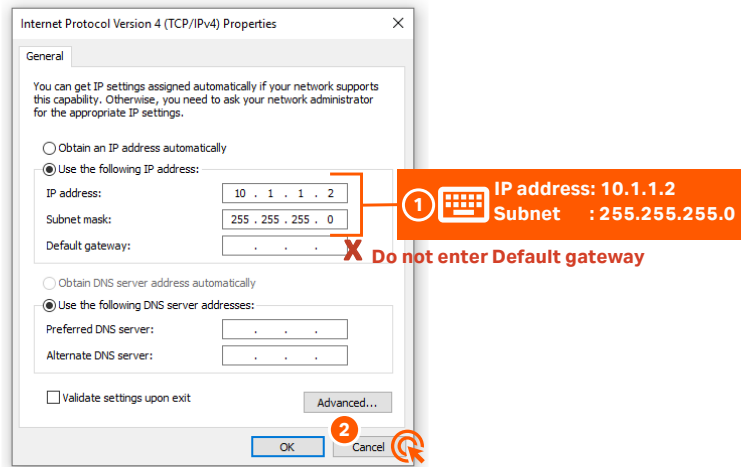


| Step | Action                                      |
|------|---|
| 6    | Select <b>Internet Protocol Version 4</b> . |

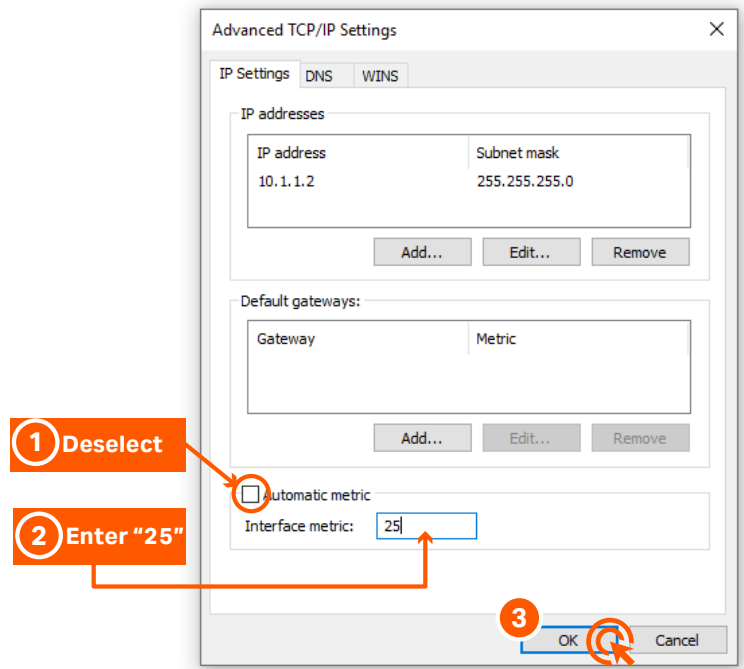


| Step | Action |
|------|--------|
|------|--------|

- |   |  |
|---|--|
| 7 | Enter the <b>IP address</b> and the <b>Subnet mask</b> as shown in the following illustration: |
|---|--|



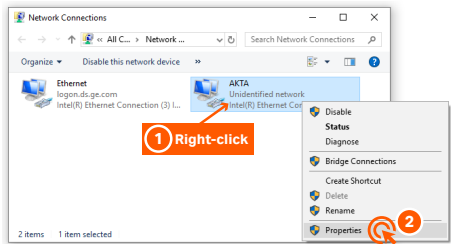
- |   |  |
|---|--|
| 8 | Apply the advanced TCP/IP settings as shown in the following illustration: |
|---|--|



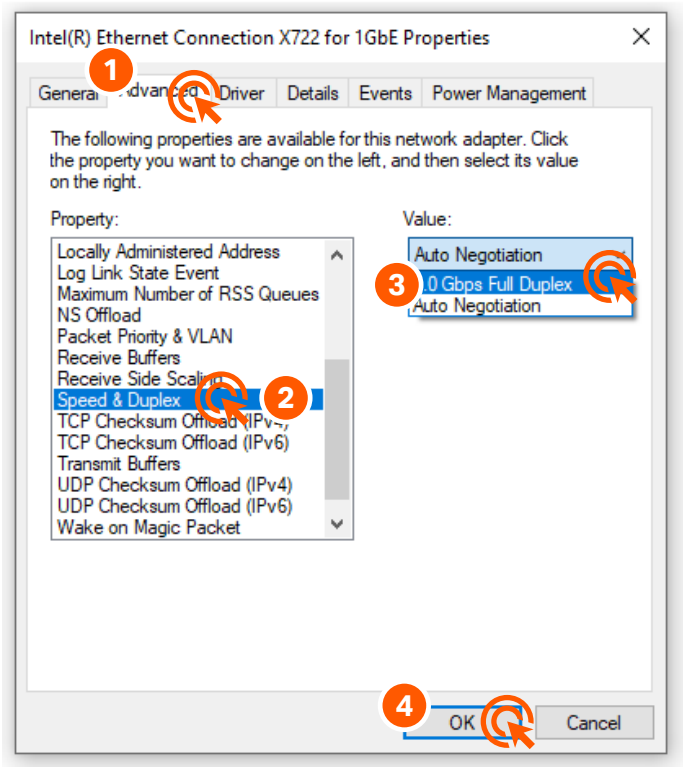
- |   |   |
|---|---|
| 9 | Click <b>OK</b> or <b>Close</b> in all the open dialog boxes. |
|---|---|

**Step      Action**

10      Access the **Properties** window of the ÄKTA network connection.



11      Select the **Speed & Duplex** property and its intended value as shown in the following illustration:



**Note:**  
For ÄKTA avant, ÄKTA pure™, ÄKTA go™, ÄKTA pilot 600 etc., set **Speed & Duplex** to **Auto Negotiation** or at least **100Mb Full Duplex**.  
For a CU based system (ÄKTA, Espresso etc), set to **10mbps Half Duplex**.

12      Perform **Step 5: Define a system**.

## 2.5 Step 5: Define a system



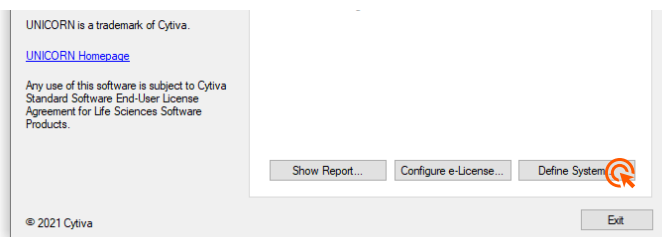
### IMPORTANT

You need an **Instrument Configuration (IC)** to define your system.

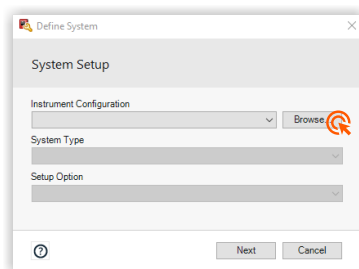
The latest IC can be downloaded from the product page of your system. Go to <http://www.cytiva.com/akta>, search for your ÄKTA system on the page. The IC can be found under **RELATED DOCUMENTS → SOFTWARE** on your ÄKTA system web page.

| Step | Action |
|------|--------|
|------|--------|

- |   |                                       |
|---|---------------------------------------|
| 1 | Open the <b>Define System</b> window. |
|---|---------------------------------------|



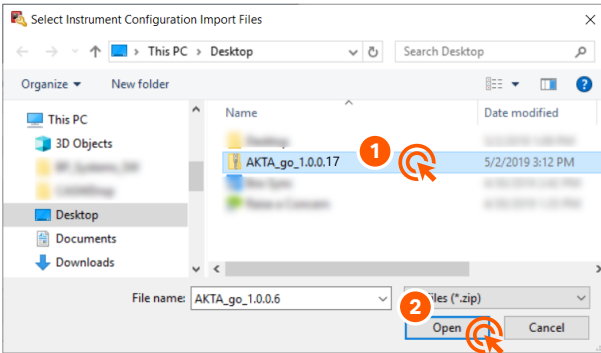
- |   |  |
|---|--|
| 2 | Browse to the Instrument Configuration location. |
|---|--|



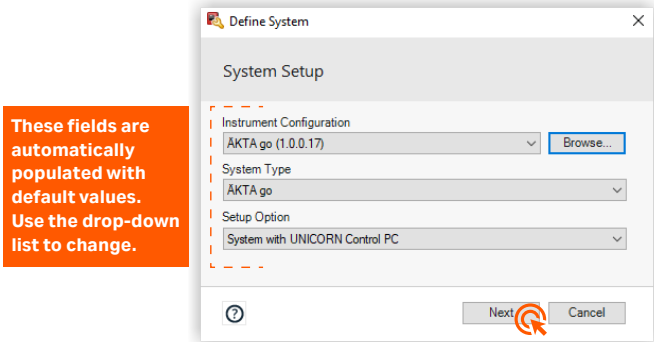
Click and browse to the location where the Instrument Configuration is downloaded and unpacked.

**Step      Action**

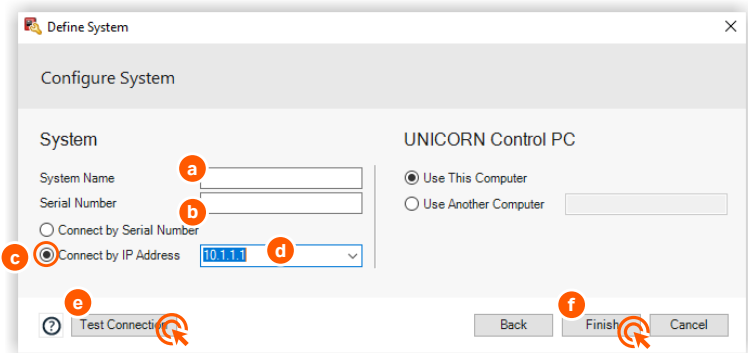
3      Open the Instrument Configuration file.



4      Select the system setup options.



5      Do the steps to configure the system:



- a. Enter your preferred system name. This name cannot be changed later.
- b. Enter your ÄKTA serial number. The number can be found on sticker at the back of the system.

| Step | Action   |
|------|--|
|      | <ul style="list-style-type: none"><li>c. Select <b>Connect by IP Address</b> option.</li><li>d. Enter the IP address.</li><li>e. Click <b>Test Connection</b>, and if the connection is successful,</li><li>f. Click Finish.</li></ul> |
| 6    | <p>When you successfully have defined your system, you can close the <b>Define System</b> dialog.</p> <p><b>Now the ÄKTA system is ready for use.</b></p>  |

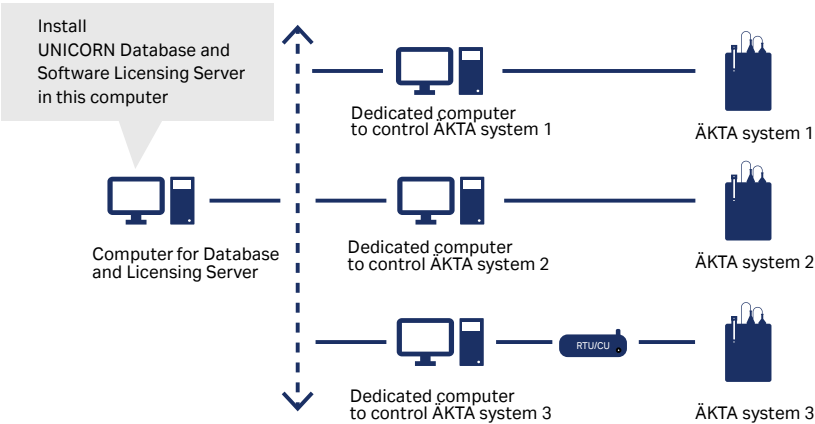
# 3 Custom installation



**IMPORTANT**

You need an **Activation ID** to download the UNICORN software installation package and to retrieve an e-License from the Cytiva software e-Licensing web site. The activation ID together with the information on the software is sent via e-mail. Contact the Cytiva representative if the activation ID is not received.

**To download** the UNICORN software installation package and to retrieve the e-License, **internet connection** is needed.





## In this chapter

| Section |   | See page |
|---------|---|----------|
| 3.1     | Step 1: Download UNICORN software package | 34       |
| 3.2     | Step 2: Install UNICORN Database          | 36       |
| 3.3     | Step 3: Install Software Licensing Server | 45       |
| 3.4     | Step 4: Install UNICORN software          | 54       |
| 3.5     | Step 5: Configure IP                      | 61       |
| 3.6     | Step 6: Define a system                   | 67       |

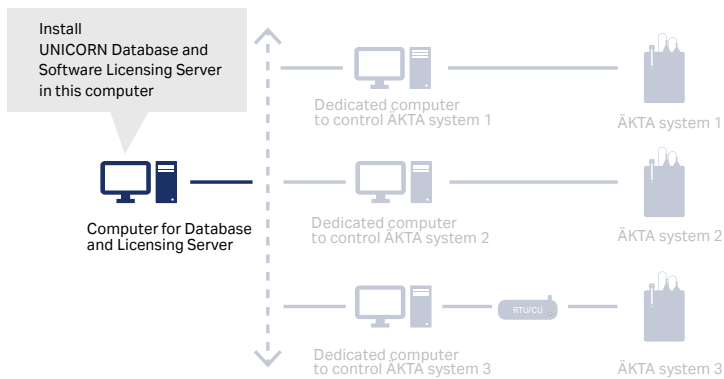
### 3.1 Step 1: Download UNICORN software package



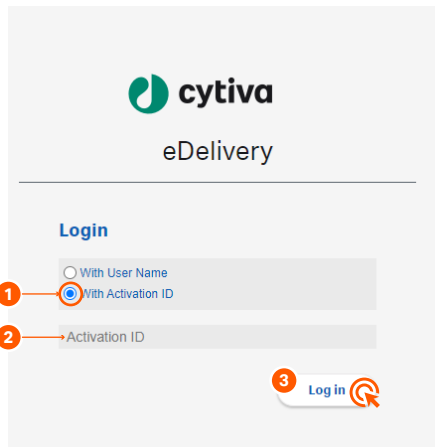
**IMPORTANT**

Make sure that all the Windows updates are done. Otherwise, the computer might start installing Windows updates during UNICORN software installation and significantly delay the installation process.

| Step | Action   |
|------|--|
| 1    | In the computer where <b>UNICORN software Database</b> and <b>Software Licensing server</b> will be installed, open any web browser. |

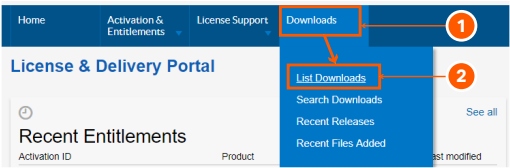


- 2 Enter the following address: <http://www.cytiva.com/eDelivery>
- 3 Follow the steps in the following illustration to log in:



| Step | Action |
|------|--------|
|------|--------|

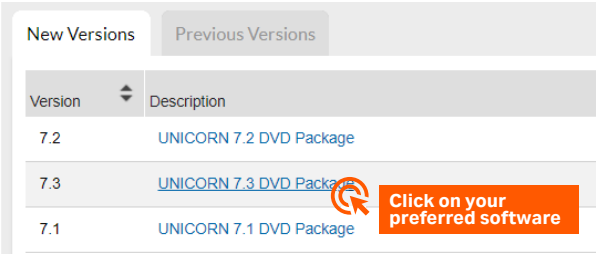
|   |   |
|---|---|
| 4 | Follow the direction in the following illustration: |
|---|---|



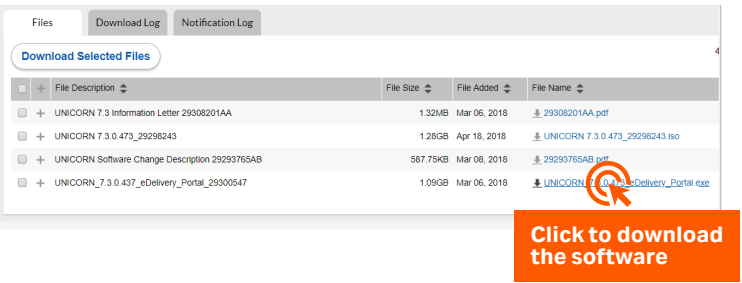
|   |                         |
|---|-------------------------|
| 5 | Enter the UNICORN page. |
|---|-------------------------|



|   |                            |
|---|----------------------------|
| 6 | Select a software version. |
|---|----------------------------|



|   |                        |
|---|------------------------|
| 7 | Download the software. |
|---|------------------------|





The software package will be downloaded in **Downloads** folder.

|   |   |
|---|---|
| 8 | Do <b>Step 2: Install UNICORN Database.</b> |
|---|---|

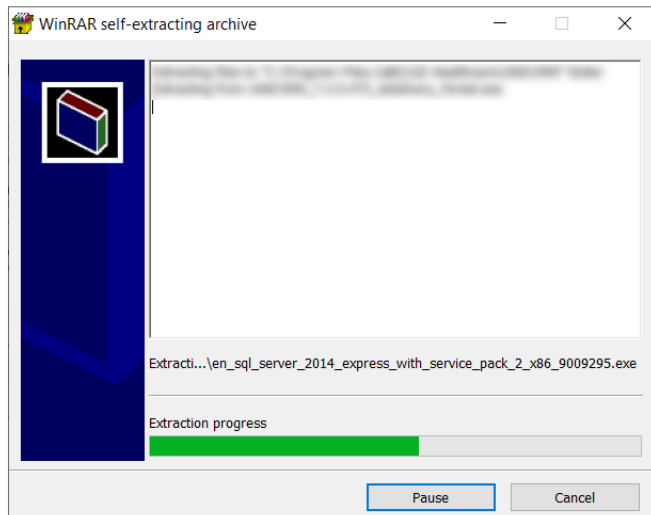
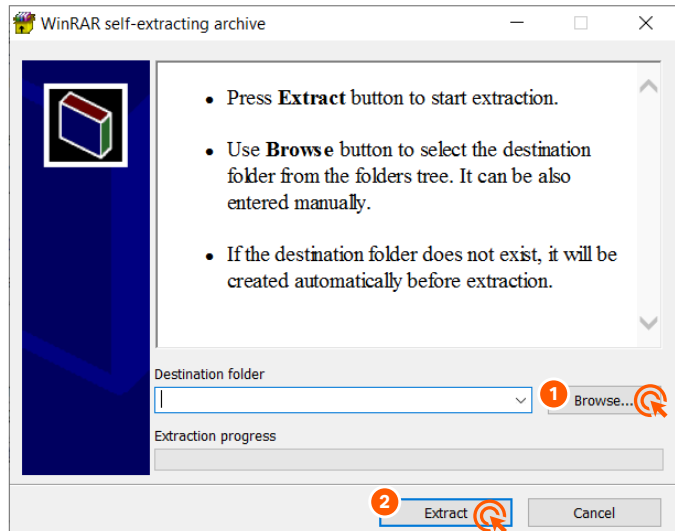
## 3.2 Step 2: Install UNICORN Database

It is assumed that you have downloaded the UNICORN software installation package in the computer where UNICORN software will be installed.

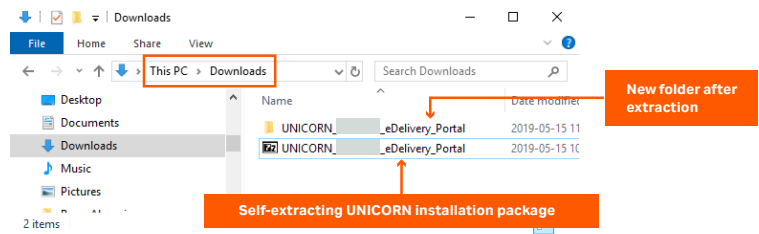
| Step | Action  |
|------|---|
| 1    | <p>In the computer where the UNICORN software installation package is downloaded, locate the downloaded installation package.</p> <div><p><b>IMPORTANT</b><br/>Generally, the installation package is downloaded in the <b>Downloads</b> folder. Move the installation package to <b>C:</b> drive.</p></div>   |
| 2    | <p>Double-click the <b>UNICORN_7.x.x.xxx_eDelivery_Portal.exe</b> file.</p> <div><p><b>IMPORTANT</b><br/>It can take <b>several minutes</b> for the extraction. If you are installing UNICORN software 7.3 or earlier release, follow <b>step 3 and 4</b>. For later releases, go to <b>step 4</b>.<br/>If the <b>Open File - Security Warning</b> window appears, click <b>Run</b>.</p></div> |

| Step | Action |
|------|--------|
|------|--------|

- |   |  |
|---|--|
| 3 | If you are installing UNICORN software 7.3 or earlier release, follow the steps in the illustration below. |
|---|--|



| Step | Action  |
|------|---|
| 4    | If you are installing UNICORN software 7.4 or later releases, the self-extracting function creates a folder with same name as the downloaded file at the same location. |



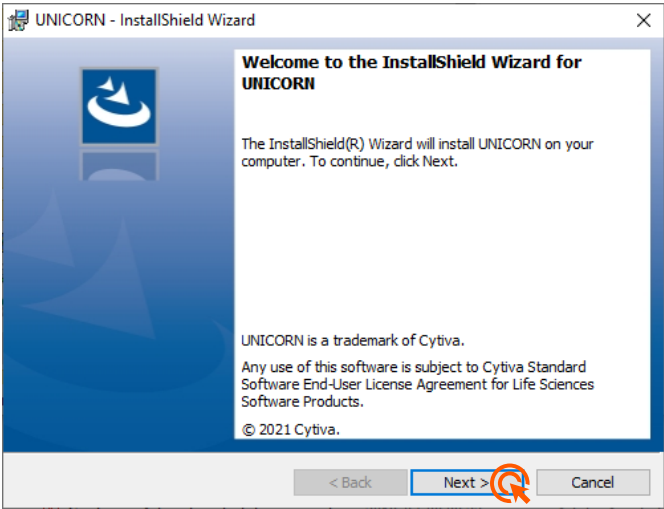
Double-click the **UNICORN\_7.x.x.xxx\_eDelivery\_Portal** folder.



**IMPORTANT**

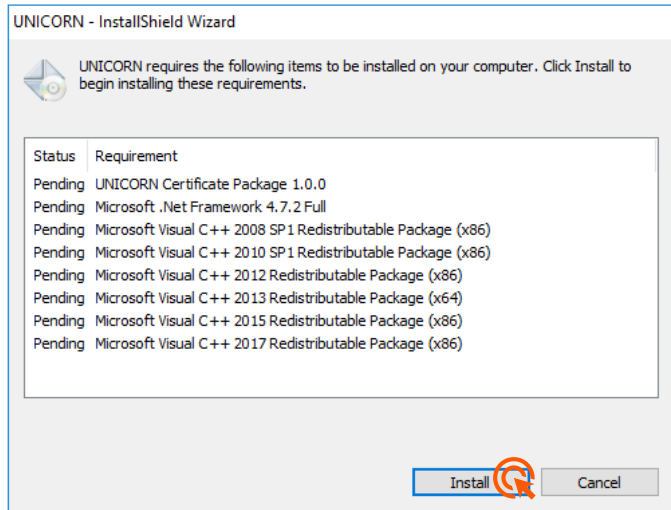
If your organization allows you to use **USB memory stick**, copy the extracted installation package into a **USB memory stick** to simplify the installation process. **Otherwise**, make sure that the extracted files are accessible from all the related computers for this installation.

- 5 Double-click **Setup.exe**. If the **Open File - Security Warning** window appears, click **Run**.
- 6 Click **Next**.

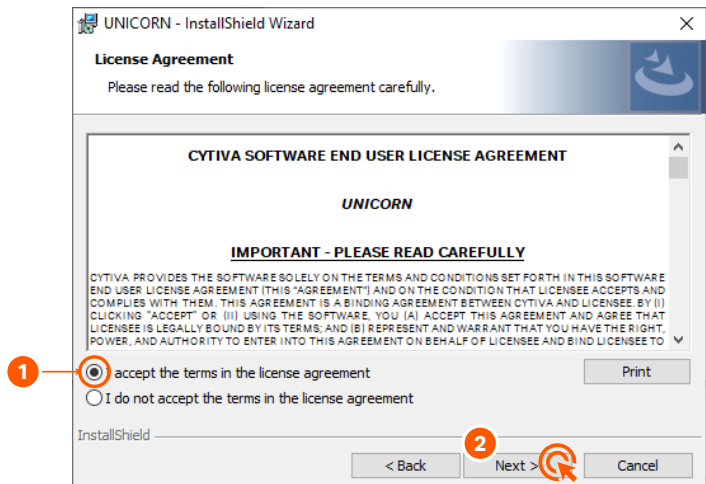


| Step | Action |
|------|--------|
|------|--------|

- |   |  |
|---|--|
| 7 | If your computer is <b>missing any software requirements</b> , the installer will install them. The computer can <b>restart</b> several times. After restart, double-click the <b>Setup.exe</b> again, see <b>step 5</b> . |
|---|--|

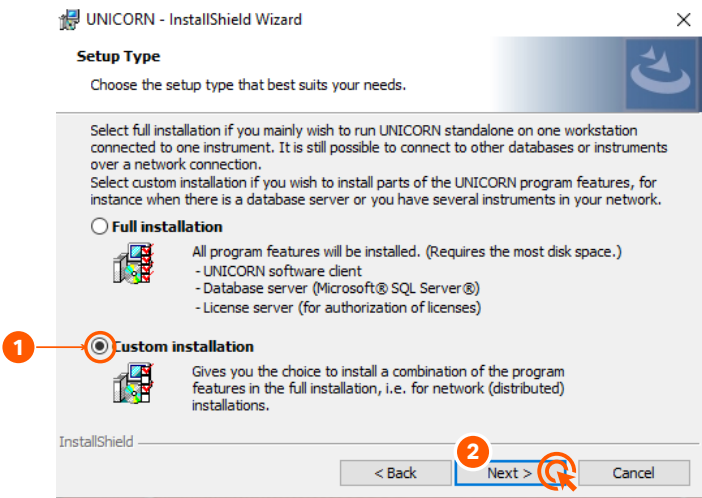


- |   |                               |
|---|-------------------------------|
| 8 | Accept the license agreement. |
|---|-------------------------------|

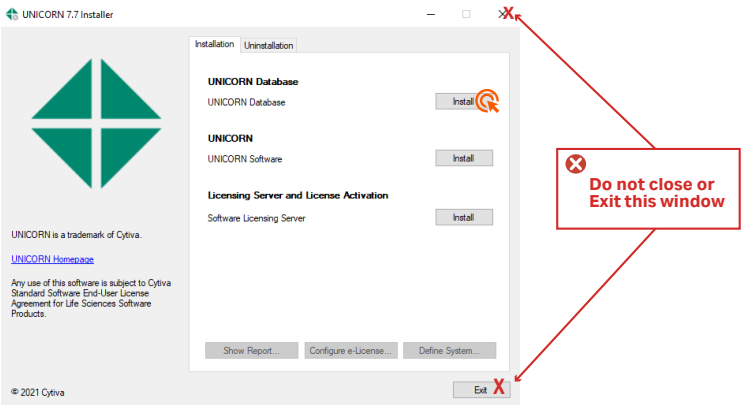


| Step | Action |
|------|--------|
|------|--------|

9 Select the installation type.



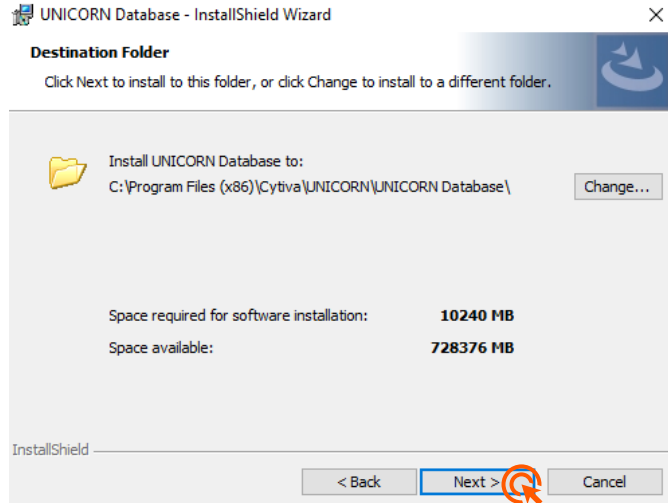
10 Click **Install** next to **UNICORN Database**.



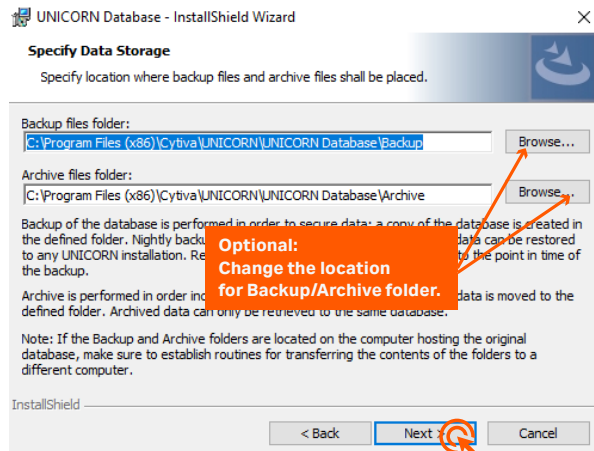


| Step | Action |
|------|--------|
|------|--------|

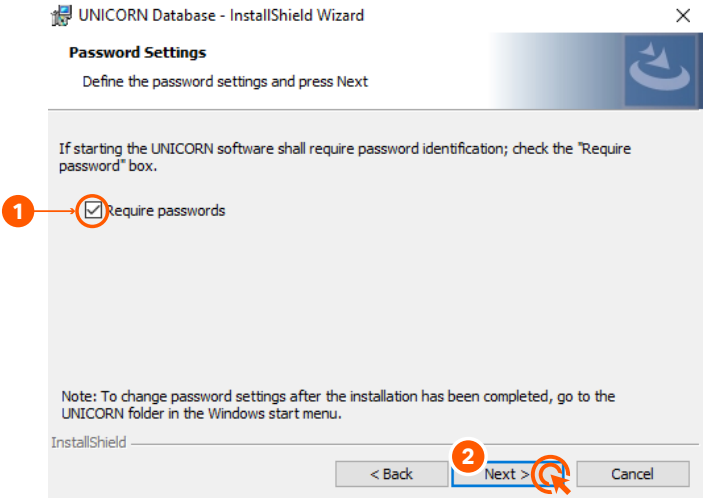
|    |                     |
|----|---------------------|
| 11 | Click <b>Next</b> . |
|----|---------------------|



|    |                     |
|----|---------------------|
| 12 | Click <b>Next</b> . |
|----|---------------------|



| Step | Action                                     |
|------|--|
| 13   | Select <b>Require password</b> (optional). |

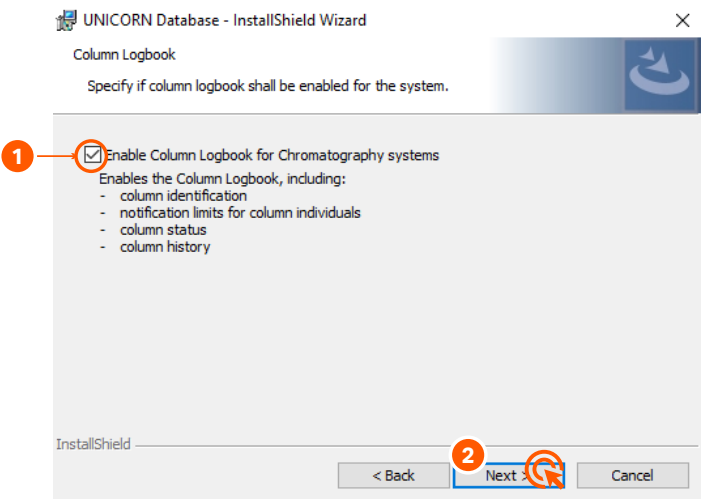


14



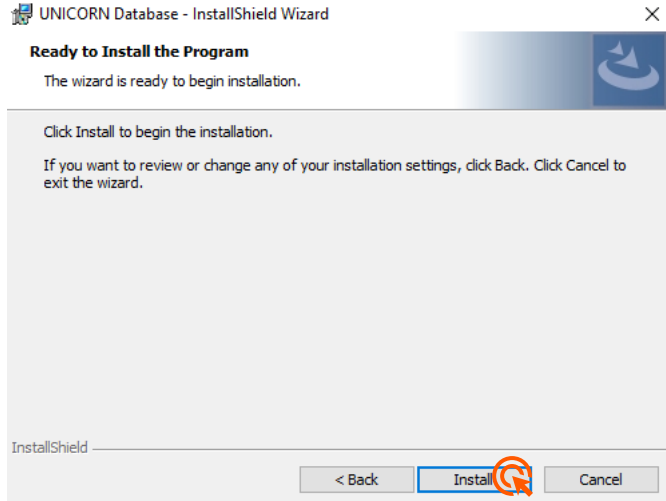
**IMPORTANT**  
Enable **Column Logbook** only if you have **license** for it.

Do the steps in the illustration:

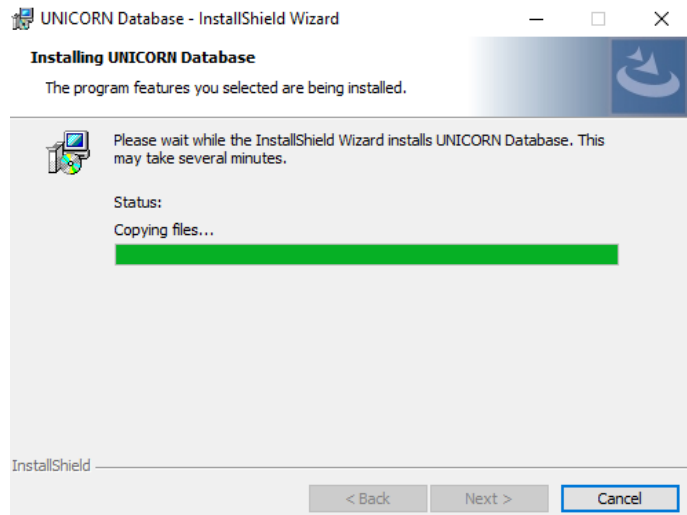


| Step | Action |
|------|--------|
|------|--------|

|    |                        |
|----|------------------------|
| 15 | Click <b>Install</b> . |
|----|------------------------|

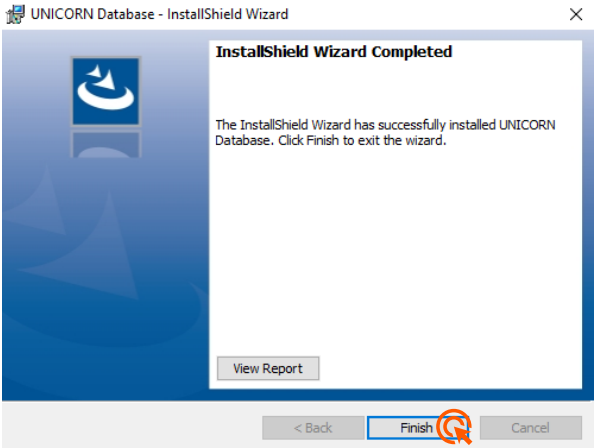


Please wait.....

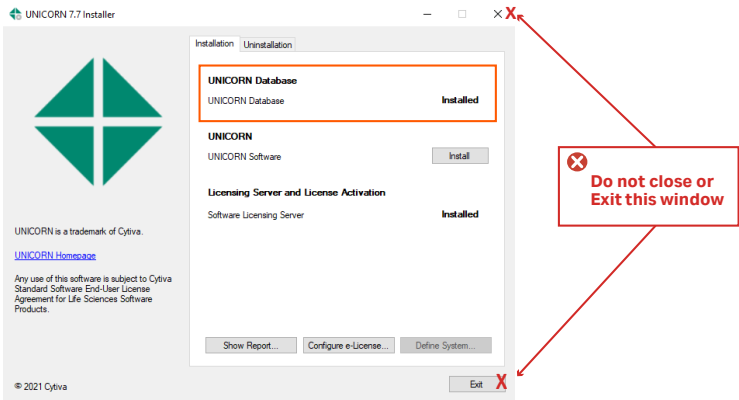


**Step      Action**

16      Click **Finish**.



If the following window appears, the database installation is finished.



**IMPORTANT**

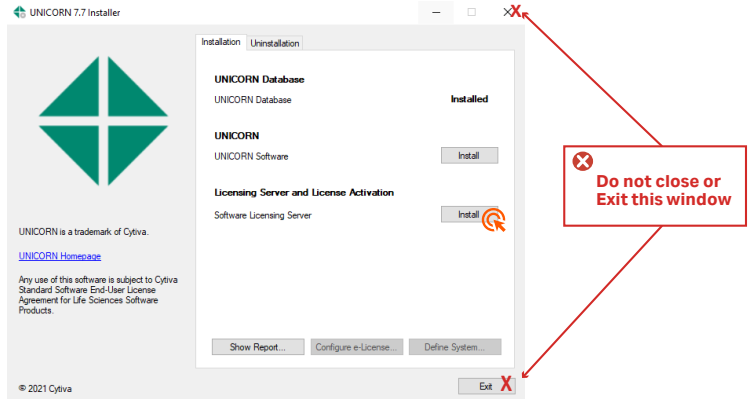
**Do not close the UNICORN Installer window** (see the illustration above). If you accidentally close it, perform step 4 - 10 of this procedure again.

17      Do **STEP 3: Install Software Licensing Server**.

## 3.3 Step 3: Install Software Licensing Server

| Step | Action |
|------|--------|
|------|--------|

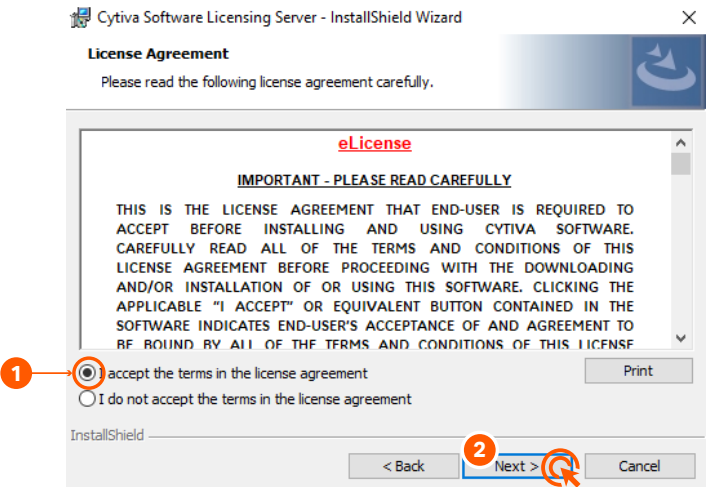
- |   |   |
|---|---|
| 1 | Click <b>Install</b> next to <b>Software Licensing Server</b> . |
|---|---|



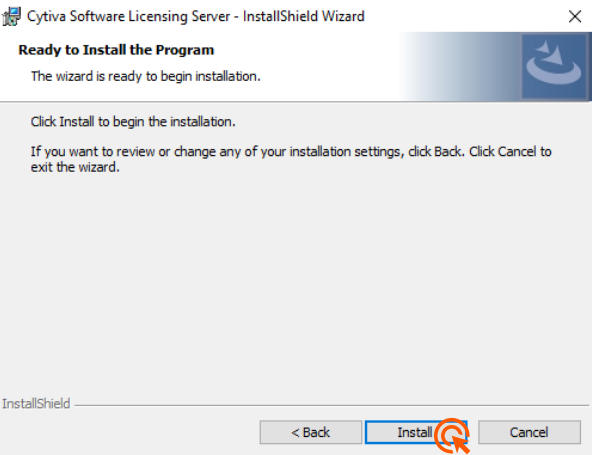
- |   |                     |
|---|---------------------|
| 2 | Click <b>Next</b> . |
|---|---------------------|



| Step | Action                        |
|------|-------------------------------|
| 3    | Accept the license agreement. |

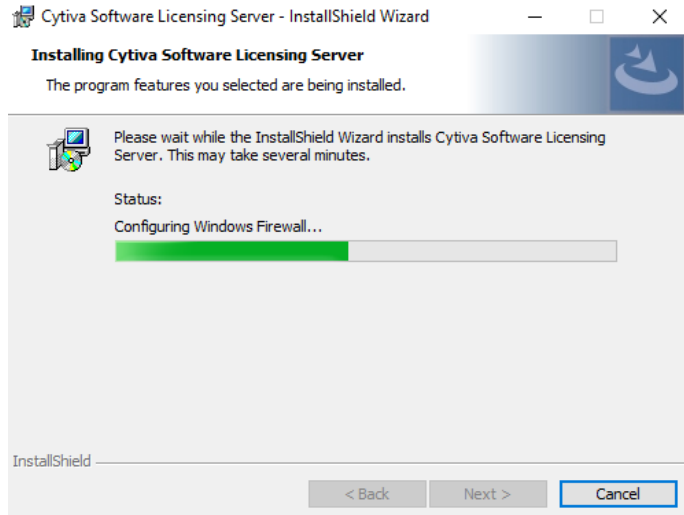


4 Click **Install**.

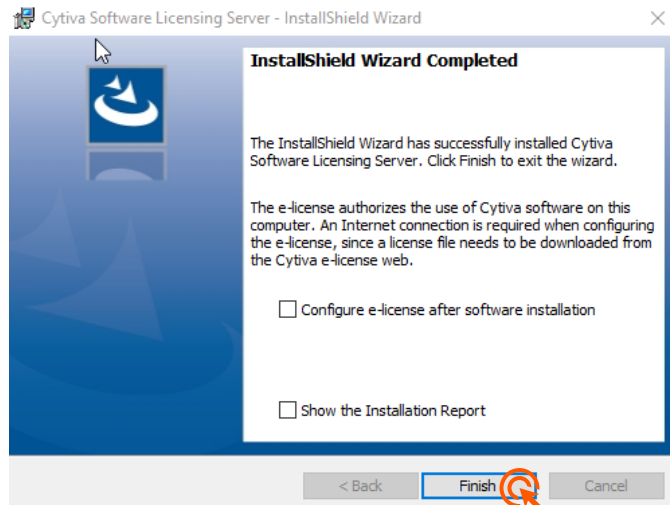


Please wait....

| Step | Action |
|------|--------|
|------|--------|

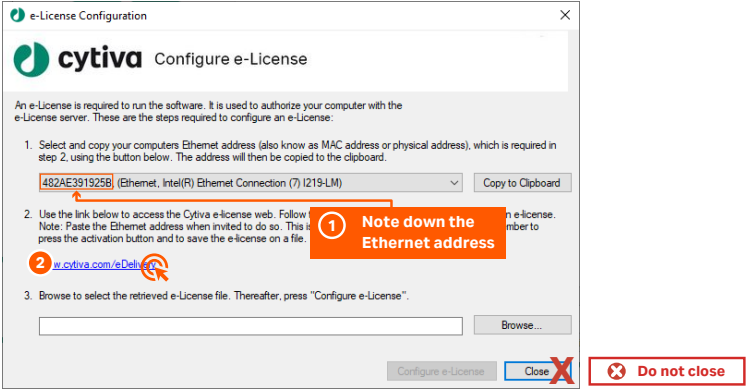


|   |                       |
|---|-----------------------|
| 5 | Click <b>Finish</b> . |
|---|-----------------------|



Step      Action

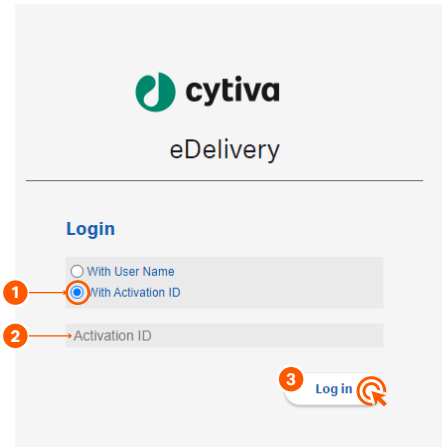
6 Follow the steps in the following illustration to configure an e-License:



**IMPORTANT**

The Ethernet address stated in the illustration above is **an example**. Note down the Ethernet address that appears **on your computer screen**.

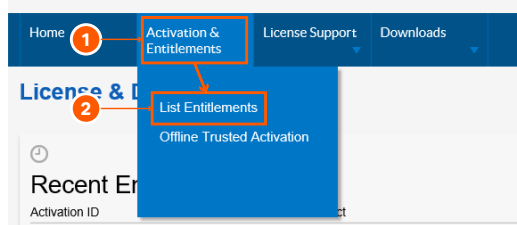
7 Follow the steps in the following illustration to log in:



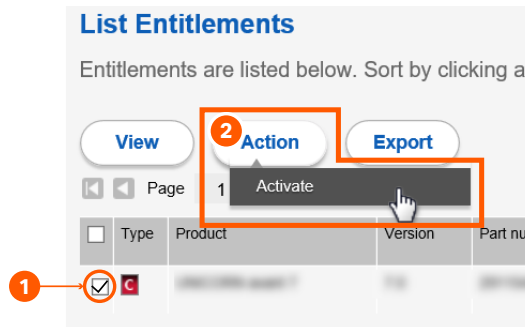


| Step | Action |
|------|--------|
|------|--------|

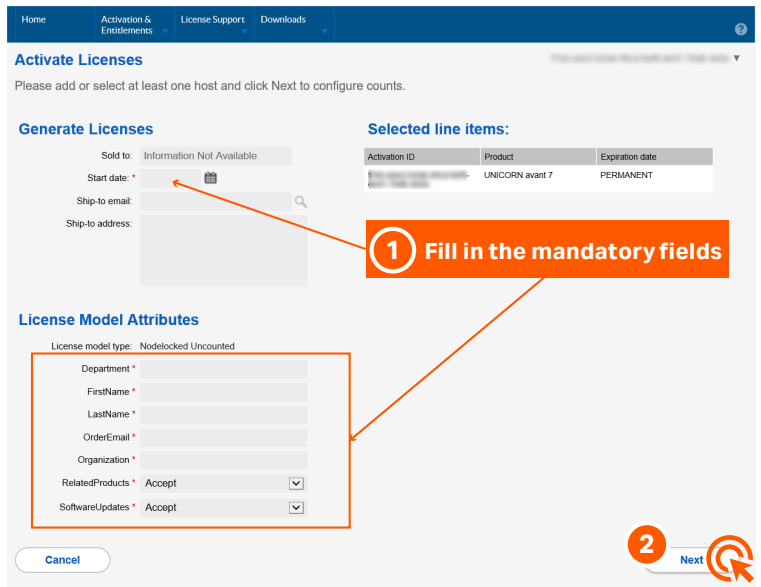
|   |   |
|---|---|
| 8 | Follow the direction in the following illustration: |
|---|---|



|   |   |
|---|---|
| 9 | Follow the steps in the following illustration: |
|---|---|



|    |   |
|----|---|
| 10 | Follow the steps in the following illustration: |
|----|---|



Step      Action

11      Follow the steps in the following illustration:

Configure Hosts

Please enter values for the hosts and click Verify to validate the license. Or click Generate to generate the license.

Configure Hosts

Server hosts: (no license hosts selected)

1

2

Cancel

Selected line items:

| Activation ID                           | Product         | Expiration date |
|---|-----------------|-----------------|
| 7Feb-ebc3-b2d5-49cd-8ef9-de41-7bdb-4e5e | UNICORN avant 7 | PERMANENT       |

BackGenerate

Create License Host

Please select a license host type and enter an appropriate value.

Nodelocked hosts: ETHERNET =

2 Enter the Ethernet address you have noted in step 2.

3 OKCancel

Configure Hosts

Please enter values for the hosts and click Verify to validate the license. Or click Generate to generate the license.

Configure Hosts

Server hosts: A4C3F0B51775

Cancel

Selected line items:

| Activation ID                           | Product         | Expiration date |
|---|-----------------|-----------------|
| 7Feb-ebc3-b2d5-49cd-8ef9-de41-7bdb-4e5e | UNICORN avant 7 | PERMANENT       |

BackGenerate

License details:

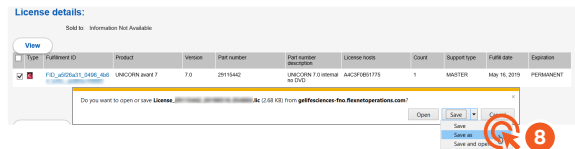
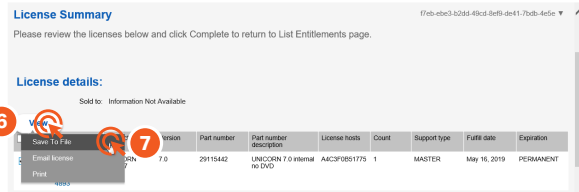
Sold to: Information Not Available

View

| Type | Fulfillment ID                            | Product         | Version | Part number | Part number description     | License hosts  | Co |
|------|---|-----------------|---------|-------------|-----------------------------|----------------|----|
| 1    | FID_a5f26a31_04f99_4b64_b43c_ab984e1f4893 | UNICORN avant 7 | 7.0     | 29115442    | UNICORN 7.0 internal no DVD | A4C3F0B51775 1 |    |

5

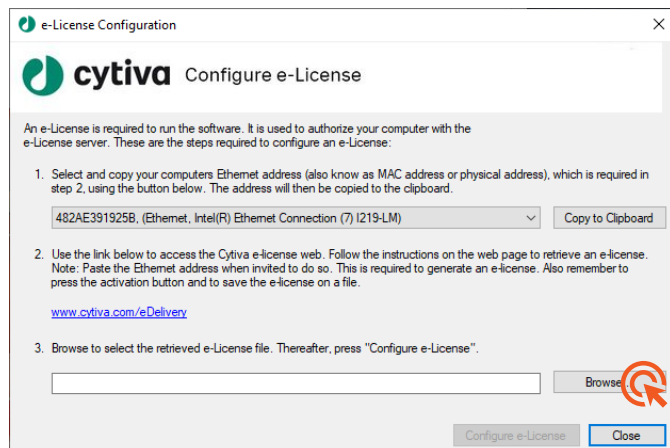
| Step | Action                        |
|------|-------------------------------|
| 12   | Continue following the steps: |



**Tip:**

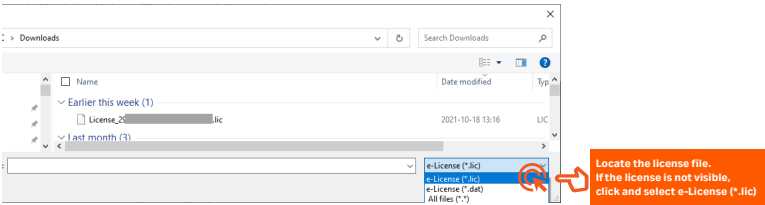
*It is recommended to rename the license so that the license can be easily identified later.*

13 Go back to the **e-License Configuration** window and click **Browse**.



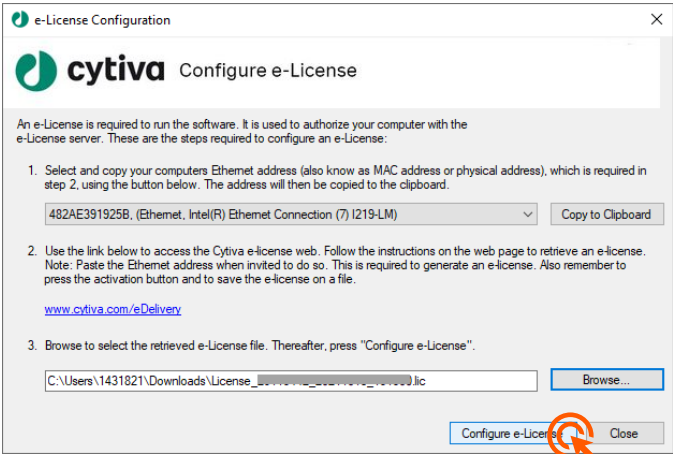
Step      Action

14      Browse to the e-License location.

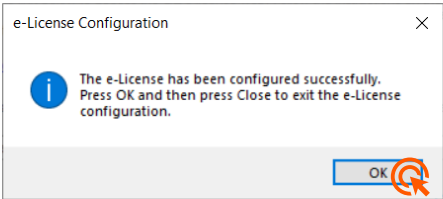


15      Click **Open**.

16      Complete the e-License configuration.

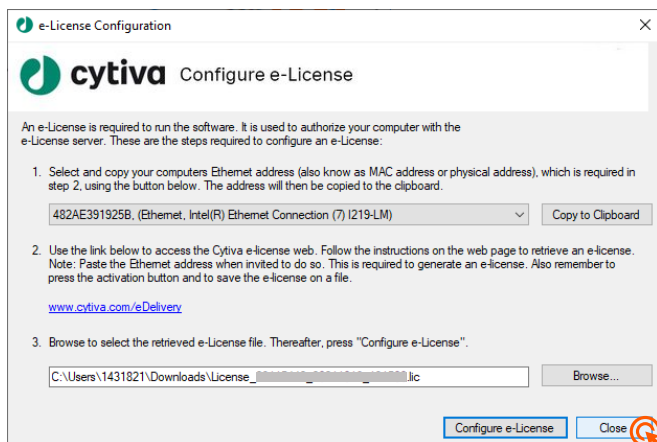


17      When the following dialog box appears, **the configuration is successful**, click **OK** to continue.



| Step | Action |
|------|--------|
|------|--------|

|    |   |
|----|---|
| 18 | Close the e-License Configuration window. |
|----|---|

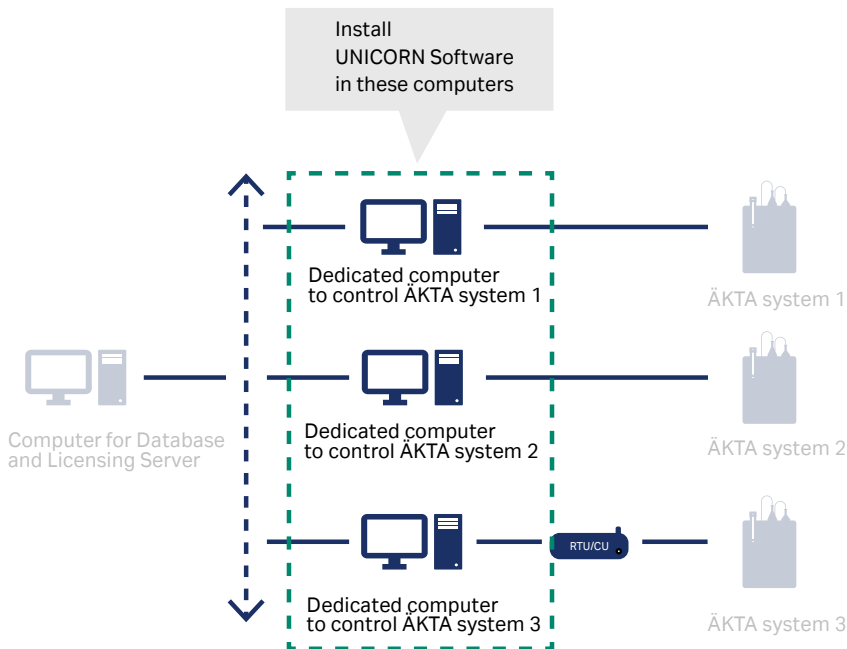


|    |   |
|----|---|
| 19 | Do <b>Step 4: Install UNICORN software.</b> |
|----|---|

### 3.4 Step 4: Install UNICORN software



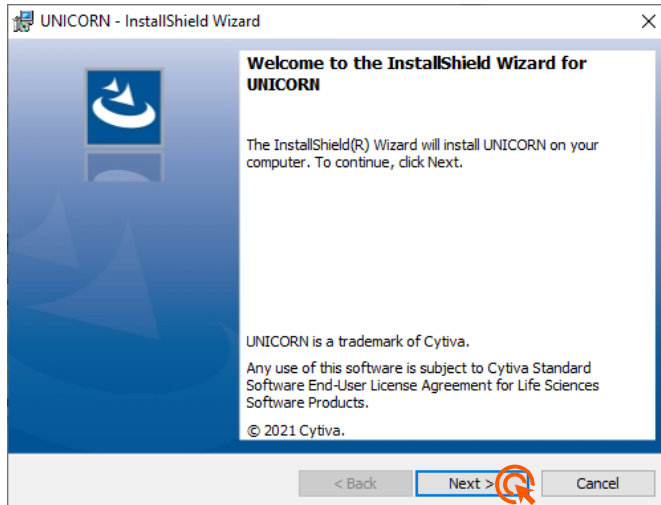
**IMPORTANT**  
**Perform the following steps** in all the dedicated computers controlling your ÄKTA systems (see the illustration below).



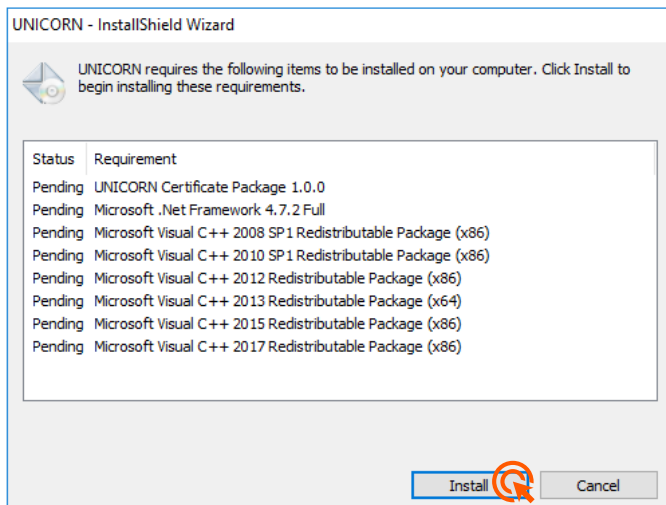
| Step | Action   |
|------|--|
| 1    | Locate and double-click the <b>UNICORN_7.x.x.xxx_eDelivery_Portal</b> folder.                                    |
| 2    | Double-click <b>Setup.exe</b> .<br>If the <b>Open File - Security Warning</b> window appears, click <b>Run</b> . |

| Step | Action |
|------|--------|
|------|--------|

|   |                     |
|---|---------------------|
| 3 | Click <b>Next</b> . |
|---|---------------------|

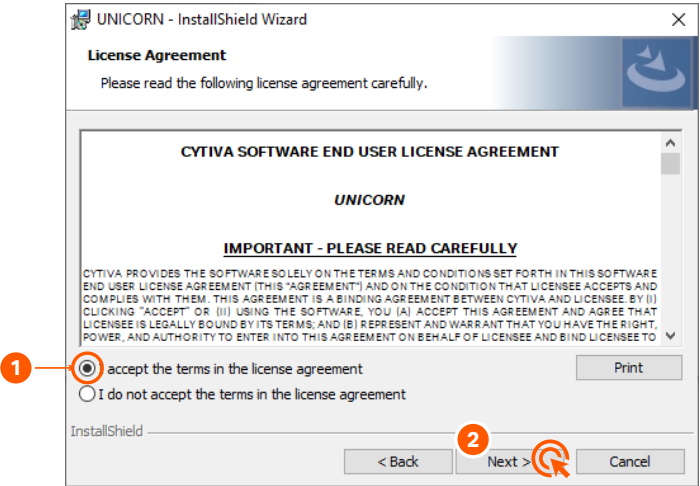


4 If your computer is **missing any software requirements**, the installer will install them. The computer can **restart** several times. After restart, double-click the **Setup.exe** again, see **step 5**.

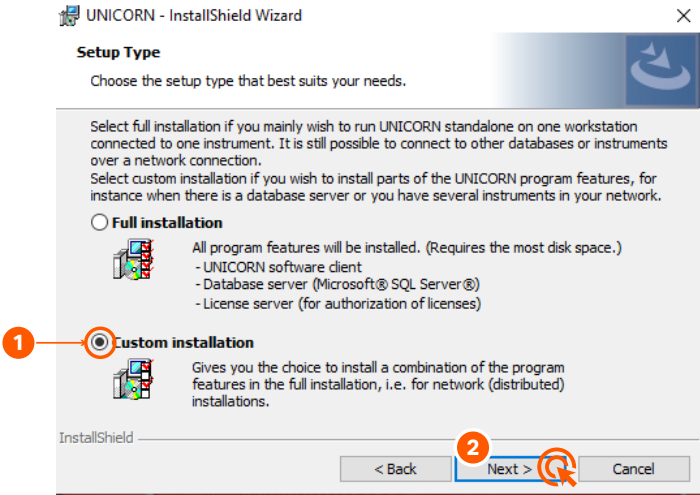


Step      Action

5      Accept the license agreement.



6      Select the installation type.



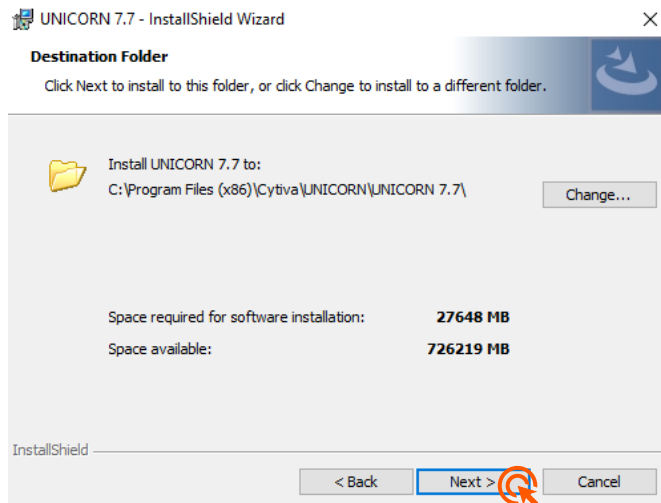


| Step | Action |
|------|--------|
|------|--------|

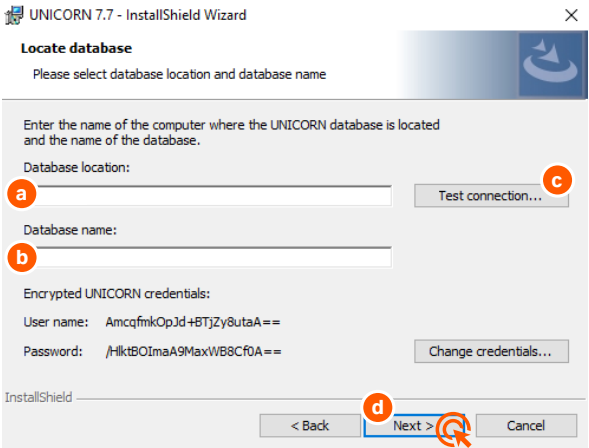
|   |                     |
|---|---------------------|
| 7 | Click <b>Next</b> . |
|---|---------------------|



|   |                     |
|---|---------------------|
| 8 | Click <b>Next</b> . |
|---|---------------------|



| Step | Action        |
|------|---------------|
| 9    | Do the steps: |



- a. Enter the name of the computer where the database is installed.
- b. Enter the name of the database.
- c. Click **Test connection** to check if the database is reachable.  
Result: A pop-up appears to confirm if the connection is successful Click OK on the pop-up.
- d. Click **Next** to continue.

10

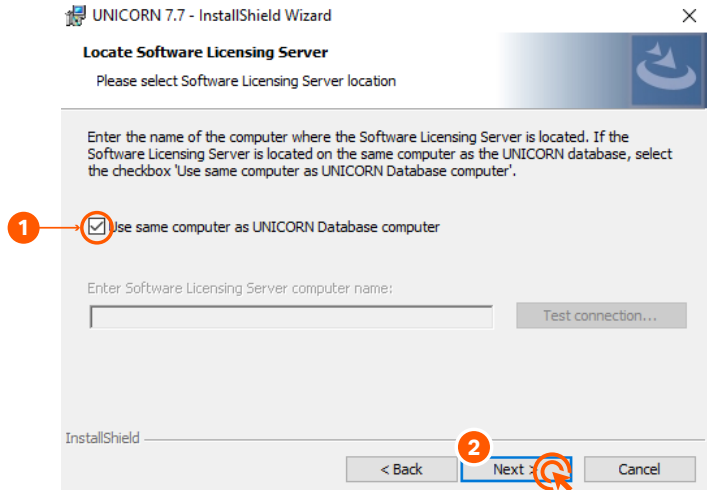


**IMPORTANT**

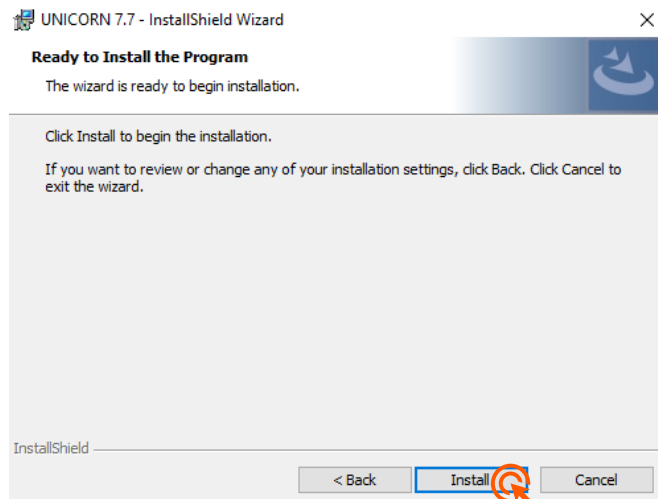
If you have chosen to install the **Software Licensing Server** on a different computer, enter the licensing server name instead of selecting **Use same computer as UNICORN Database computer**.

| Step | Action |
|------|--------|
|------|--------|

Do the steps in the following illustration:

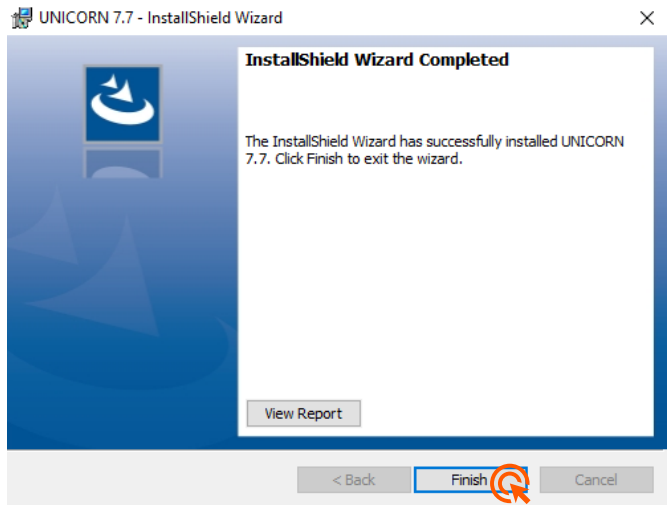


11 Click **Install**.

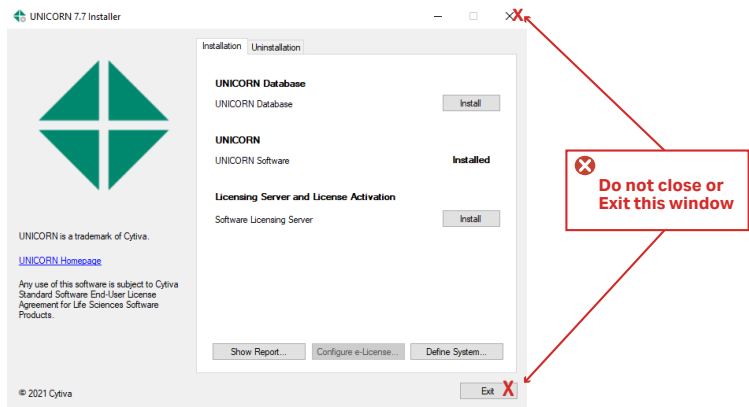


| Step | Action |
|------|--------|
|------|--------|

|    |                       |
|----|-----------------------|
| 12 | Click <b>Finish</b> . |
|----|-----------------------|



The following window confirms that **UNICORN Software** is installed successfully.



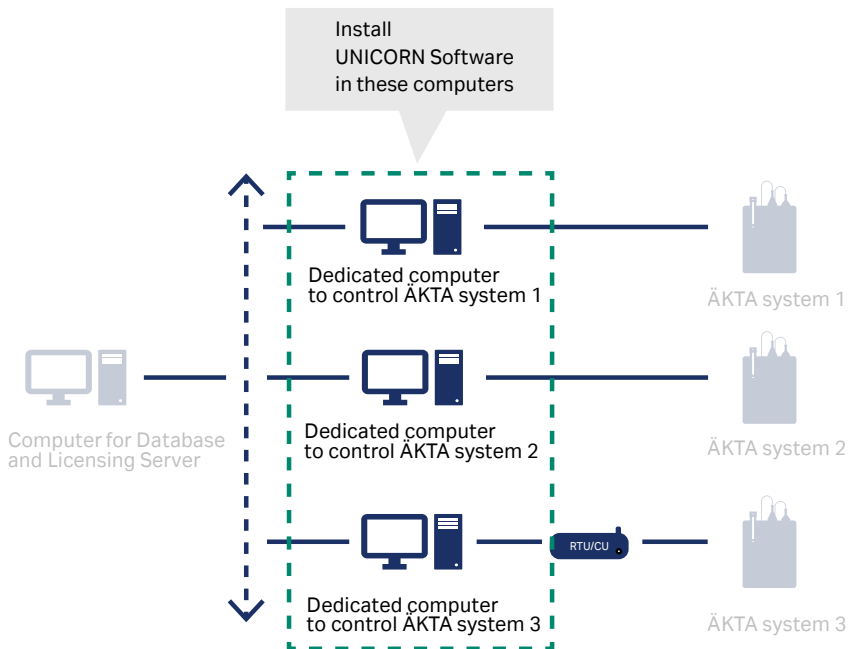
|    |                                  |
|----|----------------------------------|
| 13 | Do <b>Step 5: Configure IP</b> . |
|----|----------------------------------|

### 3.5 Step 5: Configure IP



**IMPORTANT**

**Perform the following steps** in all the dedicated computers controlling your ÄKTA systems (see the illustration below).

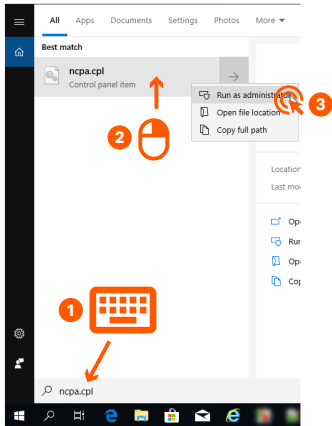


| Step | Action  |
|------|---|
| 1    | Make sure that your dedicated computer is connected to internet and to the ÄKTA system. |
| 2    | Click the Windows search icon.  |



Step Action

3 Enter **ncpa.cpl** in the **search box**, and then press **Enter**.



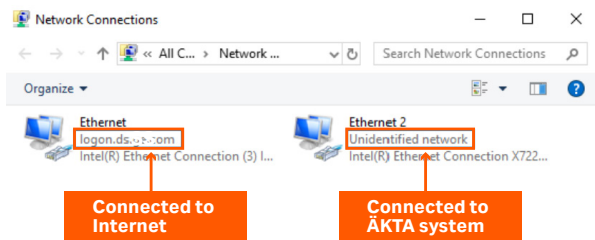
**Note:**

For **Windows 7** user, Click **Start**, enter **ncpa.cpl** in the **search box**, and then press **Enter**.



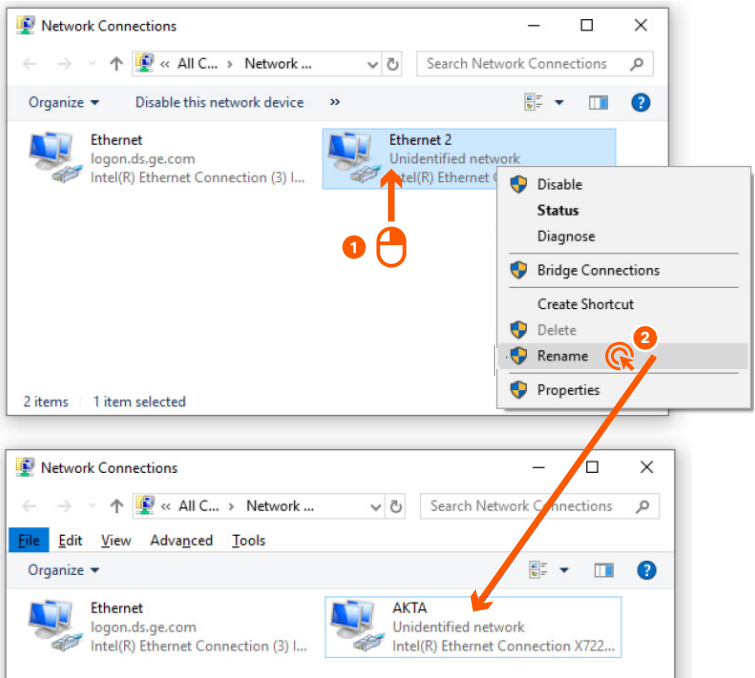
**IMPORTANT**

If you have two Ethernet cards, one Ethernet card is connected to internet (**Ethernet in the illustration below**) and the other (**Ethernet 2 in the illustration below**) is connected to the ÄKTA system. Generally, the Ethernet card connected to the internet has the company domain name. For example, in the illustration below, it is **logon.ds....com**. Ethernet card connected to the ÄKTA system generally states **Unidentified network** as seen in the illustration below.

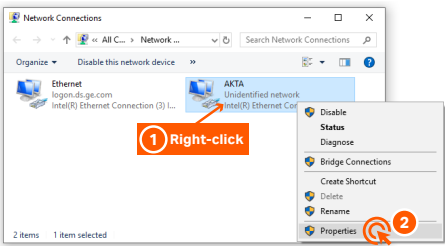


**Step      Action**

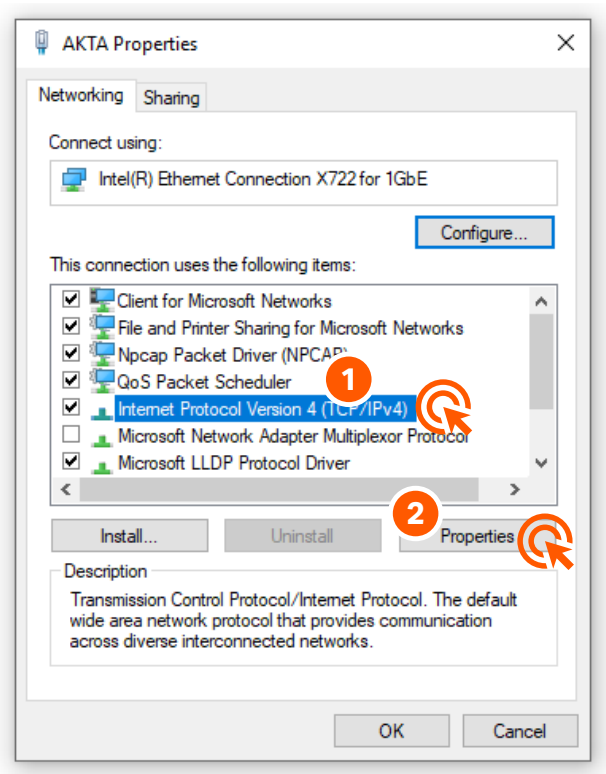
4      Rename the **Ethernet 2** connection to **AKTA**.



5      Access the **Properties** window of the AKTA network connection.



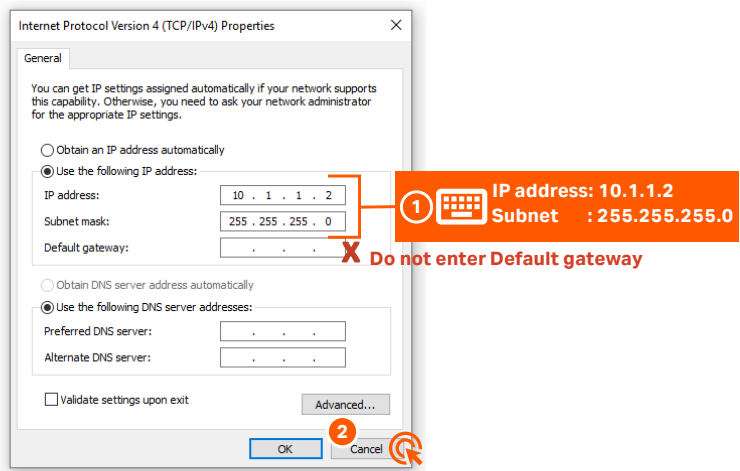
| Step | Action                                      |
|------|---|
| 6    | Select <b>Internet Protocol Version 4</b> . |



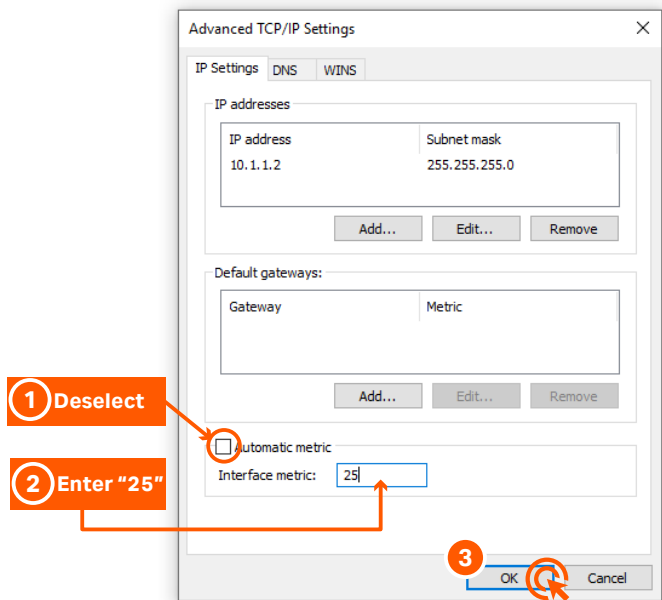


**Step      Action**

- 7      Enter the **IP address** and the **Subnet mask** as shown in the following illustration:



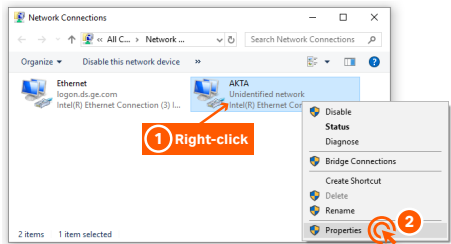
- 8      Apply the advanced TCP/IP settings as shown in the following illustration:



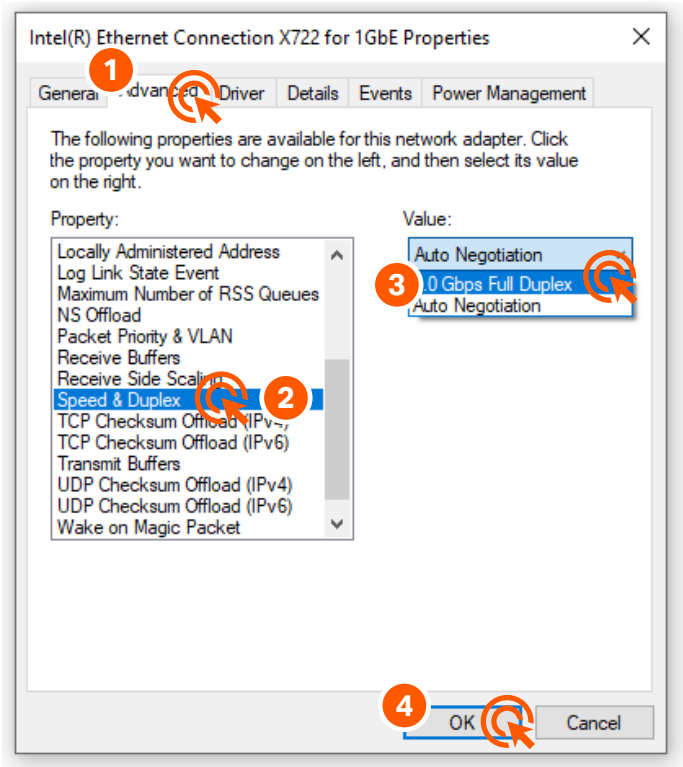
- 9      Click **OK** or **Close** in all the open dialog boxes.

**Step      Action**

10      Access the **Properties** window of the ÄKTA network connection.



11      Select the **Speed & Duplex** property and its intended value as shown in the following illustration:



**Note:**  
For ÄKTA avant, ÄKTA pure, ÄKTA go, ÄKTA pilot 600 etc., set **Speed & Duplex** to **Auto Negotiation** or at least **100Mb Full Duplex**.  
For a CU based system (ÄKTA, Espresso etc), set to **10mbps Half Duplex**.

12      Do **Step 6: Define a system**.

## 3.6 Step 6: Define a system

See [Section 2.5 Step 5: Define a system, on page 29](#).

## 4 Troubleshooting

For information on troubleshooting, see *UNICORN 7.x Administration and Technical Manual*. This document is available on the Cytiva Web.

Page intentionally left blank



## [cytiva.com/unicorn](https://cytiva.com/unicorn)

Cytiva and the Drop logo are trademarks of Global Life Sciences IP Holdco LLC or an affiliate.

ÄKTA, ÄKTA pure, ÄKTA go, and UNICORN are trademarks of Global Life Sciences Solutions USA LLC or an affiliate doing business as Cytiva.

Microsoft and Windows are registered trademarks of Microsoft Corporation.

All other third-party trademarks are the property of their respective owners.

© 2020-2021 Cytiva

UNICORN © 2020-2021 Cytiva

Any use of UNICORN is subject to Cytiva Standard Software End-User License Agreement for Life Sciences Software Products. A copy of this Standard Software End-User License Agreement is available on request.

For local office contact information, visit [cytiva.com/contact](https://cytiva.com/contact)

29414475 AC V:3 12/2021