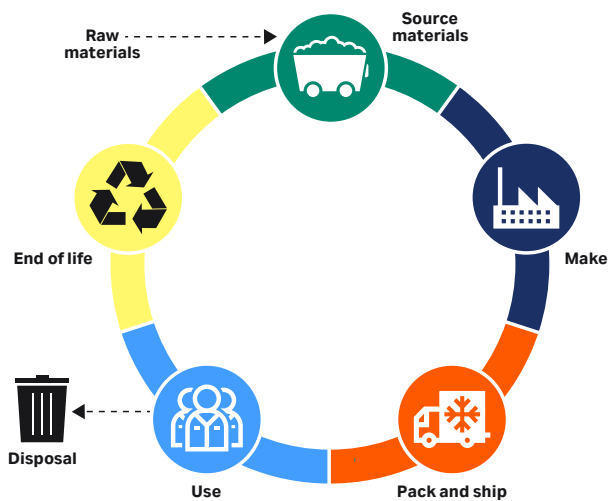
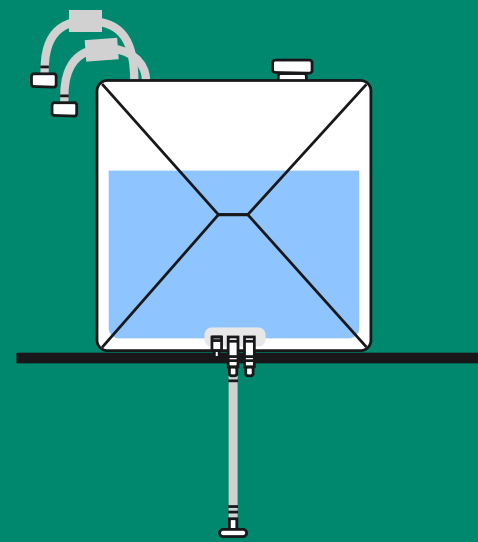


Xcellerex™ XDM single-use mixer bag with Fortem film - 200 L

Sustainability info sheet



Our sustainability approach

Sustainability is a core principle that guides every facet of our business, shaping how we operate responsibly and create long-term value.

At Cytiva, we are committed to advancing sustainability by reducing CO₂ emissions and environmental impact while delivering innovative, customer-focused solutions. This includes decarbonizing our sites through reductions in emissions, waste, water use, and packaging, and building a more resilient, low-carbon supply chain. By digitally enabling sustainability, we meet regulatory demands, exceed customer expectations, and accelerate our progress.

Central to these efforts is our commitment to product data transparency, ensuring that customers have the information they need to make informed, sustainable choices.

Product carbon footprint methodology

| | |
|-------------------------------------|--|
| PCF (KgCO ₂ eq.) | Available upon request |
| Producer | Cytiva |
| Product | Xcellerex™ XDM single-use mixer bag with Fortem film - 200 L |
| Product code | 29299915 |
| Declared unit | One XDM mixer bag w/Fortem film - 200 L including packaging |
| System boundaries | Cradle-to-Gate |
| Producers Greenhouse gas accounting | Scope 3 (upstream) |
| Emission Scope | Greenhouse gas emissions |
| Sources of secondary data | Ecoinvent v3.10, Exiobase v3.8.2 and Base Carbone v23 |
| Time-related scope | 2023 |
| Technological scope | Technology from production plant |
| Allocation | Physical |
| Impact assessment method | IPCC 2021 GWP100 |
| Data quality | Good-to-medium |
| Methodology standard | GHG Protocol, PACT |



Life cycle analysis

The percentages shown below represent the contribution each life cycle stage makes to the product's total carbon footprint. These life cycle stages are provided to align with the PACT methodology of reporting product environmental impact.

Raw materials – 37%

We assess product carbon footprints using factors like materials, weight, and logistics. We prioritize sourcing raw materials from suppliers with an EcoVadis rating of 55 or above.

Manufacturing – 51%

The mixing consumables bags are manufactured at sites running on 100% renewable energy. We are targeting a 50.4% reduction in Scope 1 and 2 emissions by 2032.

Packaging and distribution – 12%

The cardboard packaging is made from 100% recycled material and is fully recyclable as well. We prioritize lower emission transport (ocean, truck, or rail) whenever possible.



SCIENCE
BASED
TARGETS

Connect with us

Have questions about sustainability at Cytiva?

Looking to request the carbon footprint of this product for your own Scope 3 calculations?*

Contact us by emailing us at sustainability@cytiva.com or open a support request case under your Account** at cytiva.com.

* Sharing of PCF data requires a confidentiality agreement.
** Registered Cytiva account is required.

WE SUPPORT



This statement of our commitment to sustainability reflects our support of the UN Global Compact and its 10 principles on human and labor rights, environmental protection, and anti-corruption. It is echoed in relevant policies, procedures and strategic priorities across Cytiva.

cytiva.com/sustainability

Cytiva and the Drop logo are trademarks of Life Sciences IP Holdings Corporation or an affiliate doing business as Cytiva. Any other trademarks are the property of their respective owners. The Danaher trademark is a proprietary mark of Danaher Corporation.

© 2025 Cytiva.

For local office contact information, visit cytiva.com/contact

CY57147-12May26-FL

