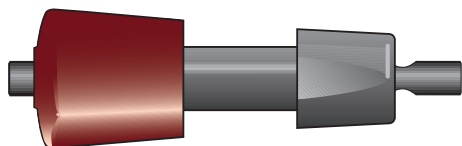


Mini Q 4.6/50 PE and Mini S 4.6/50 PE

High Performance Columns

Instructions for Use

Quick information



Mini Q™ 4.6/50 PE and Mini S™ 4.6/50 PE are Tricorn™ high performance columns. The columns are pre-packed PEEK columns for high performance ion exchange chromatography of proteins, peptides, polynucleotides and other biomolecules.

Column data

Matrix	Polystyrene/divinyl benzene	
Bead form	Spherical, non-porous monodisperse	
Particle size	3 µm	
Column dimensions	4.6 x 50 mm	
Bed volume	0.8 ml	
Maximum loading capacity	3-5 mg	
(will vary depending on sample and loading conditions)		
pH stability		
regular use	2 to 12	
cleaning	1 to 14	
Temperature		
operating	4 °C to 40 °C	
storage	4 °C to 30 °C	
Flow rate (water at room temperature)		
recommended	0.5-2.0 ml/min	
maximum	2 ml/min	
Pressure over column		
maximum	18 MPa, 180 bar, 2610 psi	
	Mini Q	Mini S
Type of exchanger	Strong anion	Strong cation
Charged group	O-CH ₂ -CHOH-CH ₂ - O-CH ₂ -CHOH-CH ₂ - N ⁺ (CH ₃) ₃	-O-CH ₂ -CHOH-CH ₂ - O-CH ₂ -CHOH-CH ₂ - SO ₃ ⁻
Ionic capacity	0.085-0.115 mmol Cl ⁻ /ml medium	0.018-0.034 mmol H ⁺ /ml medium

First-time use

Equilibrate the column for first-time use or after long term storage as follows:

Step	Action
1	4 ml distilled water at 0.5 ml/min at room temperature.
2	4 ml start buffer at 0.5 ml/min at room temperature.
3	4 ml elution buffer (including at least 1 M NaCl) at 0.8 ml/min at room temperature.
4	4 ml start buffer at 0.8 ml/min at room temperature.

Note:

Before connecting the column to a chromatography system, start the pump to remove all air and debris from the system, particularly in the tubing and valves.

Try these conditions first

Flow rate:	0.8 ml/min at room temperature
Gradient:	0-100% elution buffer in 20 column volumes (CV)
Start buffer (Mini Q) ¹ :	20 mM Tris-HCl, pH 8.0
Elution buffer (Mini Q) ¹ :	20 mM Tris-HCl + 1.0 M NaCl, pH 8.0
Start buffer (Mini S) ¹ :	20 mM 2-[N-morpholino] ethanesulphonic acid (MES), pH 6.0
Elution buffer (Mini S) ¹ :	20 mM MES + 1.0 M NaCl, pH 6.0

¹ Users of ÄKTA™ design system may select one of the buffer recipes recommended for anion exchange chromatography at pH 8 or cation exchange chromatography at pH 6.

Equilibration between runs

Proceed according to steps 3 and 4 in the section above. Extended equilibration may be needed if detergents are included in the eluent.

Read the section [Optimisation, on page 2](#) for information about how to optimize a separation.

Buffers and solvent resistance

Install an on-line filter upstream of the injection valve. Buffers and solvents with increased viscosity will affect the backpressure and flow rate. De-gas and filter all solutions through a 0.22 µm filter.



Daily use

All commonly used aqueous buffers,
pH 2–12

Urea, up to 8 M

Acetonitrile, up to 30% in aqueous
buffers

Non-ionic detergents

Cationic detergents (Mini Q)

Anionic detergents (Mini S)

Cleaning

Acetonitrile, up to 100%

Sodium hydroxide, up to 2 M

Ethanol, up to 100%

Methanol, up to 100%

Acetic acid, up to 75%

Isopropanol, up to 100%

Hydrochloric acid, up to 1 M

Guanidine hydrochloride, up to 6 M



Avoid

Unfiltered solutions

Oxidizing agents

Anionic detergents (Mini Q)

Cationic detergents (Mini S)

Sample recommendations

Net charge of target molecule	negative (Mini Q), positive (Mini S)
Recommended initial sample load	≤ 0.7 mg
Preparation	Dissolve the sample in start buffer, filter through a 0.22 µm filter or centrifuge at 10 000 x g for 10 min



In-depth information

Delivery/storage

Mini Q 4.6/50 PE is delivered in 20% ethanol. Mini S 4.6/50 PE is delivered in 20% ethanol containing 0.2 M sodium acetate. If the column is to be stored for more than two days after use, wash the column with 4 ml distilled water and then equilibrate Mini Q 4.6/50 PE with at least 4 ml 20% ethanol or Mini S 4.6/50 PE with at least 4 ml 20% ethanol containing 0.2 M sodium acetate.

Choice of eluent

To avoid local disturbances in pH caused by buffering ions participating in the ion exchange process, select an eluent with buffering ions of the same charge as the substituent groups on the ion exchanger.

Choose the start buffer pH so that substances to be bound to the ion exchanger are charged, e.g. at least 1 pH unit above the isoelectric point for anion exchangers and at least 1 pH unit below the isoelectric point for cation exchangers. The figures below list a selection of standard aqueous buffers. The table below lists suggested volatile buffers that can be used in cases where the purified substance has to be freeze-dried.

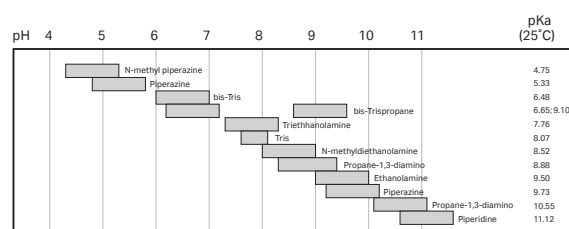


Fig 1. Recommended buffers for anion exchange chromatography.

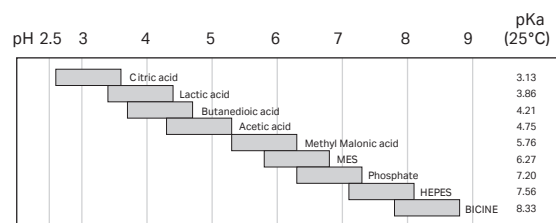


Fig 2. Recommended buffers for cation exchange chromatography.

Table 1. Volatile buffer systems.

pH	Substance
3.3–4.3; 4.8–5.8	Pyridine/formic acid
3.3–4.3; 9.3–10.3	Trimethylamine/formic acid
4.3–5.8	Pyridine/acetic acid
3.3–4.3; 8.8–9.8	Ammonia/formic acid
4.3–5.3; 8.8–9.8	Ammonia/acetic acid
5.9–6.9; 9.3–10.3	Trimethylamine/carbonate
5.9–6.9; 8.8–9.8	Ammonium carbonate/ammonia
4.3–5.3; 7.2–8.2	N-ethylmorpholine/acetate

Optimisation

Perform a first run as described in the section [Try these conditions first, on page 1](#). If the obtained results are unsatisfactory, consider the following:

Action	Effect
Change pH/buffer salt (see the figures above for buffers)	Changes selectivity, gives weaker/stronger binding.
Change salt, counter ions and/or co-ions	Changes selectivity.
Decrease the sample load	Improves resolution.
Decrease the flow rate	Improves resolution.

Action	Effect
Change gradient slope	Shallower gradients improve selectivity but broaden peaks (decrease efficiency). A steeper gradient will sharpen peaks, but move them closer together.

For more information, please refer to the handbook "*Ion Exchange Chromatography and Chromatofocusing*", which can be ordered from Cytiva, or to the "*Method Handbook*" supplied with each ÄKTA design system.

Cleaning-in-place (CIP)

Regular cleaning:

Wash the column with 1.5 ml 2 M NaCl after each run to elute material still bound to the column. If detergents have been used, rinse the column with 4 ml distilled water followed by 1.5 ml 2 M NaCl. Re-equilibrate the column until the UV baseline and conductivity are stable (usually at least 10 CV).

More rigorous cleaning:

Reverse the flow direction and run the following sequence of solutions at a flow rate of 0.2 ml/min:

Step	Action
1	3 ml 1 M NaCl
2	3 ml 1 M NaOH
3	3 ml 1 M HCl
4	3 ml 1 M NaCl
Note: Always rinse with at least 1.5 ml distilled water between each step.	

Do not store the column in 1 M HCl or 1 M NaOH.

Depending on the nature of the contaminants, the following cleaning solutions may also be appropriate:

- 30% Isopropanol
- 30% Acetonitrile
- 2 M NaOH containing 1 M NaCl
- 75% Acetic acid containing 1 M NaCl
- 1% Trifluoroacetic acid

Note: Always rinse with at least 1.5 ml distilled water after any of the above cleaning solutions has been used.

If column performance is still not restored, inject a solution of 1 mg/ml pepsin in 0.1 M acetic acid including 0.5 M NaCl and leave overnight at room temperature or one hour at 37°C. Depending on the contaminant, other enzymes may also be used, e.g. DNase. After enzymatic treatment, repeat steps 1–4 described above. After cleaning, equilibrate the column in the normal flow direction before use.

DO NOT OPEN THE COLUMN!

Troubleshooting

Symptom	Remedy
Increased back-pressure over the column	Reverse the flow direction and pump 4 ml elution buffer at a flow rate of 0.1 ml/min through the column. Return to normal flow direction and run for 10 minutes at a flow rate of 0.5 ml/min. If high back-pressure persists, clean the column.
Loss of resolution and/or decreased sample recovery	Clean the column according to the procedure described in the section More rigorous cleaning , on page 3.
Air in the column	Reverse the flow direction and pump 10 ml of well de-gassed start buffer through the column at a flow rate of 0.2 ml/min.

Column performance control

Check the performance of the column when new by running the separation described in [Fig. 3, on page 3](#) and [Fig. 4, on page 4](#). [Fig. 3, on page 3](#) and [Fig. 4, on page 4](#) shows a typical chromatogram on an optimised system. Since the system can profoundly affect the resolution it is most meaningful to compare runs done on the same system. Check the column at regular intervals and whenever you suspect a problem.

Column Mini Q 4.6/50 PE

Sample:	1. a-Amylase (48 µg/ml) 2. a-Lactalbumin (72 µg/ml) 3. Trypsin inhibitor (0.43 mg/ml)
Sample volume:	200 µL
Gradient:	0–100% elution buffer in 12 CV
Start buffer:	20 mM Tris-HCl, pH 7.5
Elution buffer:	20 mM Tris-HCl+ 0.25 M NaCl, pH 7.5
Flow rate:	0.83 ml/min (room temperature)

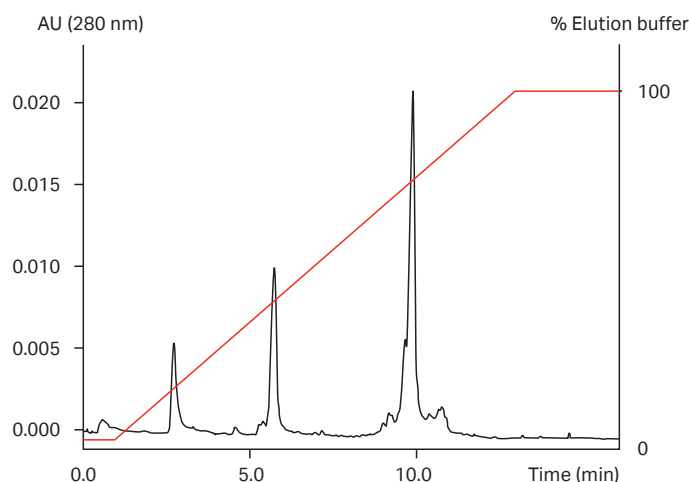


Fig 3. Typical chromatograms from a function test of Mini Q 4.6/50 PE.

Column Mini S 4.6/50 PE

Sample:	1. a-Chymotrypsinogen (25 µg/ml) 2. Ribonuclease A (75 µg/ml) 3. Lysozyme (25 µg/ml)
Sample volume:	200 µL

Gradient: 0–100% elution buffer in 12 CV
 Start buffer: 20 mM Sodium acetate, pH 5.0
 Elution buffer: 20 mM Sodium acetate + 0.4 M NaCl, pH 5.0
 Flow rate: 0.83 ml/min (room temperature)

Designation	No. per pack	Code No.
Union M6 female/1/16" male	8	18111258
On-line filter (1/16")	1	18111801
Handbook:		
Ion Exchange Chromatography & Chromatofocusing	1	11000421

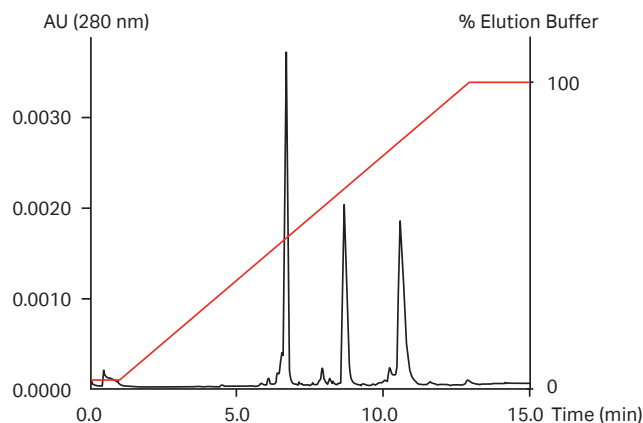


Fig 4. Typical chromatograms from a function test of Mini S 4.6/50 PE.

Ordering information

Designation	No. per pack	Code No
Mini Q 4.6/50 PE	1	17517701
Mini S 4.6/50 PE	1	17517801

Related products

Designation	No. per pack	Code No.
HiTrap™ Desalting	5 × 5 ml	17140801

Accessories

Designation	No. per pack	Code No.
Tubing connectors:		
Fingertight connector 1/16" male	10	18111255

cytiva.com/protein-purification

Cytiva and the Drop logo are trademarks of Global Life Sciences IP Holdco LLC or an affiliate.

ÄKTA, HiTrap, Mini Q, Mini S and Tricorn are trademarks of Global Life Sciences Solutions USA LLC or an affiliate doing business as Cytiva.

All other third-party trademarks are the property of their respective owners.

© 2020 Cytiva

All goods and services are sold subject to the terms and conditions of sale of the supplying company operating within the Cytiva business. A copy of those terms and conditions is available on request. Contact your local Cytiva representative for the most current information.

For local office contact information, visit cytiva.com/contact

71501792 AH V:4 10/2020

