

Replace Column valve

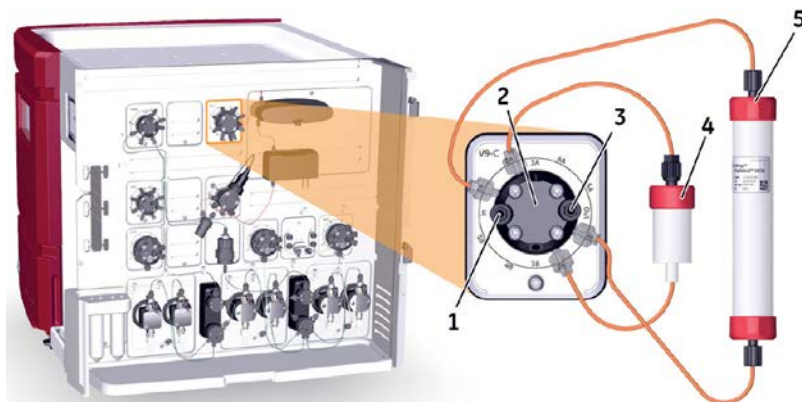
Instructions

Scope

Instructions how to replace Column valve V9-C (28956506) or Column valve V9H-C (28979241).

Location and illustration of Column valve

The illustration below shows the location of the Column valve and also an enlargement of the Column valve with connected columns. In ÄKTA™ avant 25, the Column valve is labelled **V9-C**. In ÄKTA avant 150, the Column valve is labelled **V9H-C**.



Part	Function
1	Inlet port with built-in pressure sensor
2	Column valve
3	Outlet port with built-in pressure sensor
4	HiTrap™ column connected to port 2A and 2B
5	HiPrep™ column connected to port 1A and 1B

Instruction

The instruction below describes how to replace a valve module in the instrument.

Note: *The illustrations show the principle how to replace a valve. The position of the valve on the instrument and the used type of valve will depend on the valve being replaced.*



WARNING

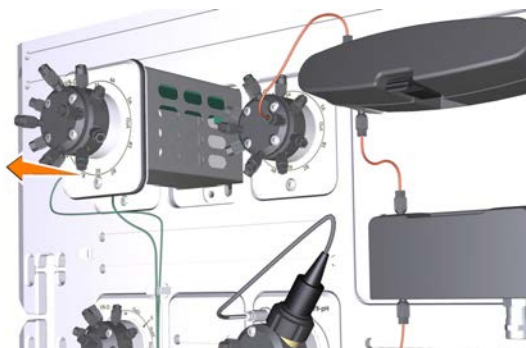
Disconnect power. Always switch off power to the instrument before replacing any component on the instrument, unless stated otherwise in the user documentation.

Step	Action
1	Disconnect power from the instrument by switching off the instrument with the Power switch located on the left hand side of the instrument.
2	Loosen the valve module with a Torx screwdriver.

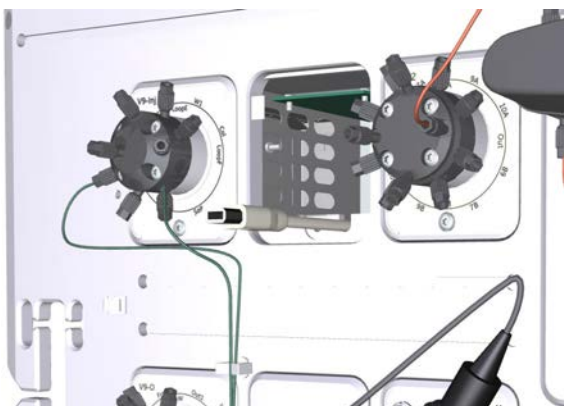


Step	Action
------	--------

- | | |
|---|--------------------------|
| 3 | Remove the valve module. |
|---|--------------------------|



- | | |
|---|---|
| 4 | Disconnect the cable and secure it in the slit. |
|---|---|



- | | |
|---|--|
| 5 | Connect the cable to the new valve module. |
|---|--|



Step	Action
------	--------

- | | |
|---|--------------------------|
| 6 | Insert the valve module. |
|---|--------------------------|

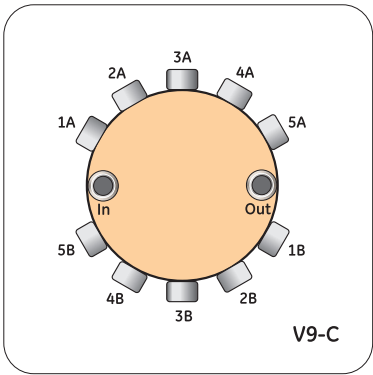


- | | |
|---|------------------------------------|
| 7 | Fasten it with a Torx screwdriver. |
|---|------------------------------------|



Connect tubing

The illustration below shows the ports of the Column valve.



Port	Description
In	Inlet from Injection valve via a built-in pressure monitor.
1A-5A	Ports for connection to the top of columns.
1B-5B	Ports for connection to the bottom of columns.
Out	Outlet to UV monitor via a built-in pressure monitor.



cytiva.com/AKTA

Cytiva and the Drop logo are trademarks of Global Life Sciences IP Holdco LLC or an affiliate.

AKTA, HiPrep, and HiTrap are trademarks of Global Life Sciences Solutions USA LLC or an affiliate doing business as Cytiva.

All other third-party trademarks are the property of their respective owners.

© 2020–2021 Cytiva

All goods and services are sold subject to the terms and conditions of sale of the supplying company operating within the Cytiva business. A copy of those terms and conditions is available on request. Contact your local Cytiva representative for the most current information.

For local office contact information, visit cytiva.com/contact

28968643 AC V:4 05/2021