

# Replace inlet valves

## Instructions

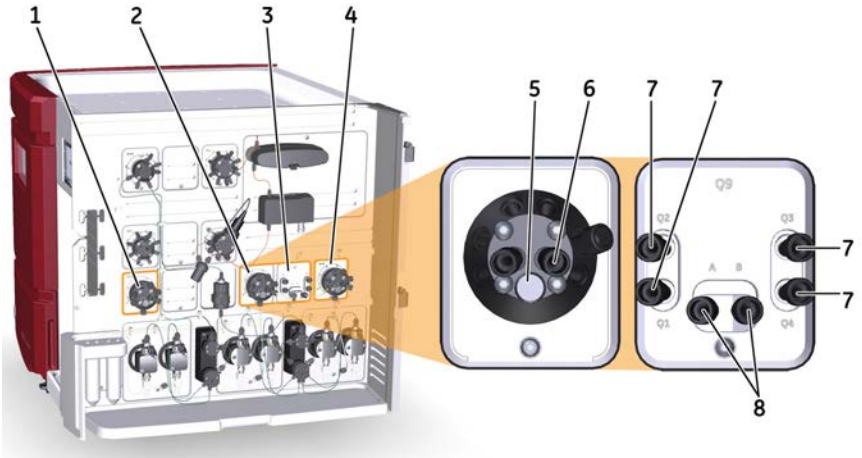
### Scope

Instructions how to replace the inlet valves:

ÄKTA avant 25	ÄKTA avant 150
V9-IA (28956510)	V9H-IA (28979248)
V9-IB (28962006)	V9H-IB (28979277)
V9-IS (28962007)	V9H-IS (28979279)

## Location and illustration of Inlet valves

The illustration below shows the location of the Inlet valves and also enlargements of Inlet valve A and the Quaternary valve. In ÄKTA™ avant 25, the Inlet valves are labelled **V9-IA**, **V9-IB**, and **V9-IS**. In ÄKTA avant 150, the Inlet valves are labelled **V9H-IA**, **V9H-IB**, and **V9H-IS**. The Quaternary valve is labelled **Q9** in both instruments.



Part	Description
1	Sample inlet valve
2	Inlet valve A
3	Quaternary valve
4	Inlet valve B
5	Integrated air sensor (behind the plug)
6	Inlet port of Inlet valve A
7	Inlet ports <b>Q1-Q4</b> of Quaternary valve
8	Outlet ports from Quaternary valve to Inlet valve A and Inlet valve B

## Instruction

The instruction below describes how to replace a valve module in the instrument.

**Note:** *The illustrations show the principle how to replace a valve. The position of the valve on the instrument and the used type of valve will depend on the valve being replaced.*



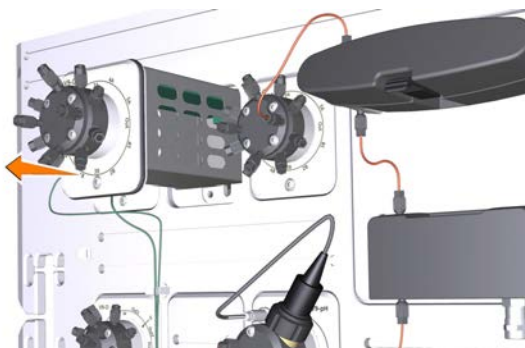
## WARNING

**Disconnect power.** Always switch off power to the instrument before replacing any component on the instrument, unless stated otherwise in the user documentation.

Step	Action
1	Disconnect power from the instrument by switching off the instrument with the <b>Power</b> switch located on the left hand side of the instrument.
2	Loosen the valve module with a Torx screwdriver.

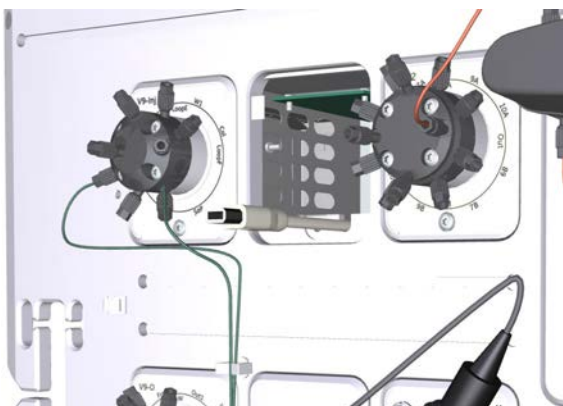


- 3 Remove the valve module.



Step	Action
------	--------

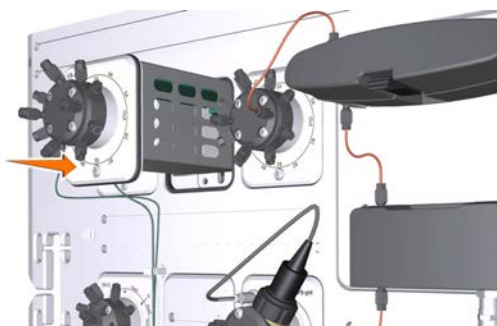
- |   |   |
|---|---|
| 4 | Disconnect the cable and secure it in the slit. |
|---|---|



- |   |  |
|---|--|
| 5 | Connect the cable to the new valve module. |
|---|--|



- |   |                          |
|---|--------------------------|
| 6 | Insert the valve module. |
|---|--------------------------|



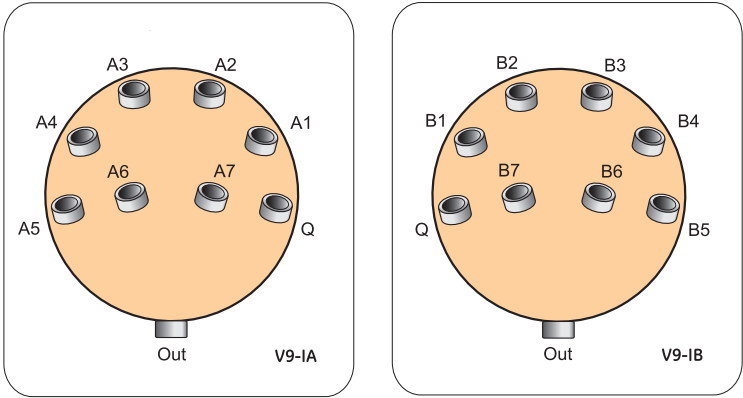
Step	Action
7	Fasten it with a Torx screwdriver.



Connect tubing

Inlet valve A and Inlet valve B

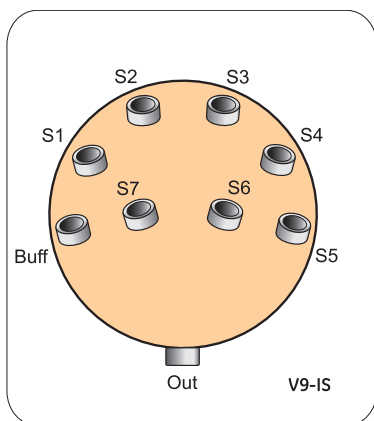
The illustration below shows the ports of Inlet valve A and Inlet valve B.



Port	Description	Port	Description
<b>A1-A7</b>	Buffer inlets of Inlet valve A	<b>Q</b>	Inlet from Quaternary valve
<b>B1-B7</b>	Buffer inlets of Inlet valve B	<b>Out</b>	To the System pumps

Sample inlet valve

The illustration below shows the ports of the Sample inlet valve.



Port	Description
<b>S1-S7</b>	Sample inlets
<b>Buff</b>	Buffer inlet
<b>Out</b>	To Sample pump

Page intentionally left blank



[cytiva.com/AKTA](https://cytiva.com/AKTA)

Cytiva and the Drop logo are trademarks of Global Life Sciences IP Holdco LLC or an affiliate.

AKTA is a trademark of Global Life Sciences Solutions USA LLC or an affiliate doing business as Cytiva.

All other third-party trademarks are the property of their respective owners.

© 2020–2021 Cytiva

All goods and services are sold subject to the terms and conditions of sale of the supplying company operating within the Cytiva business. A copy of those terms and conditions is available on request. Contact your local Cytiva representative for the most current information.

For local office contact information, visit [cytiva.com/contact](https://cytiva.com/contact)

28968645 AC V:4 05/2021