



# Getting Started With Your ReadyCircuit Components

1

## Learn the Available Components

### Sample, Pillow, and 3-D bags

26 bag designs from 250 mL to 1000 L. Sterilized, disposable, with genderless aseptic connectors and various port configurations.

### Tubing Assemblies

79 tubing assemblies including Ys and Ts and various lengths and diameters. Sterilized, disposable, with genderless aseptic connectors.

### Sensor Assemblies

6 sensor assemblies including pressure, temperature, and conductivity. Compatible with SciLog monitors. Sterilized, disposable, with genderless aseptic connectors.

### Filter Assemblies

85 CFF assemblies (hollow fiber cartridges) and 57 NFF assemblies (membrane capsules). Feed retentate, permeate or vent ports depending upon type. Sterilized, disposable, with genderless aseptic connectors.



## Caution – Important for Safety

Wear protective gloves and safety glasses when opening hollow fiber cartridges to prevent contact with the storage solution in the filters. Do not place excessive strain on tubing connection points. Excessive bending or pulling on tubing and fittings can result in leaks of hazardous process fluids leading to injury.

2

## Information that Ensures Success

### Component Handling

Handle and store your unopened ReadyCircuit™ components with care. Avoid rough handling. Store in a cool dry location where components will be protected from physical damage.

### Maintaining Sterility

Use components within their expiration date. Ensure the gamma radiation label is red indicating the ReadyCircuit component was radiated. Wetted parts are guaranteed sterile as long as connector seals are not opened or damaged. Do not remove the seals from the aseptic connectors until you are ready to connect them together.

### Use the Right Components

Ensure you have the proper components to meet your processing objective. Check ReadyToProcess filter part numbers and performance specifications before opening the packaging. For easy and ergonomic setup, use the components with a Cytiva ReadyKart mobile processing station as shown above.

3

## Open Bags, Tubing, Sensors and CCF Filter Bags

ReadyCircuit components are sealed in two plastic bags. To open the outer bag, grip each side of a bag just below the seal and snap the seal apart. Other techniques will cause the bags to stretch rather than open. Repeat this procedure to open the inner bag.



4

## Lay Out Your System Before Making Aseptic Connections

Lay out your system (but do not make aseptic connections) to confirm that you have the necessary components for an operational system and to optimize component supports and tubing runs.

**Helpful Information**—Stage your process components using Cytiva ReadyMate™ Mate connectors, which hold the aseptic connections together without breaking the aseptic seal.

5

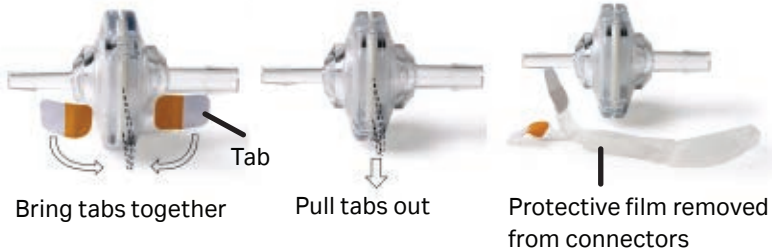
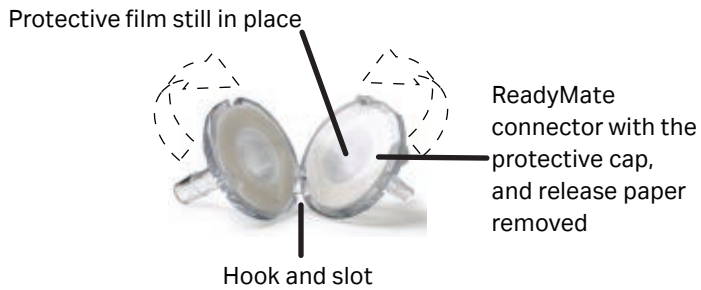
## Ensure You Have the Correct Monitors for Your Sensors

If you are using ReadyCircuit temperature, pressure, and conductivity sensors, ensure you have SciLog BioProcessing Systems SciTemp™, SciPres™, and SciCon™ monitors (part numbers 080-790, 080-690, and 080-590 respectively). Connect sensors to the SciLog monitors using the cables and OEM instructions supplied with your SciLog monitor.

6

## Make the Aseptic Connections

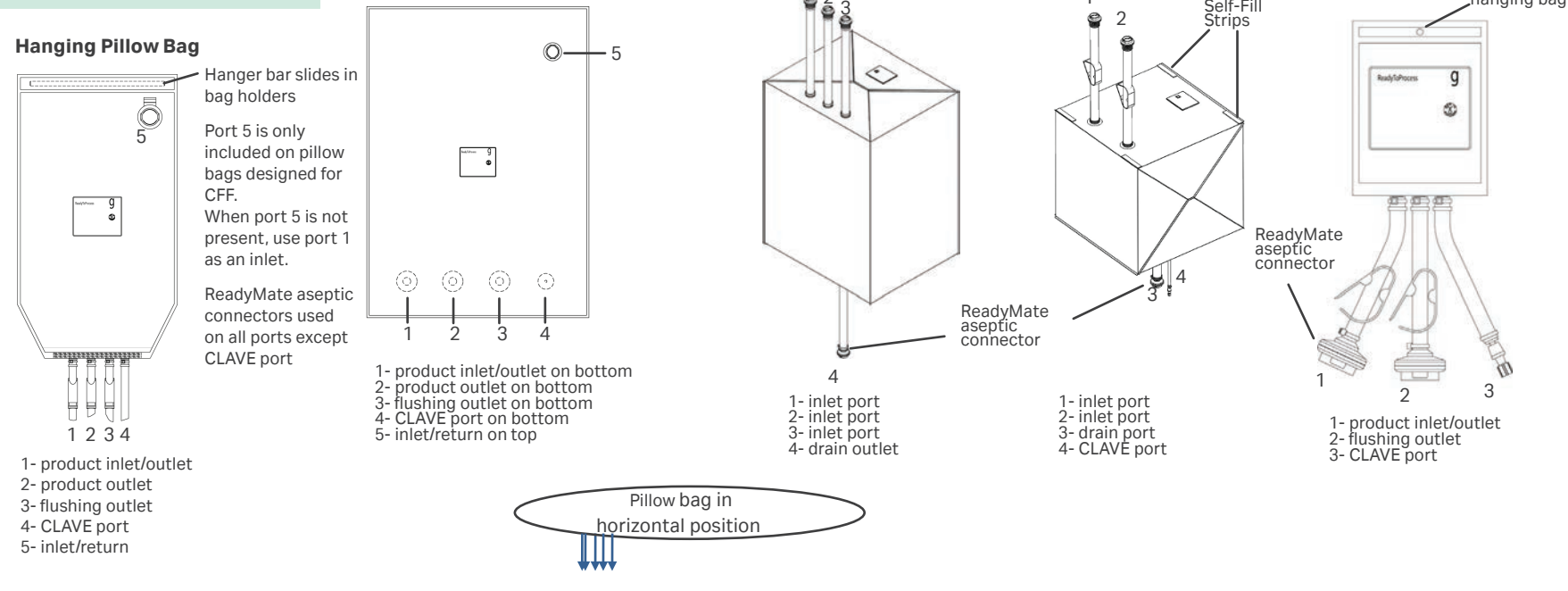
Step	Action
1.	Remove the protection cap, and release paper from the face of each connector. Do not remove or damage the protective film.
2.	Engage the hook of one connector with the slot of the other. Bring the connectors together and press together until you hear an audible click.
3.	Bring the tabs together and pull both tabs out from the connectors until the protective film is completely removed.
4.	Apply a standard BioClamp™, disposable ReadyClamp, or a stainless steel sanitary clamp to the connector assembly to lock it closed.



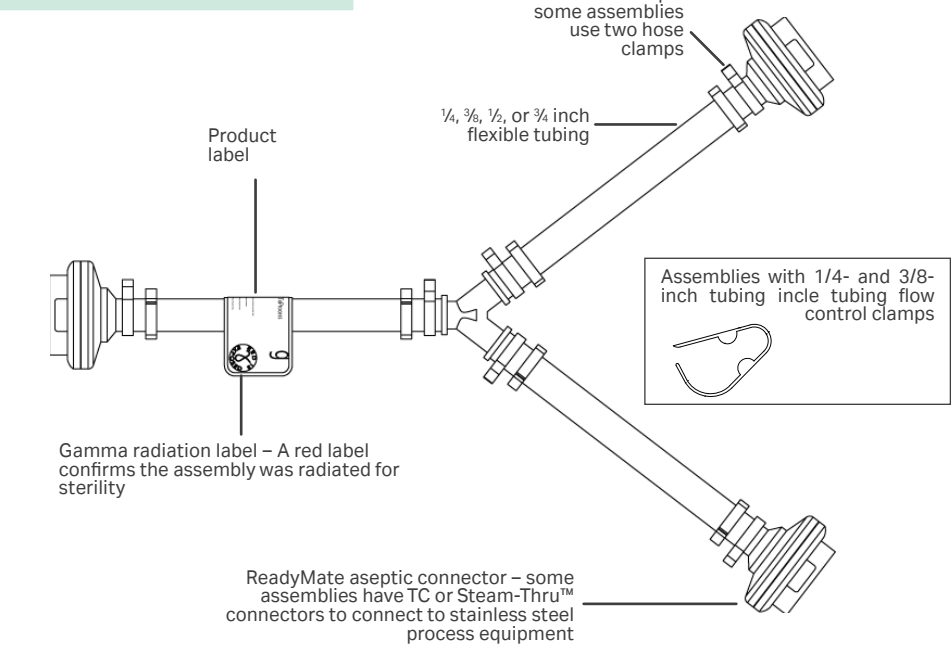
Install BioClamp, ReadyClamp, or stainless steel sanitary connector

**Where to Get Helpful Information**—Download detailed instructions for each type of component by visiting [cytiva.com/readytoprocess](https://cytiva.com/readytoprocess).  
**Where to Get Certificates of Quality**—Download the Certificate of Quality for your ReadyToProcess components at [cytiva.com/certificates](https://cytiva.com/certificates).  
**Where to Get Change Notifications**—Visit [cytiva.com/rsf](https://cytiva.com/rsf).

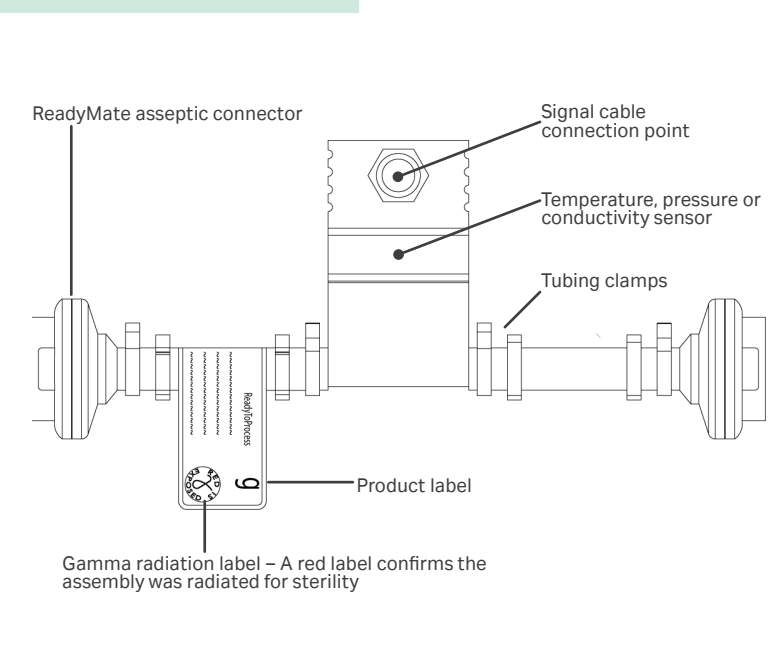
ReadyCircuit Bags



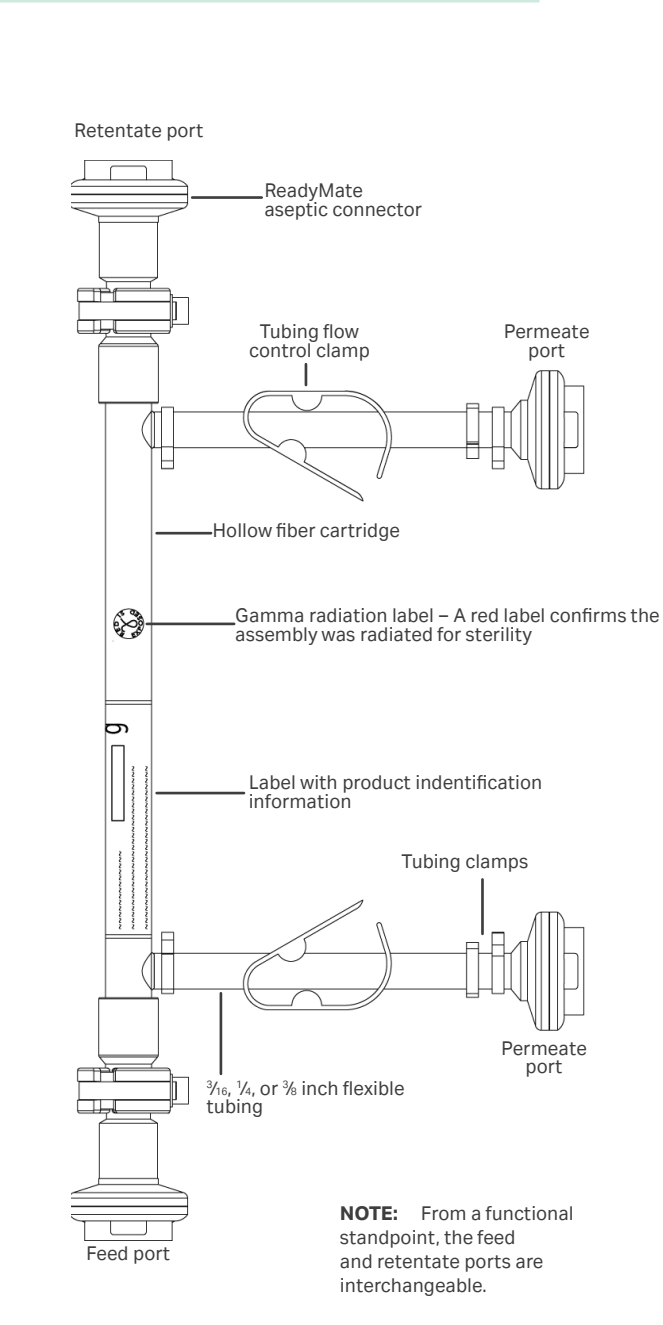
Tubing Assembly



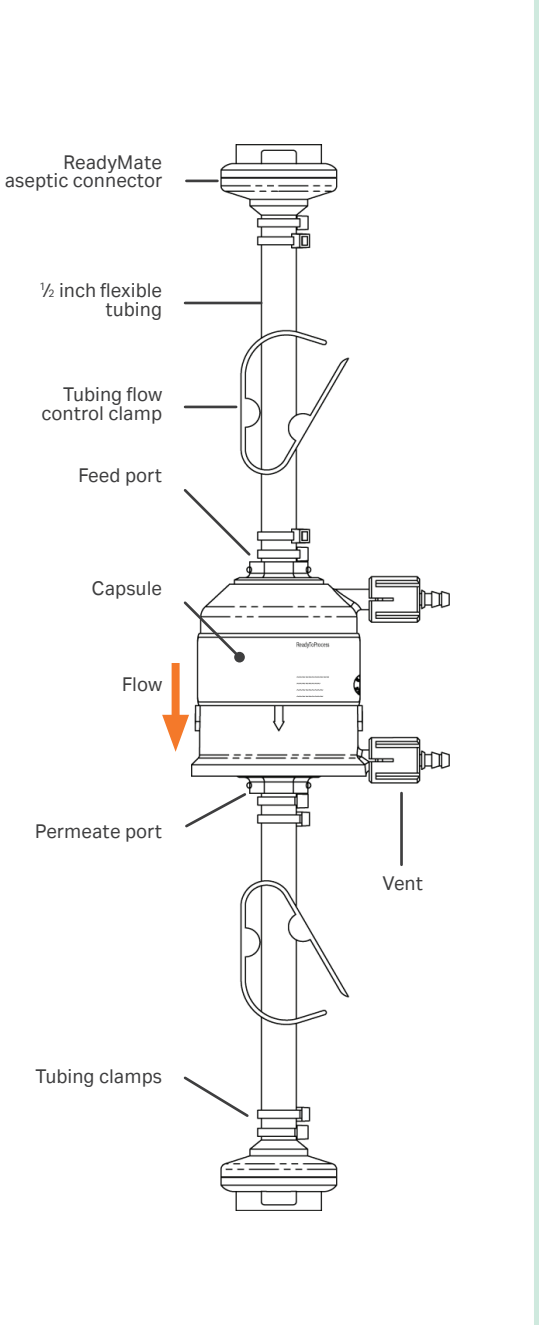
Sensor Assembly



ReadyCircuit CFF Cartridge Assembly



ReadyCircuit NFF Cartridge Assembly



cytiva.com/singleuse