

# ÄKTA ready Gradient Flow Section

Product Documentation

## Table of Contents

<b>1</b>	<b>Manuals delivered with the ÄKTA ready system .....</b>	<b>3</b>
<b>2</b>	<b>General Specifications .....</b>	<b>4</b>
<b>3</b>	<b>Product View .....</b>	<b>6</b>
<b>4</b>	<b>Material Conformity .....</b>	<b>7</b>

# 1 Manuals delivered with the ÄKTA ready system

- 28960345 Operating Instructions
- 28936561 Unpacking Instructions ÄKTA™ ready
- 29042082 Unpacking Instructions ÄKTA ready gradient
- 28938251 Column Trolley User Manual

**Note:** *The documentation included in this binder is only valid for the original state of the ÄKTA ready Gradient Flow Section as when delivered from the factory.*

## 2 General Specifications

### Code Number

- 29021085 Gradient Low Flow Section ÄKTA ready
- 29021086 Gradient High Flow Section ÄKTA ready

### Flow Section Specifications

	Low	High
Tubing diameter (i.d)	6.4 mm	9.5 mm
Pump tubing diameter (i.d)	8 mm	12 mm
Flow rate range	3 to 175 L/h	7.5 to 510 L/h
Total volume	0.055 L	0.116 L
Inlet connector (i.d)	TC 25; 8.4 mm & 6.4 mm	TC 25; 11.4 mm & 9.5 mm
Outlet connector (i.d)	TC 25; 8.4 mm	TC 25; 10.0 mm
No of inlets/outlets	2/1	2/1
No of inlets/outlets <sup>1</sup>	1/0	1/0
Ambient temperature	2°C to 30°C	2°C to 30°C
Liquid temperature	2°C to 40°C	2°C to 40°C
Estimated shelf life	3 years	3 years
Maximum operating pressure	5 bar g (72.5 psi, 0.5 MPa)	
Chemical environment	For details, see Operating instructions 28960345	

<sup>1</sup> When connected to the ÄKTA ready Low/High Flow Kit.

**Note:** For extended specifications refer to the Operating Instructions 28960345.

### Materials of Construction

Wetted parts	EPDM	Ethylene-propylene-diene monomer
	PTFE	Polytetrafluoroethylene
	PEEK	Polyether-ether-ketone
	PP	Polypropylene
		Silicone

## Post-Assembly Treatment

Autoclave

121°C > 15 min

## Applicable Codes and Standards

Design code

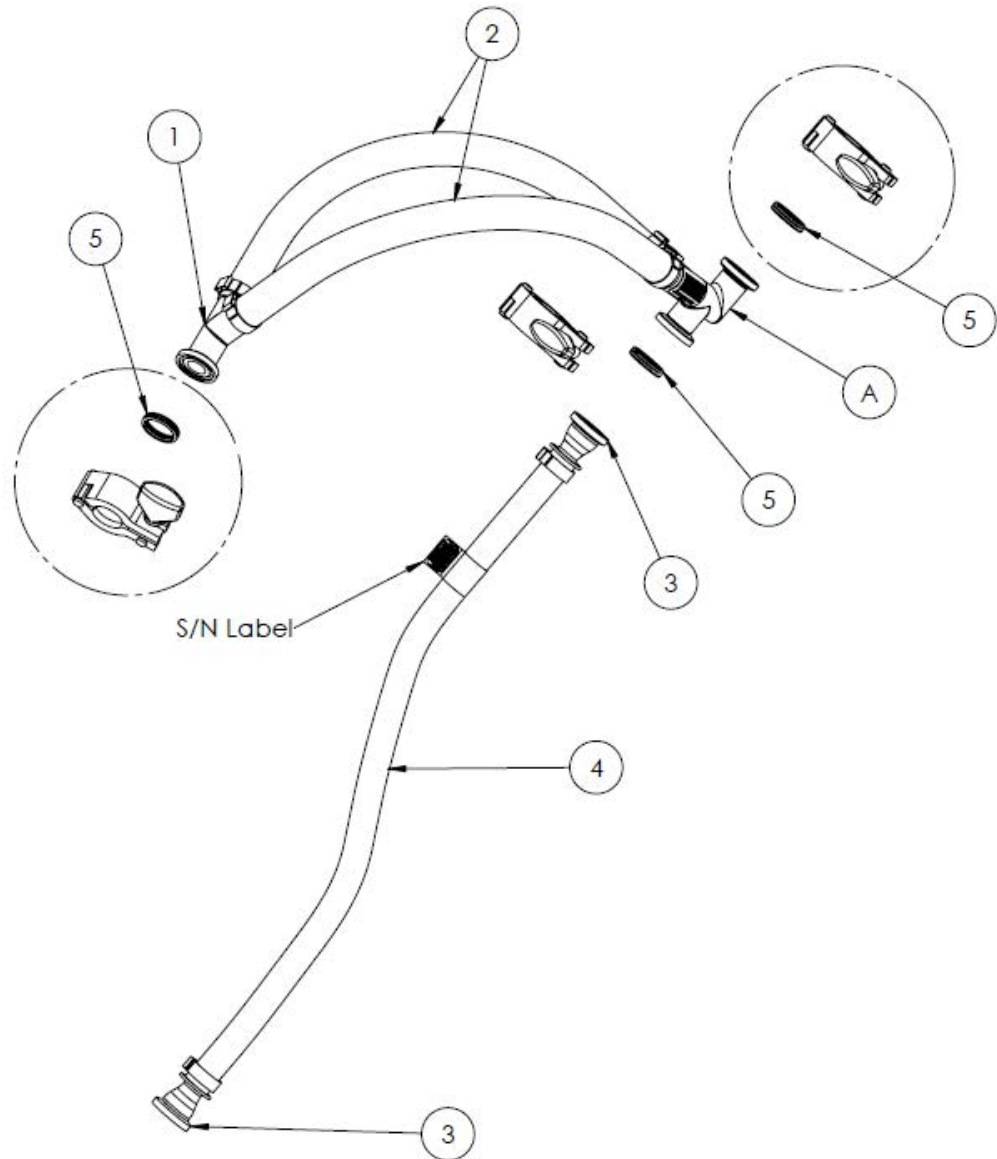
Designed and stress calculated according to Good Engineering Practice

Quality Management System

Certified against ISO 9001: 2008

# 3 Product View

## Gradient Flow Section – main view



## 4 Material Conformity

### Material List

The materials below are used in parts that are in contact with the process fluids.

EPDM	Ethylene-propylene-diene monomer
PTFE	Polytetrafluoroethylene
PEEK	Polyether-ether-ketone
PP	Polypropylene
	Silicone

### Part List

The parts listed below are in contact with the process fluids.

Pos No.	Component		Material
	Code No.	Description	
1 Low	29224601	Y-connection, inlet small	PEEK
1 High	29224602	Y-connection, inlet large	PEEK
2 Low	28929589	Pump Hose, i.d. 8, kit of 2 x L = 307	PTFE + Silicone
2 High	28929611	Pump Hose, i.d. 12, kit of 2 x L = 310	PTFE + Silicone
3 Low	28906900	TC connection 1/4"	PP
3 High	28907078	TC connection 3/8"	PP
4 Low	28920041	Hose i.d. 6.4 o.d. 12.7 reinforced, Clear	Silicone
4 High	28920079	Hose i.d. 9.5 o.d. 15.9 reinforced, Clear	Silicone
5	28909674	TC-Gasket 25/15	EPDM
A Low	29224607	Y-connection, outlet small, 2TC	PEEK
A High	29224608	Y-connection, outlet large, 2TC	PEEK

The Quality system of Cytiva is certified according to ISO9001 and thereby guarantees full control of the product realization process. Cytiva has a controlled process for quality assurance in selection, assessment and evaluation of suppliers where strict adherence to specifications for all materials is the basis.



cytiva.com

Cytiva and the Drop logo are trademarks of Global Life Sciences IP Holdco LLC or an affiliate.

ÄKTA is a trademark of Global Life Sciences Solutions USA LLC or an affiliate doing business as Cytiva.

All other third-party trademarks are the property of their respective owners.

© 2020–2021 Cytiva

All goods and services are sold subject to the terms and conditions of sale of the supplying company operating within the Cytiva business. A copy of those terms and conditions is available on request. Contact your local Cytiva representative for the most current information.

For local office contact information, visit [cytiva.com/contact](https://www.cytiva.com/contact)

29020997 AG V:5 01/2021