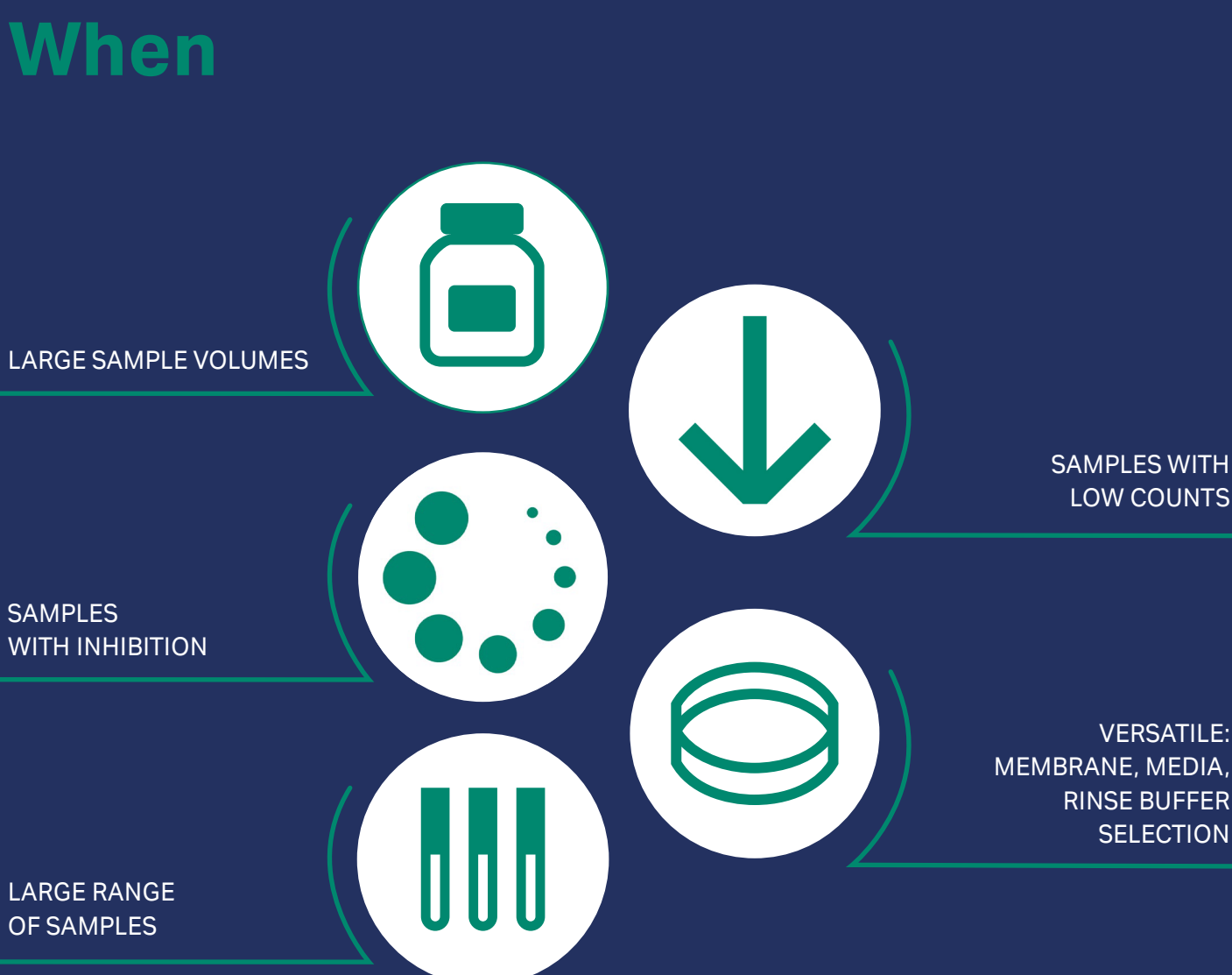
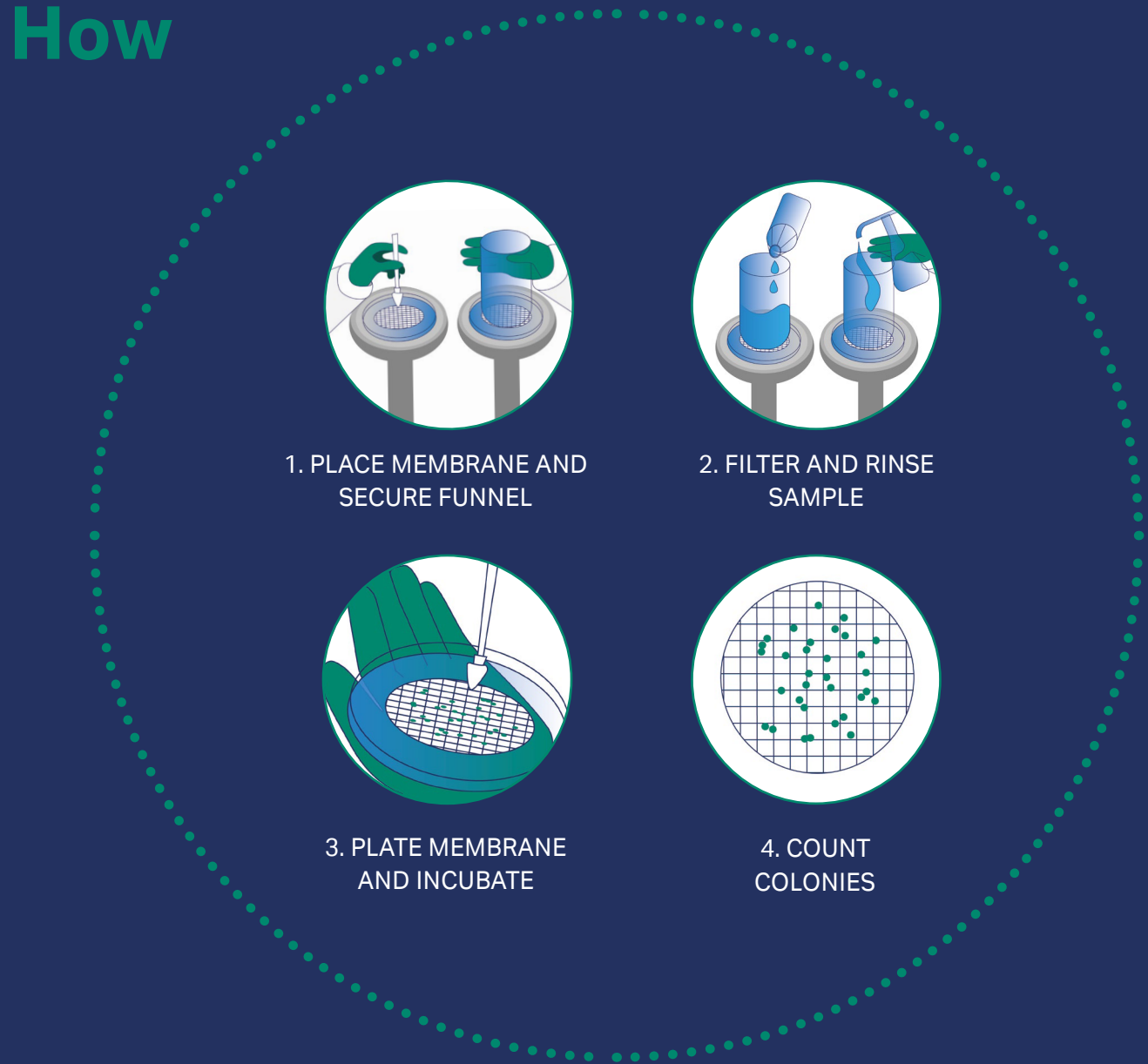


Membrane filtration (MF) technique

The membrane filtration (MF) technique is a versatile and useful method for concentrating organisms from an aqueous sample onto the surface of a filter for reliable detection and accurate enumeration. The filter is then placed on a culture medium for culture and analysis.



MF technique is not suitable with high-particulate samples. For high-particulate samples, choose the Most Probable Number (MPN) method.

Grid lines and color make counting easier

Whatman™ mixed cellulose membranes for MF technique

- Pore sizes: 0.2, 0.45, 0.6, 0.8, 1.2 µm
- Colors: white, green, black
- Grid lines: black, white
- Sterile or non-sterile
- Individual or dispenser pack
- 47 or 50 mm (more sizes non-sterile)

CLICK FOR ARTICLE

www.cytiva.com/whatman

Cytiva and the Drop logo are trademarks of Global Life Sciences IP Holdco LLC or an affiliate. Whatman is a trademark of Global Life Sciences Solutions USA LLC or an affiliate.
© 2021 Cytiva
Contact your local Cytiva representative for the most current information.
For local office contact information, visit cytiva.com/contact

CY18744-21Apr21-IG