

Sustainability

2025 sustainability* impacts



* All data in this document refers to 2025 unless otherwise stated.



Science, **accelerated.**



What you'll find

01

Introducing Cytiva

Who we are

Our impact

Our strategy

Striving for Net Zero

2025 highlights

03

04

05

06

07

09

02

Our view of sustainability

Data is our best friend: carbon calculations

From data sharing to decarbonization together

The biography of our products

10

11

12

13

03

How we make an impact

Sustainable sourcing

Heat, waste, and water

Collaboration

2025 environmental data

14

15

16

17

18

04

Progress we made in 2025

Solvents, packaging, and biobased materials

Renewable electricity and solar energy

Solar energy

Our labs

Building a culture of sustainability

APAC and China spotlight

Associate-led initiatives

Investing in our sites

Helping people and community thrive

Our commitment

21

22

23

24

25

26

27

28

29

30

31

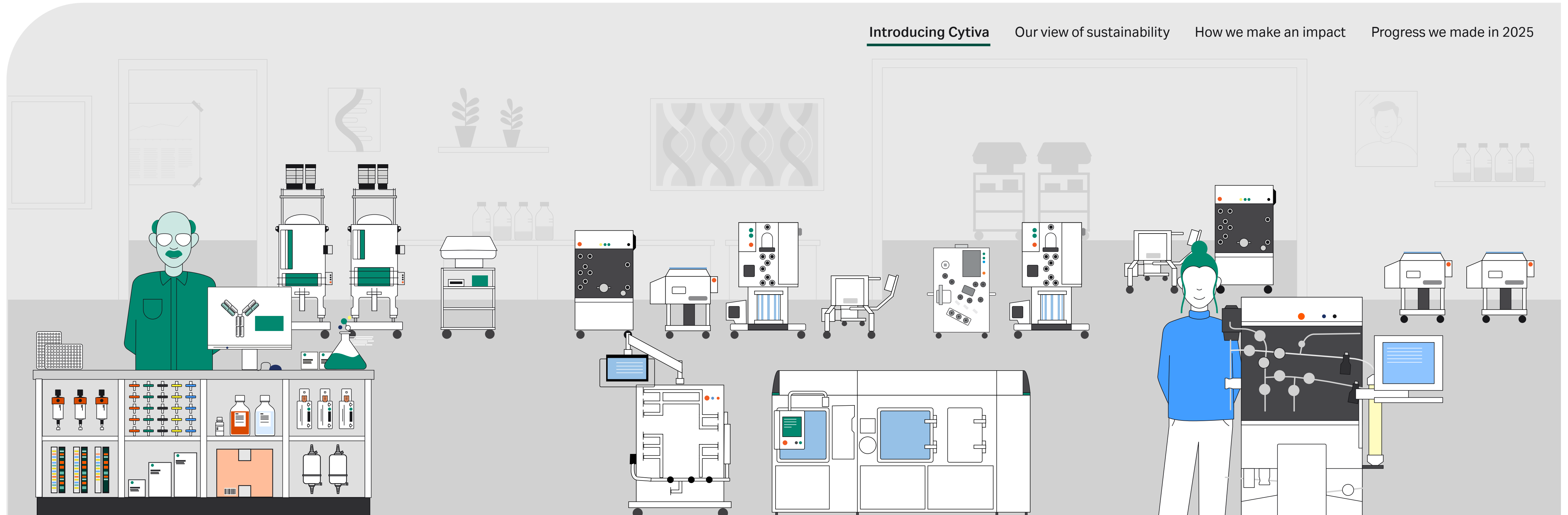


01

Introducing Cytiva

Our customers are developing, making, and delivering new medicines every day. From core biologics to cell and gene therapies to mRNA vaccines, Cytiva works alongside customers to provide the right products, technologies, expertise, and services.





Who we are

Our vision is a world in which access to life-changing therapies transforms human health.

Our mission is to advance and accelerate therapeutics.

Rooted in centuries of experience, we support researchers and biopharma with deep technical knowledge, a broad and robust portfolio, and service that truly cares. From discovery through delivery, we're here to help to advance therapeutics that make a difference.

Cytiva is part of **Danaher**, a global science and technology leader. Along with Danaher's diagnostic and life sciences businesses, we bring an innovative mindset to our collaborations with customers to help them improve patient outcomes.

15 000+

associates dedicated to our mission

41+

countries and territories of operation

23

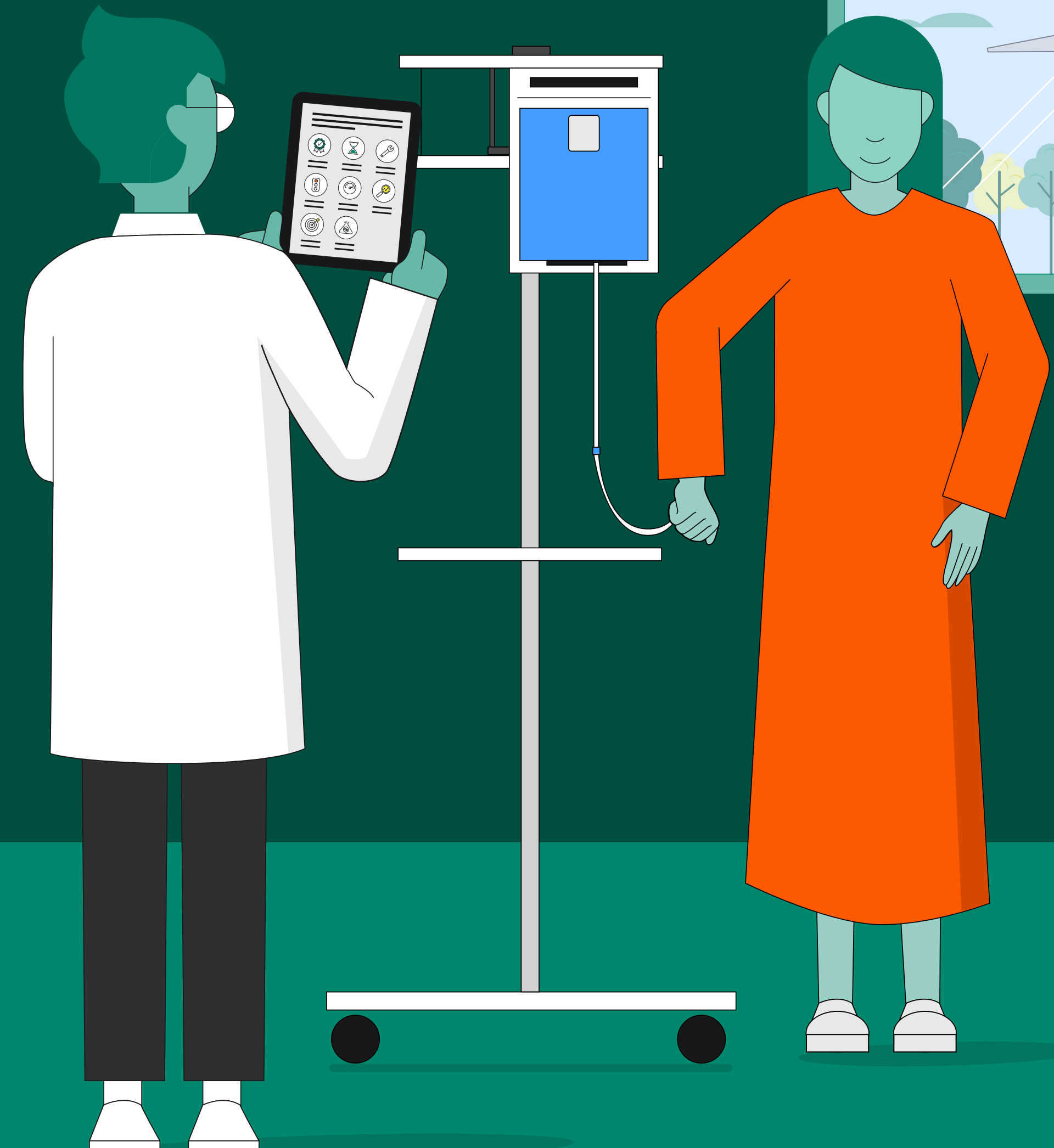
R&D and innovation centers

60+

years in the biopharma supply industry

In 2025,

Cytiva technologies enabled advanced therapies for around 400 million patients* across more than 200 diseases and conditions** worldwide.



* An individual patient may be counted more than once if treated with multiple therapies.

** Diseases and conditions according to WHO ICD classification.

Our strategy

At Danaher, and therefore Cytiva, we view sustainability as a fundamental part of how we conduct responsible business across every aspect of our organization. With this in mind, our sustainability strategy is to help generations of our stakeholders by:

Innovating products that improve lives



Building the best team

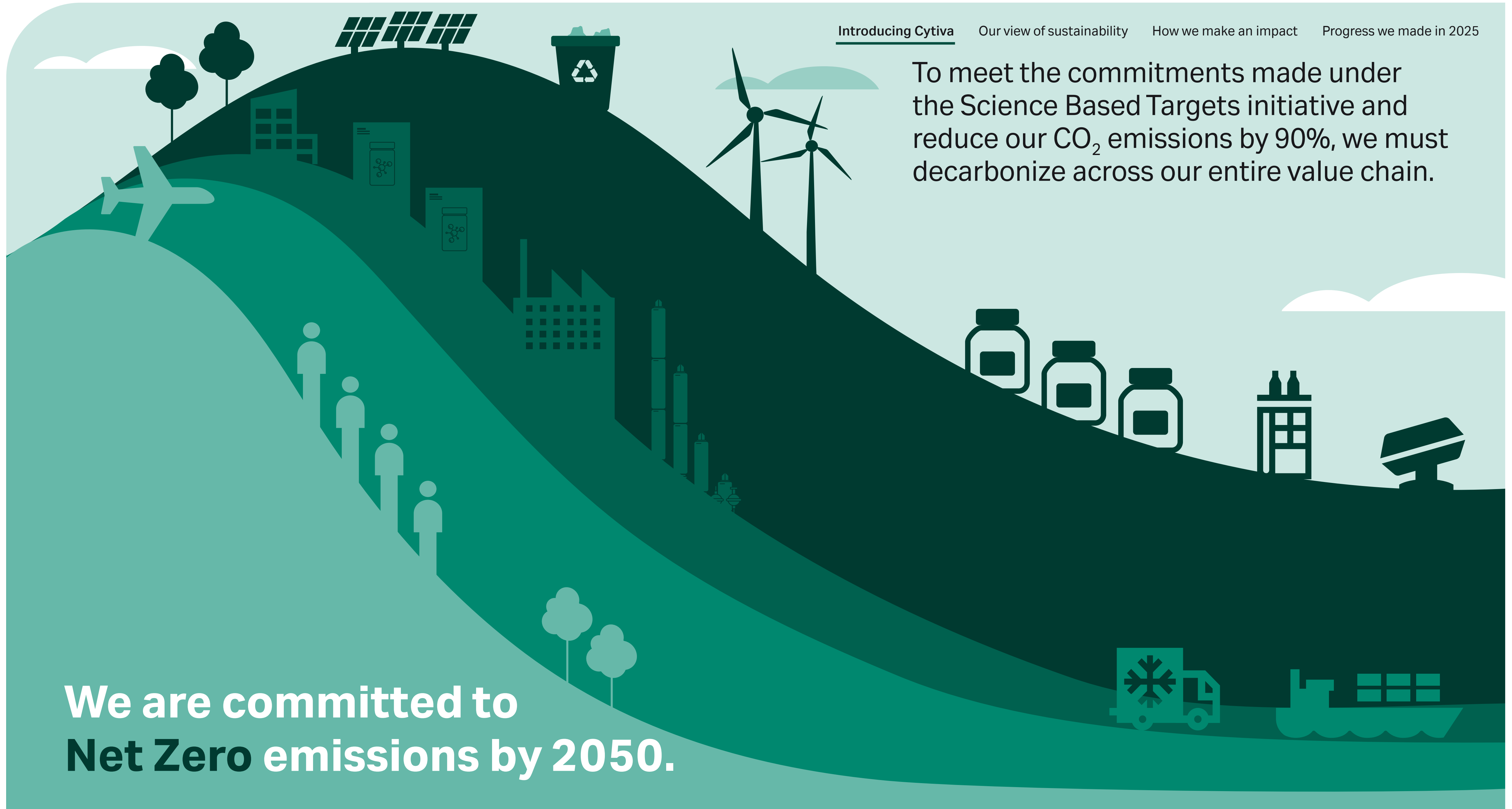


Protecting our environment



To meet the commitments made under the Science Based Targets initiative and reduce our CO₂ emissions by 90%, we must decarbonize across our entire value chain.

**We are committed to
Net Zero emissions by 2050.**



Our contribution to Danaher's net zero target

We intend to split our focus*:

Lead with product transparency and eco-design

by designing in sustainability to reduce impact along the product life cycle.

Reduce the impact of our sites

by focusing on energy efficiency gains, shifting to renewable energy, increasing recovery, and reducing waste at our sites.

Rethink our transportation

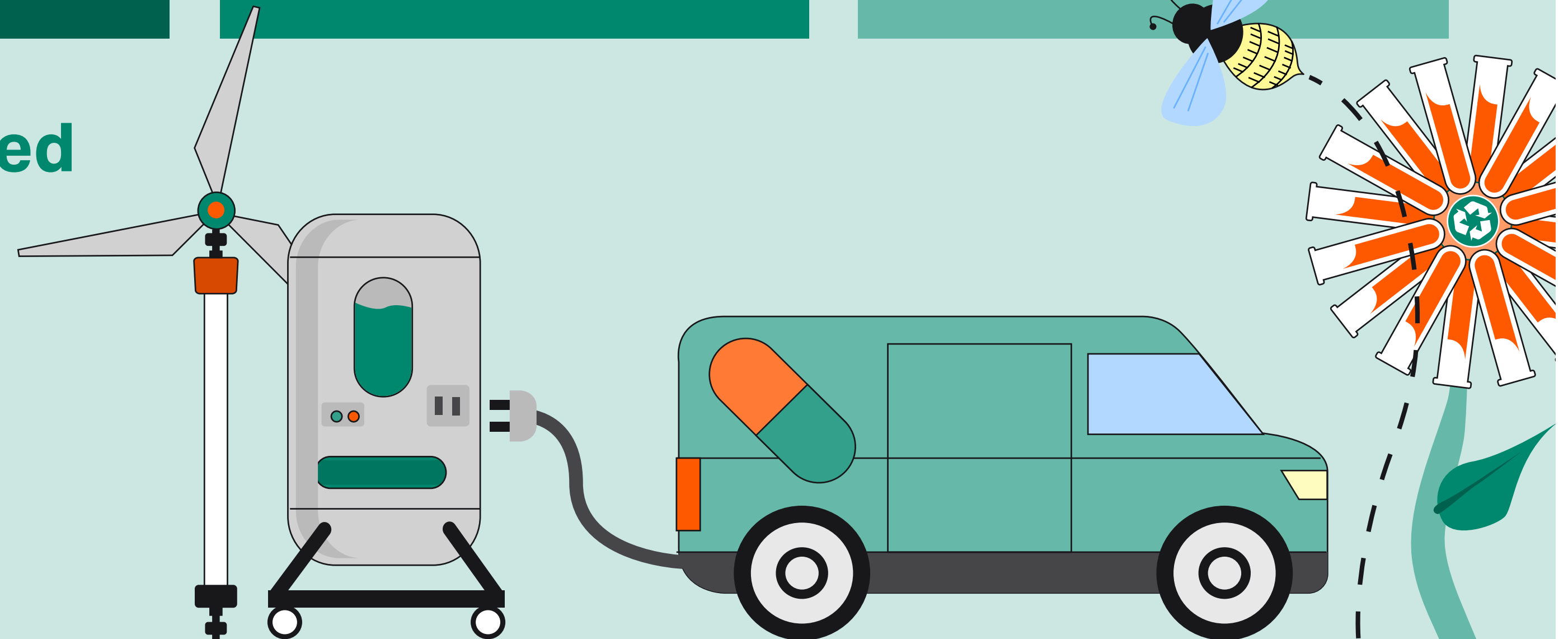
at every point along our supply chain—including going airless, exploring in-region for-region production, alternative fuels, and sustainable packaging.

Build a culture of sustainability

by embedding sustainability in everything we do, across every aspect of our business.

Danaher and Cytiva are committed to Science Based Targets

* These targets and goals are based on current plans and expectations, which are subject to change. They are not promises or guarantees that these will be achieved.

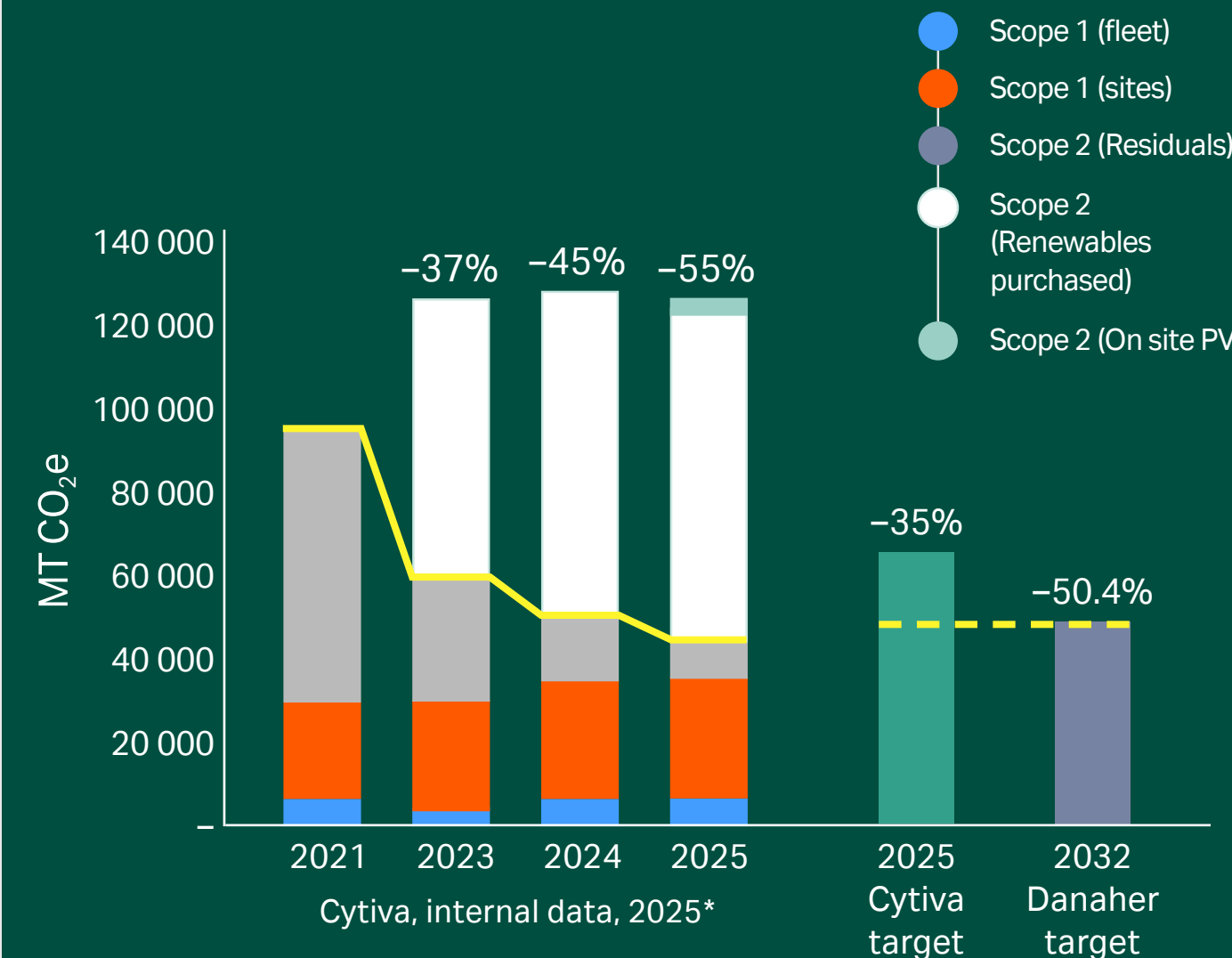


Standout 2025 highlights



Platinum four years in a row

Placing us in the top 1% percent of all 150 000 companies worldwide rated by EcoVadis for sustainability performance.



Reduction of Scope 1 and 2 emissions by 55% since 2021*

Cytiva has met its internal 2032 reduction emission target... seven years ahead of schedule.



Outstanding lab sustainability performance

28 of our labs are My Green Lab certified, and we're independently rated and evaluated with an average of platinum.

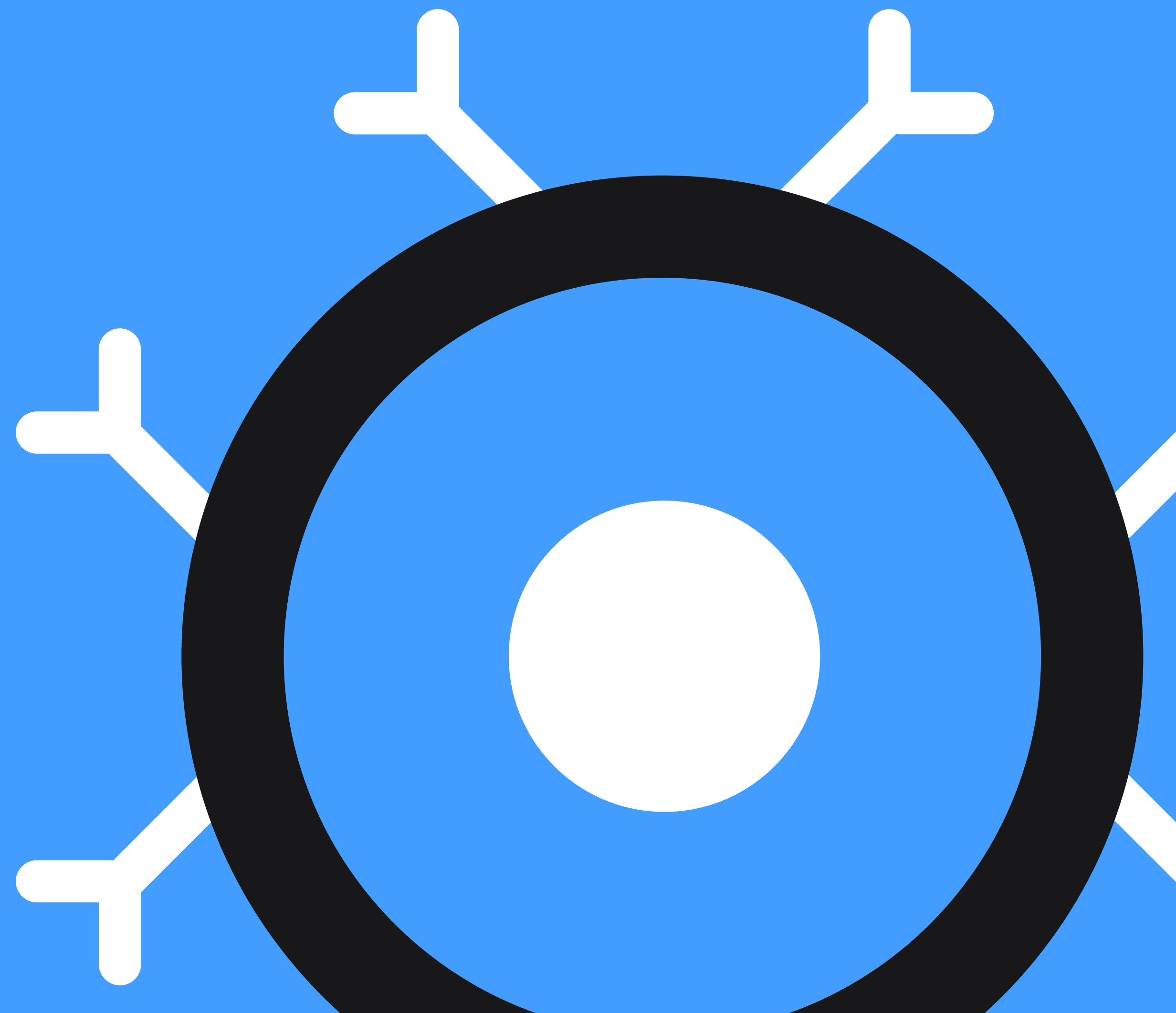
18 other labs are in progress.

* Cytiva, internal data, 2025. This calculation will change based on improving data quality and protocols and has not yet been subject to third party verification.

02

Our view of sustainability

True innovation in life sciences goes beyond discovery. It champions a healthier planet and a stronger future for our communities, associates, and customers.



Data is our best friend: carbon calculations



Turning logistics data into climate action

Automated, near-real-time logistics data gives us the visibility needed to act.

Our in region for region strategy aiming at reducing length of shipments, coupled with air to ocean logistics initiatives, enables measurable progress in reducing logistics emissions—grounded in transparent data and strengthened by customer collaboration.

Year	Average CO ₂ e (kg) per kg shipped*
2023	1.07
2024	1.05
2025	0.80
Average	0.96

* Data timestamp: 2026-06-19

Setting our baseline

To track real progress, we first needed clarity. In 2025, we established an extensive emissions baseline to anchor our reduction journey.

Below is a table of our emission breakdown which will be used as a baseline for measuring future progress.

Source	Sum of total 2024 emissions
Company	17%
Distribution	23%
Products	37%
Sites	23%
Grand total	100%

Sites: Emissions from operating manufacturing facilities, including energy use, equipment, on-site waste, and utilities needed to produce products.

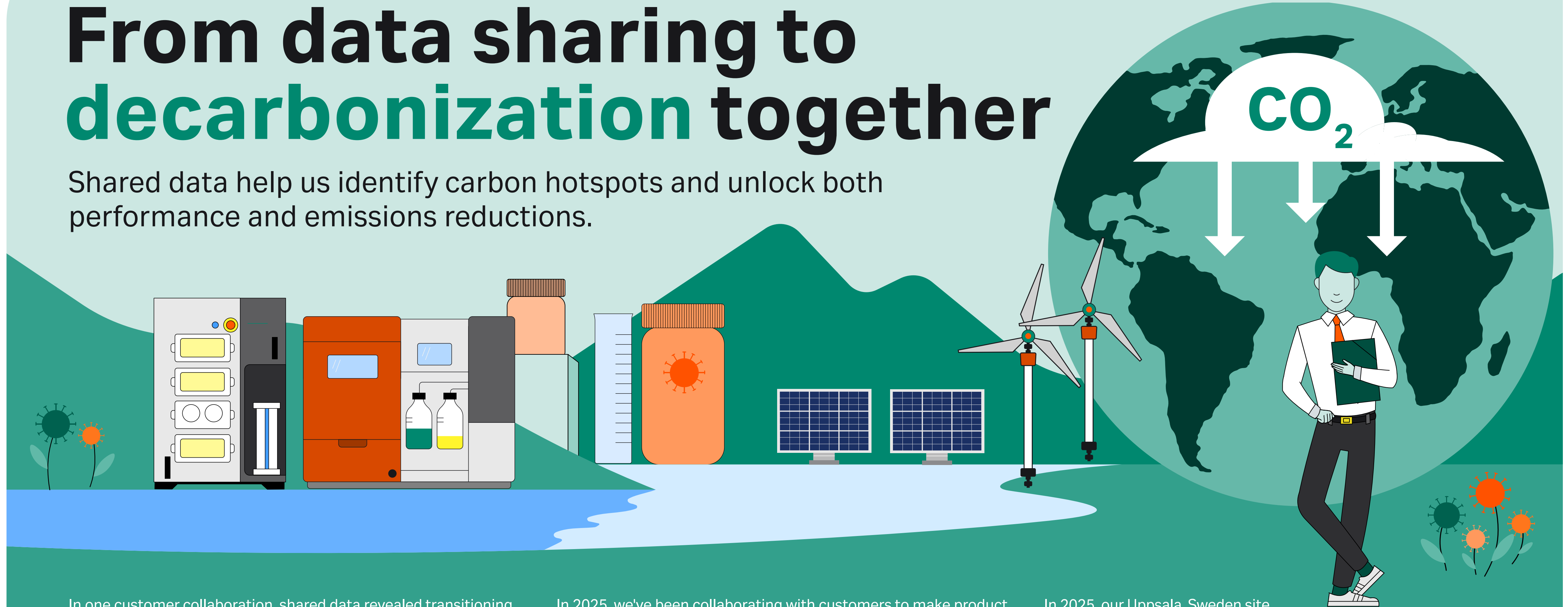
Products: Emissions across the product lifecycle from raw materials and production through use and end-of-life.

Distribution: Emissions from transporting and storing products such as the logistics connecting suppliers, sites, and customers.

Company: Emissions from business operations beyond production such as travel, IT, services, commuting, and corporate activities.

From data sharing to decarbonization together

Shared data help us identify carbon hotspots and unlock both performance and emissions reductions.



In one customer collaboration, shared data revealed transitioning to MabSelect™ SuRe 70 boosted yield while reducing the carbon footprint of their process, showing that performance and decarbonization go hand-in-hand.

To enable decarbonization at scale, we're strengthening the systems behind the progress.

In 2025, we've been collaborating with customers to make product carbon footprint (PCF) data accessible.

Making product-level data accessible continues to be important for our customers. In 2025, we were able to complete PCFs on 16% of our overall business based on revenue, focusing on our top-selling products.

In 2025, our Uppsala, Sweden site completed a Pharmaceutical Supply Chain Initiative (PSCI) sustainability audit with no findings and we continue to deepen engagement across a rapidly evolving sustainability landscape.*

* Externally certified, Pharmaceutical Supply Chain Initiative (PSCI) audit, 2025.

The biography of products

Every product has a story: from the raw materials we choose, through thoughtful eco-design and circularity initiatives that close the loop. Here's how we're embedding sustainability at every stage of the product lifecycle.

Raw materials

Controlling environmental risks while maintaining critical processes is a major environmental and healthcare challenge. The introduction of PFAS-free Supor™ Prime and Pegasus™ Prime filters, demonstrates how material innovation is enabling higher yields, optimized sizing and credible as we work to reduce PFAS across bioprocessing applications.

Ecodesign

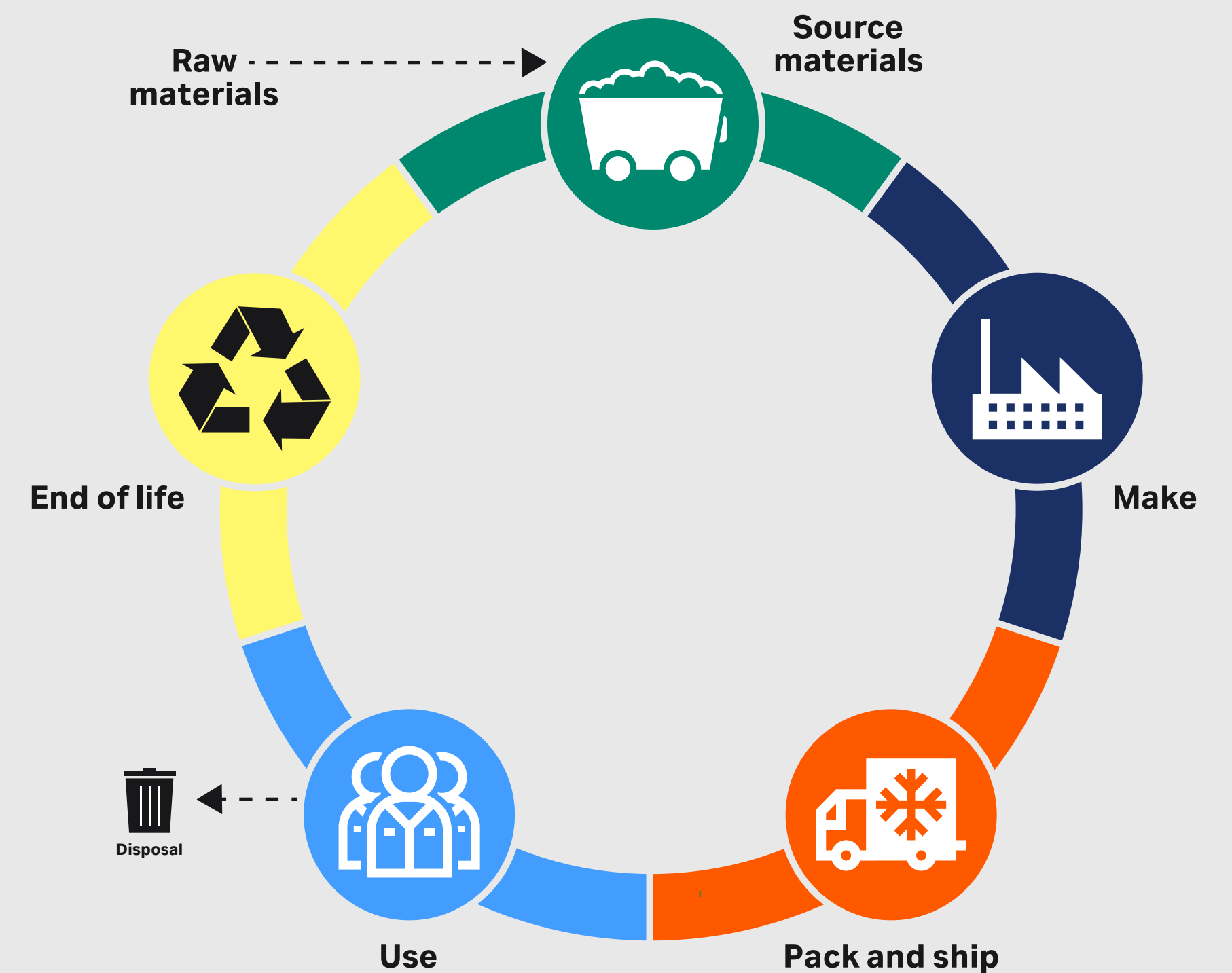
Our 25 mm Whatman™ GD/X, GD/XP, and Whatman Puradisc™ syringe filter housings are made with biobased plastics—same high level of performance, now certified with ISCC PLUS.

Take back

We have partnered with Polycarbin to improve recycling of all brands of single-use plastic lab consumables to help customers divert waste from landfills, reduce environmental impact, and track progress in real-time with ISO-compliant sustainability data.

Circularity

In collaboration with the University of Wisconsin—Madison, we tested Solvent-Targeted Recovery and Precipitation (STRAP) recycling on mixed-material single-use bio-bags, successfully recovering high-purity polyethylene for reuse. With promising economics and environmental performance, we are now evaluating scale-up for commercial bioprocess plastic waste.



03

How we make an impact

Our products enable the delivery of life-saving therapies. And because healthy patients depend on a healthy planet, we're committed to sustainability every step of the way.

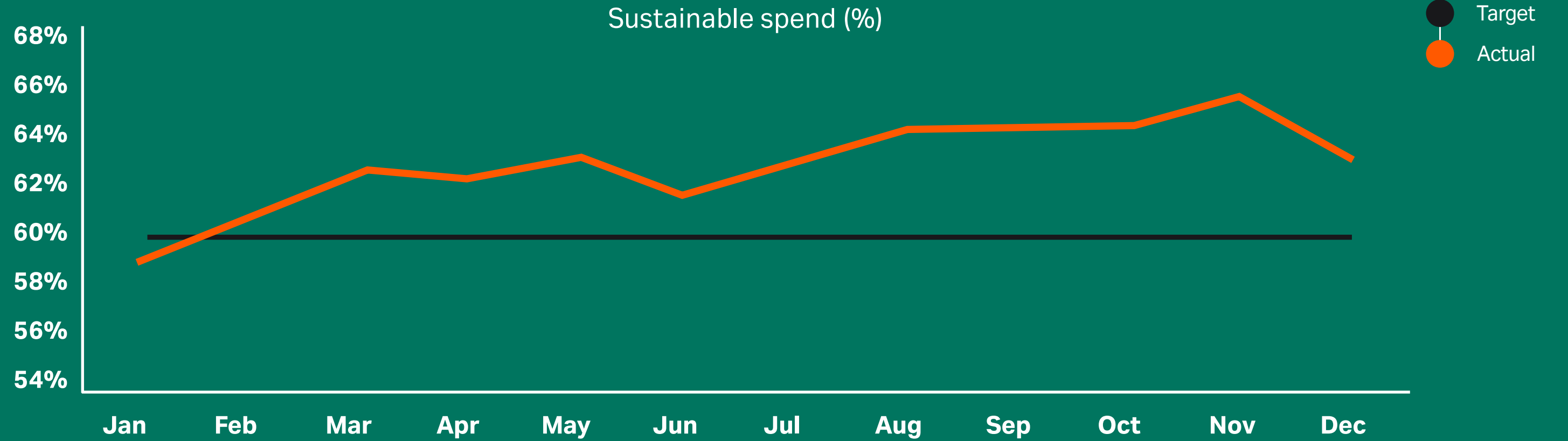


Sustainable sourcing

Impact extends far beyond direct operations. Most of our carbon footprint sits in our supply chain. That's why, whenever possible, we're increasing sustainable spend, driving real progress in tackling our Scope 3 emissions.

Find more in our **Sourcing Sustainability program supplier handbook**.

Our 2025 progress at a glance



Sustainable spend is the portion of total procurement spend directed to suppliers that meet our defined sustainability performance criteria.

EcoVadis

A key cornerstone of our Sweden AB **EcoVadis** rating is our sourcing sustainability program, providing a standardized, data-driven ESG assessment for us and our suppliers.

For the fourth year in a row, Cytiva Sweden received a platinum rating, putting us in the top 1% of all companies globally.

Collaborating with our suppliers

Our second Supplier Sustainability Day took place in Stockholm, Sweden in 2025. We believe it strengthened supplier engagement by shifting from one-way communication to active collaboration. The event enabled alignment on expectations, sharing of best practices, and recognition of supplier leadership.

Environment	Ethics	Labor and human rights	Sustainable procurement
-------------	--------	------------------------	-------------------------

6 workshops	71 Net Promoter Score (NPS) score	86 suppliers
-----------------------	---	------------------------

Our operations

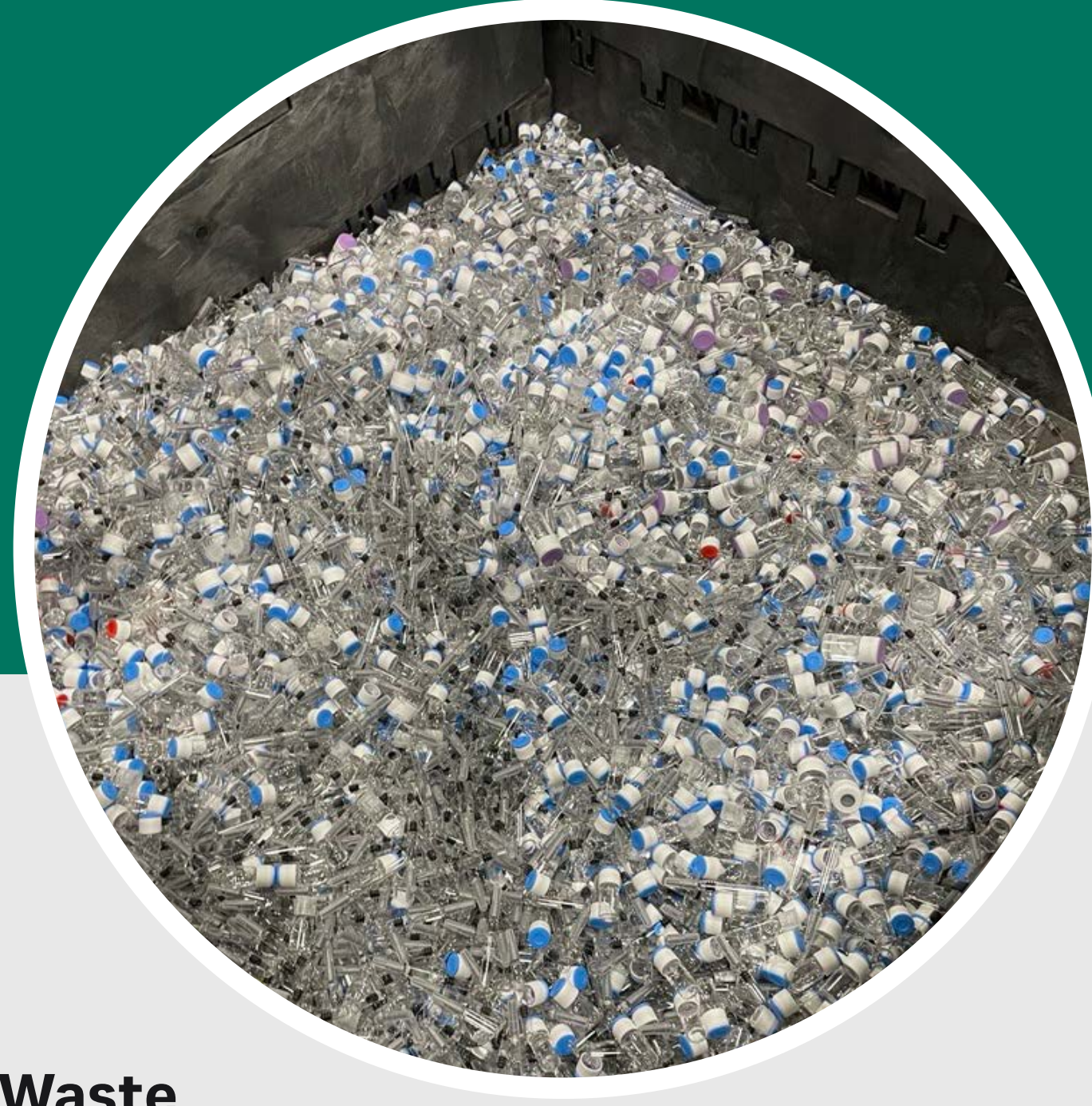


Heat

Using renewable district heat where conditions allow, we're transitioning on-site heating from fossil fuels to renewable fuels and electric heat pumps at our Umeå and Uppsala manufacturing sites, reducing emissions while improving long-term energy resilience.

100%

We implemented 100% renewable district heat in Uppsala and Umeå, Sweden in 2025.



Waste

We're working toward closing the loop on waste. By 2030, we aim to divert 90% of our direct, non-hazardous waste away from landfill and incineration without energy recovery.

80.4%

of non-hazardous waste was diverted to recycling and incineration with energy recovery in 2025.



Water

We're working on improving water efficiency because water is a vital shared resource, and using it responsibly is essential to the communities we operate in and the future we're helping to build.

6.6%

reduced water usage compared to 2024.

Cooling our heating

How renewable and recycled heat reduce emissions.*

Not all low-carbon heat is the same, and understanding the difference helps us show how progress is made.



Heat emissions have been reduced by 32% from our baseline year, 2021.

Renewable heat comes from electric heat pumps powered by renewable electricity and from biofuels, replacing fossil fuels with energy sources that can be replenished over time.

Recycled heat, by contrast, makes use of energy that would otherwise be lost, capturing excess heat and heat from waste incineration. By adding an extra waste sorting step before waste incineration, we estimate the emissions from recycled heat was reduced by 62% since 2024. When we reuse energy already in the system, we reduce the need for new fuel altogether.

2025	MWh	Share of total heat
Total heat	238 274	
Total renewable heat	21 343	9%
Total recycled heat	55 243	23%
Other fossil free heat	880	0.4%
Total renewable and recycled heat	76 586	32%

* Cytiva, internal, 2025.

Water

We're striving to reduce absolute water use by 15% for our most at-risk sites by 2030.

We continue to use the DBS toolkit to find opportunities for water reduction across our operations.



In 2025,

we reduced our water use across all manufacturing sites by 6.6% from 2024.

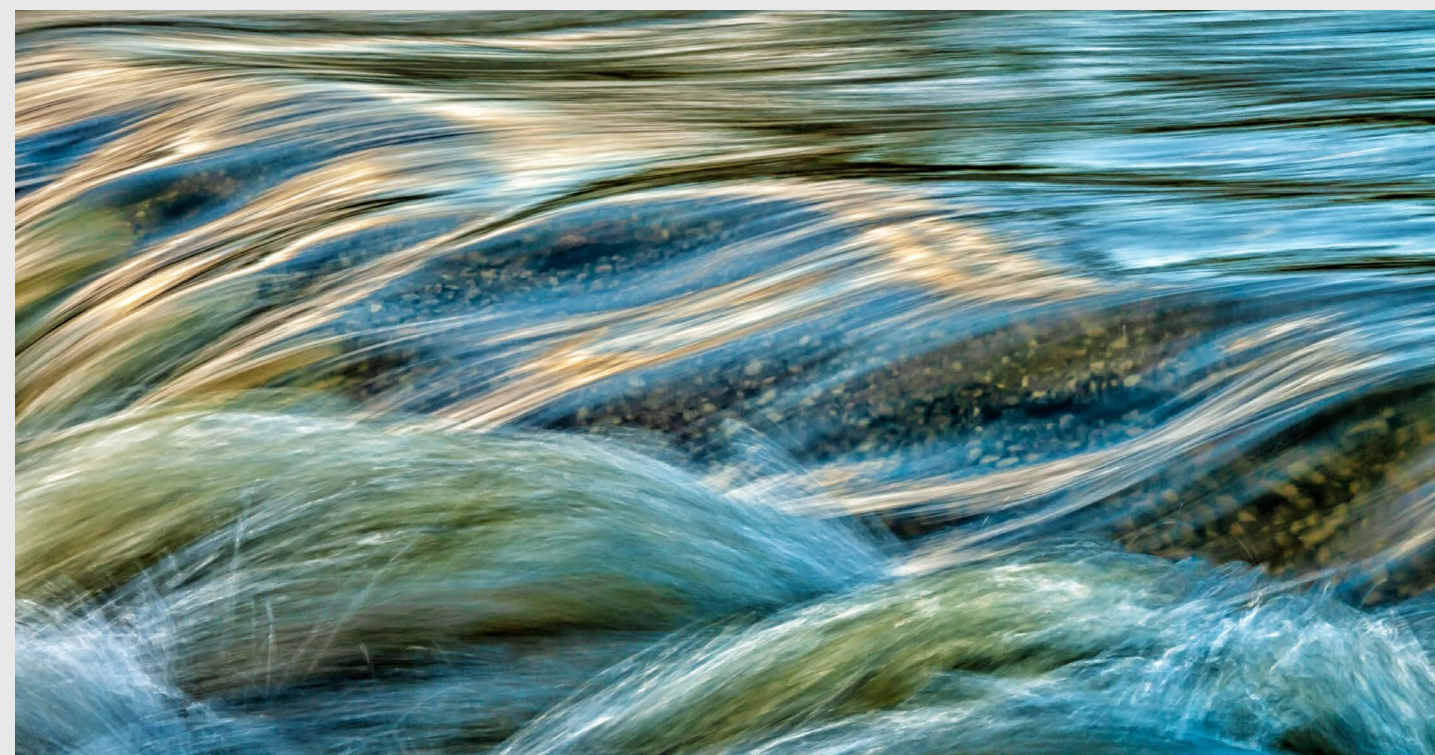


213 000

cubic meters in savings implemented this year, equivalent to the annual water use of over 500 homes.

Double the volume doesn't mean double the water

Our associates at Pune, India doubled their production volume in 2025, but worked hard to save water. The site used 29% less water than in 2024.



All data shared is internal Cytiva data, 2025.

Efficiency that flows

Our Westborough, US site reduced current total water usage by 60% through realignment of their water purification systems, improving their efficiency.



Every flush counts

Our associates in Beijing, China installed a tank to capture and recycle wastewater from the Reverse Osmosis (RO) system for toilet flushing, saving four tonnes of tap water per day.





Collaboration

is a non-negotiable key to success in sustainability. Only by teaming up with our suppliers and customers can we effectively cut emissions throughout the value chain. Sharing data and ways of working allows us to make business decisions that benefit both the environment and society, leading to a healthier planet and a better future for generations to come.

Emmanuel Abate

President, Genomic Medicine, and Head of Sustainability



Environmental data*

Cytiva included all manufacturing sites and any site that is greater than 2000 m² in which we have operational control. Combined, these sites make up make up over 95% of Cytiva's Scope 1 and 2 CO₂ emissions.

	2023	2024	2025
Total GHG emissions, Scope 1 and 2 (tonnes CO₂e)	62 421	54 225	44 380
Scope 1	29 469	34 477	35 032
Scope 2	32 952	19 748	9 347
CO ₂ intensity (kgCO ₂ /k/USD)	9	8	6
CO ₂ intensity compared to 2019 (%)	-70%	-72%	-79%
CO ₂ absolute improvement compared to 2019 (%)	-34%	-42%	-53%
Total energy use (kWh)	429 459 268	468 272 369	461 791 774
District heating and cooling	26 568 103	27 526 077	22 015 430
District steam	62 983 000	62 950 000	55 804 000
Electricity (total purchased)	188 484 073	200 871 041	201 374 472
Non renewable electricity (purchased)	31 830 817	19 394 939	242 760
Renewable electricity (purchased)	156 653 256	181 476 102	201 131 712
Renewable electrcity (generated)	170 806	699 008	1 889 091
Diesel fuel	246 891	224 983	501 286
Gasoline	3952	4573	1571
Natural gas	128 024 123	144 566 130	153 404 464
Propane	2 582 692	4 647 218	1 251 100
Energy intensity (kWh/kUSD)	60	68	62
Energy intensity compared to 2019 (%)	-43%	-35%	-40%
Total energy consumption change (%)	24%	36%	34%

	2023	2024	2025
Total water withdrawal (by cubic meters)	2 830 351	2 788 656	2 598 617
Purchased/municipal source	2 507 098	2 488 547	2 293 357
Groundwater	323 253	300 110	305 259
Water intensity (m ³ /kUSD)**	0.39	0.40	0.35
Water intensity improvement (%)**	-54%	-52%**	-0.23%
Total waste generated (metric tons)	24 090	18 824	20 894
Hazardous waste disposed—incineration	202	193	532
Hazardous waste disposed—incineration with energy recovery	5670	4978	4145
Hazardous waste disposed—landfill	5204	1577	101
Hazardous waste diverted—recycled	1612	1326	1834
Non-hazardous waste disposed—incineration	63	27	85
Non-hazardous waste disposed—incineration with energy recovery	2654	2557	2595
Non-hazardous waste disposed—landfill	2846	1980	2716
Non-hazardous waste disposed—recycled	5839	6186	8886

* Updated energy conversion factors, emission factors, and waste due to a new reporting platform resulting in changes to earlier reported energy and emission data for 2019 to 2025.

** Cytiva, internal data, 2025.

213 000

cubic meters in water savings implemented this year, equivalent to the annual water use of over 500 homes

6.6%

absolute water reduction since 2024

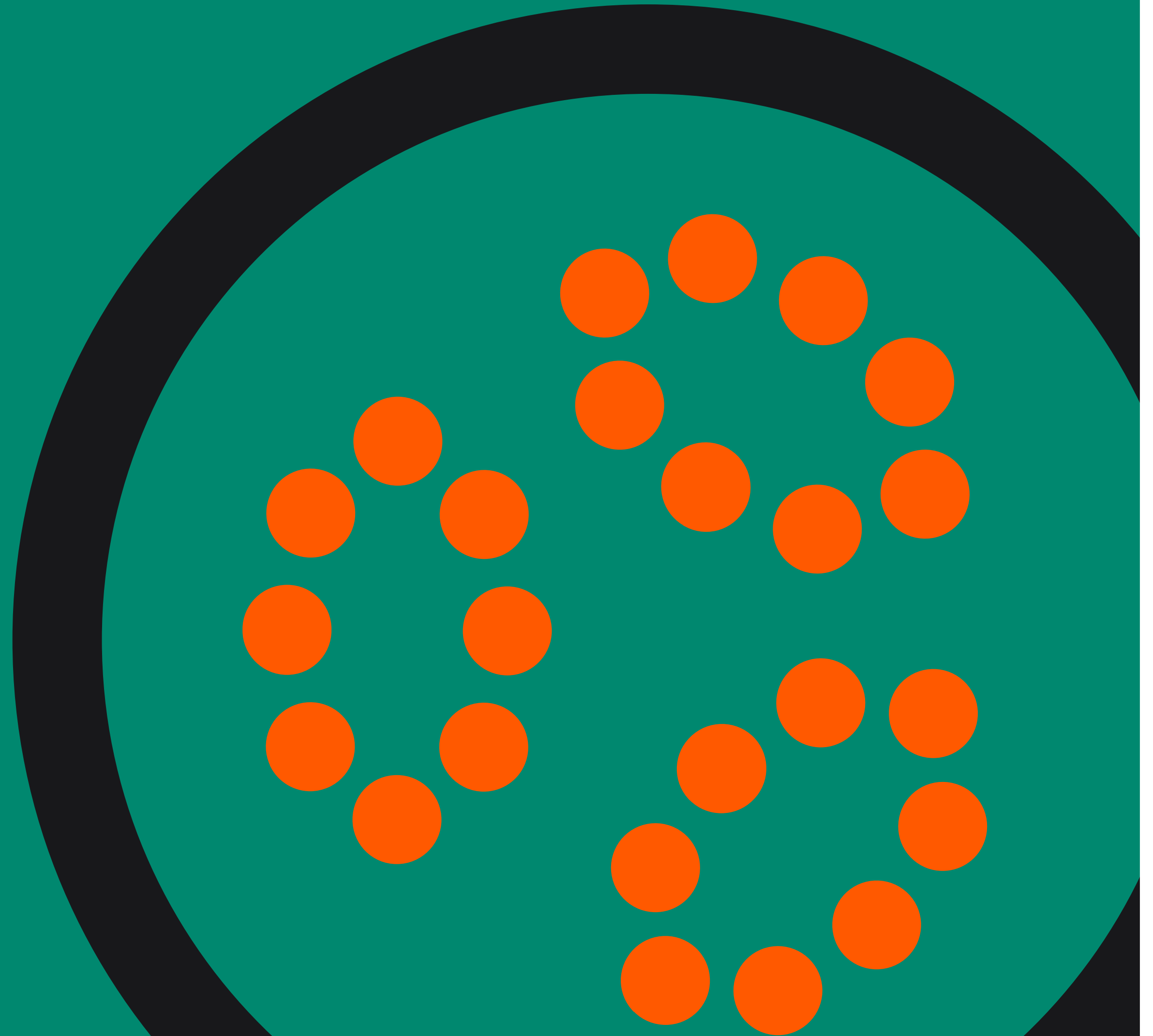
80.4%

of non-hazardous waste was diverted to recycling and incineration with energy recovery in 2025

04

Progress we made in 2025

Sustainability isn't just about ambition, it's about action: by assessing our sites and embedding sustainable practices across operations, we move the needle on resilience, efficiency, and long-term growth.



Materials, used better

We're rethinking the materials we use and how we manage them: from recovering and reusing solvents to optimizing packaging for lower emissions, to transitioning lab filtration products to certified biobased plastics.



Solvent recovery

Our Uppsala, Sweden site is advancing circularity by recovering and reusing solvents and investing in further improvements of our recycling capabilities. In 2025, 74% of the total solvents used in Uppsala (by weight) were recycled or reused.

17 000

tonnes of CO₂ savings in 2025

Packaging

By reviewing and optimizing transportation and material use across our filtration packaging, we identified significant emission savings. We have found opportunities to reduce cardboard quantity with bulk packaging.

60%

less cardboard by switching to bulk packaging for 5-inch filters

Biobased plastics

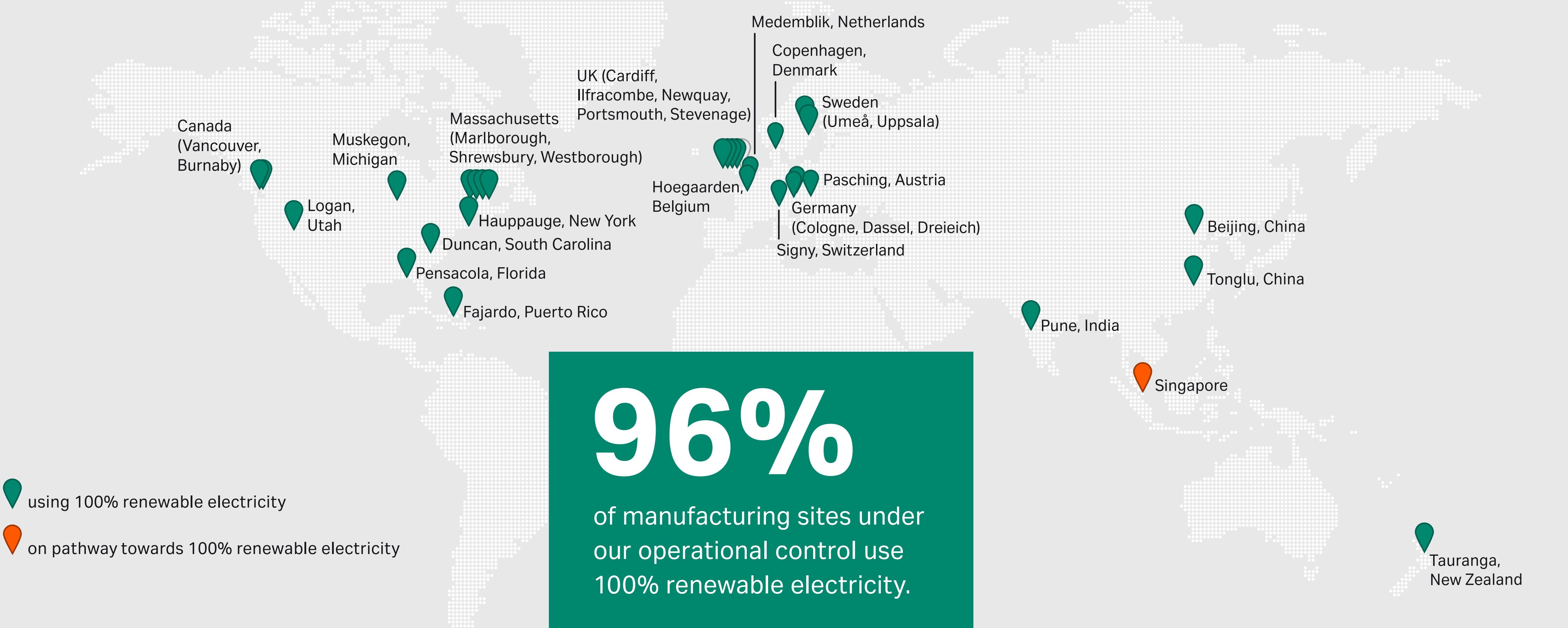
Many of our 25 mm syringe filters now contain biobased plastics—same high performance you expect high level of performance you already expect from the Whatman™ brand, now with ISCC Plus certified biobased plastics.

113

lab filtration products with biobased polypropylene housing

Renewable electricity usage

Transitioning to renewable electricity is central to reducing our operational emissions. Across our global footprint, the majority of our manufacturing sites now run on 100% renewable electricity; a milestone that reflects years of deliberate investment in cleaner energy sourcing.



Solar energy

On-site solar is one of the most impactful forms of renewable energy because it adds new clean power to our operations.

Unlike purchasing existing renewable electricity, on-site solar creates additional renewable generation, cutting emissions at the source, reducing reliance on the grid, and building long-term energy resilience where we operate.



Turning up the watts: Newquay joins the renewable energy mix

In 2025, the Newquay, England installation became a major step forward, nearly tripling our global on site renewable generation. Total on-site production rose from 699 MWh in 2024 to 1889 MWh.

Our labs: My Green Lab certification program

The certification of our labs by My Green Lab (MGL) drives measurable sustainability improvements across our laboratory operations, combining third-party certification with real-world energy and cost savings.

We've continued working with MGL and Impact Labs to expand our certified labs in 2025.

We've maintained an average award of Platinum.

Every Fast Trak™ lab is certified, certifying, or has plans to become certified.

46

labs engaged across four continents and 14 sites

76%

Platinum average rating

100%

engagement of Fast Trak™ organization



Fast Track Validation Services Shanghai

Our Fast Trak labs are specialized centers designed to accelerate biopharmaceutical development and manufacturing. Through improvements implemented during the certification process, the Shanghai, China site identified potential annual energy savings of up to USD 69k and a reduction of approximately 324 tCO₂ emissions.

Building a culture of sustainability

Fleet electrification

We're cutting emissions by changing how we use company vehicles.

By reducing our use of petrol and diesel cars and expanding electric and flexible travel options, we cut our use of internal combustion engine company cars by **25% globally in under a year**, including a 57% drop in the US and a 15% reduction in Europe.



Cardboard converter: Circularity at Burnaby

Our Burnaby, BC, site has been reducing the need for virgin packing material and the amount of cardboard needing to be recycled.

This project reduced site waste by 950 kg and saved approximately \$3500 CAD in 2025.

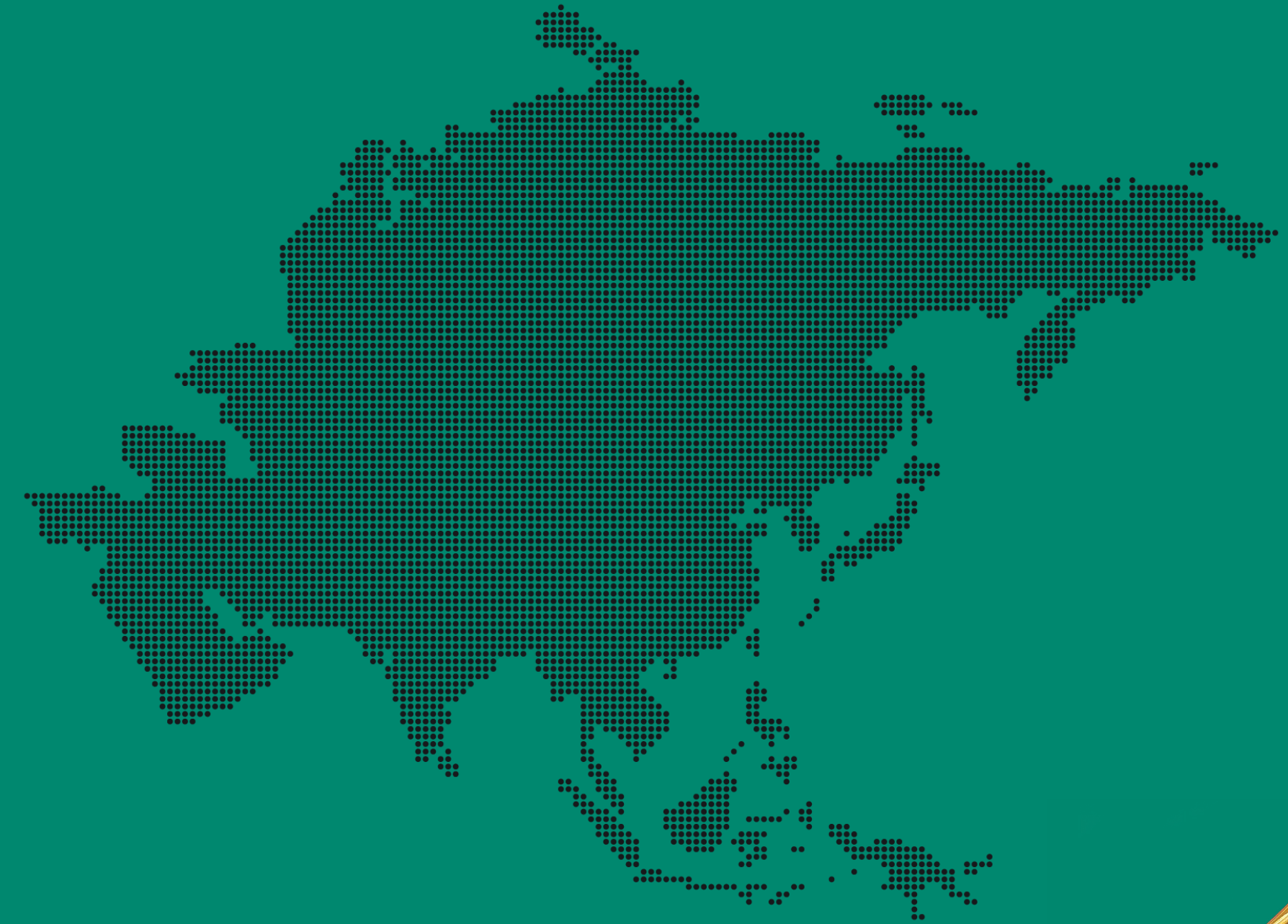
Being less wasteful with our waste

Since 2021, we've been improving how our energy provider in Uppsala, Sweden treats public waste before it becomes energy for Cytiva. Household waste is now sent through an advanced sorting facility, where near-infrared technology removes plastics before incineration.

Since 2024, this single change has cut fossil-based CO₂ emissions from recycled heat by 62%, delivering cleaner heat through smarter systems.

Asia-Pacific and China highlights

The commitment and achievements of the APAC region to sustainability cannot be overlooked. 2025 marked a year of recognition for the region's sustainability efforts.



Reducing energy consumption at Pune

In 2025, the Pune, India site set out to cut in energy use by 6%. A review of electricity consumption revealed persistent power-factor penalties, signaling both inefficiency and avoidable costs. A compensator was installed, eliminating inefficiencies and reducing hidden transmission losses. As a result, average monthly **electricity use fell by ~40%**.

Tonglu site won Government Sustainability Award

The Hangzhou City Green and Low-Carbon Factory is a prestigious municipal recognition for manufacturing excellence in energy efficiency, low-carbon operations, cleaner production and environmental management. In 2025, our Tonglu, China site earned this award through a rigorous government-led evaluation, confirming the site's strong compliance, credible performance, and commitment to continual improvement.

China team won 2025 ESG Model Enterprise Award

Cytiva was recognized with the 2025 ESG Model Enterprise Award at the 15th Philanthropy Festival and ESG Summit in China, honoring its leadership in sustainability practices, talent development, and community engagement.



Associate-led initiatives

In 2025, Cytiva associates led and took action across 21 environmental sustainability-related workshops. Here are some highlights.



Less paper. More impact.

In 2026, Ilfracombe, Portsmouth, and Puerto Rico sites will move to paperless packaging documentation, eliminating Instructions for Use (IFUs) documents, leaflets, and Certificates of Conformity from key product lines across many of our sites. But don't worry, they're still available digitally.

33

metric tons of CO₂ saved

4.8M

sheets of paper saved

From shelf to shared: Giving materials a second chance

Since the start of 2025, our Uppsala, Sweden site has been reusing furniture and building materials to minimize waste generation remove through a simple platform to track inventory and keep tabs on what's already in-house.

82

tons of CO₂ savings

\$500K

saved since launch

Small but smart changes

At the Hauppauge, US site, meaningful water savings came from rethinking everyday practices. The team introduced clear, practical standards for rinsing filter media, ensuring water was used only where it added value, updated maintenance routines, and revised equipment settings to prevent spillover.

23%

reduction of water use compared to 2024

3785

cubic meters of water saved

Investing in our sites

We're committed to investing in our sites to improve operations and reduce waste.

Appreciating biodiversity around us

From early 2024, the Portsmouth, UK site piloted a new biodiversity framework from the Nature Steward Alliance, assessing existing habitats, planting native species, installing a new pond, and advancing no-mow initiatives.



Site

improvements are ongoing, with a bug box installation in 2025 and bird houses planned for 2026

Progressing Tauranga's solar journey

Our Tauranga, New Zealand site has installed solar panels to use renewable electricity across all operations. The panels produced enough electricity to put 13 000 kWh back into the grid.



352

solar panels added to our Tauranga site in 2025

Enabling on-site plastic waste wins

At the Duncan, US site, a new baler has enabled on-site plastic waste to be consolidated and sent to a specialist recovery provider that converts non-hazardous material into renewable energy.



84 tonnes

of plastic waste per year will be diverted from the landfill

Helping people thrive

Real progress, delivered where it matters most: supporting patients, strengthening communities, and reducing environmental impact.



Working for patients

The n-Lorem Foundation is a nonprofit dedicated to creating experimental antisense oligonucleotide (ASO) medicines for patients with nano-rare diseases. These personalized ASO therapies offer hope where conventional treatments fall short.



Advancing our communities

Cytivans give back to their communities through volunteering initiatives that support natural spaces and our environment, STEM, healthcare-related causes, and even rescuing and caring for the black bear population. Yay, bears!



Protecting our environment

Ifracombe, UK has transformed shop-floor waste into reusable materials, reducing incineration alongside cost and emissions savings.

\$450K

in financial, equipment, and consumables donations in 2025

>3000

volunteer hours by individuals at Cytiva in 2025

201

tonnes of waste eliminated

90%

reduction of shop-floor waste

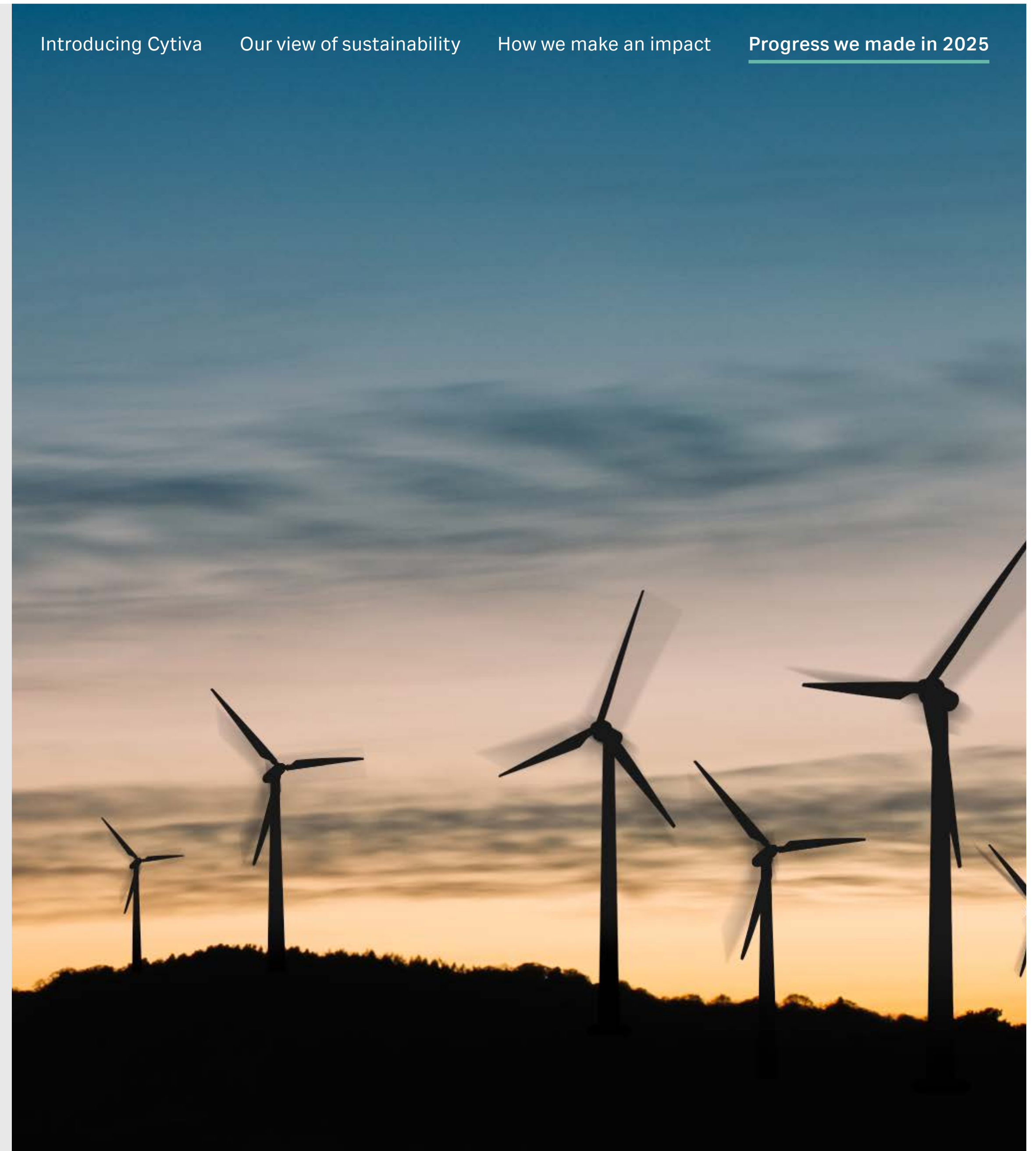
Our commitment

We're committed to ensuring people's well-being, delivering more with less environmental impact, and upholding high ethical standards in every decision we take.

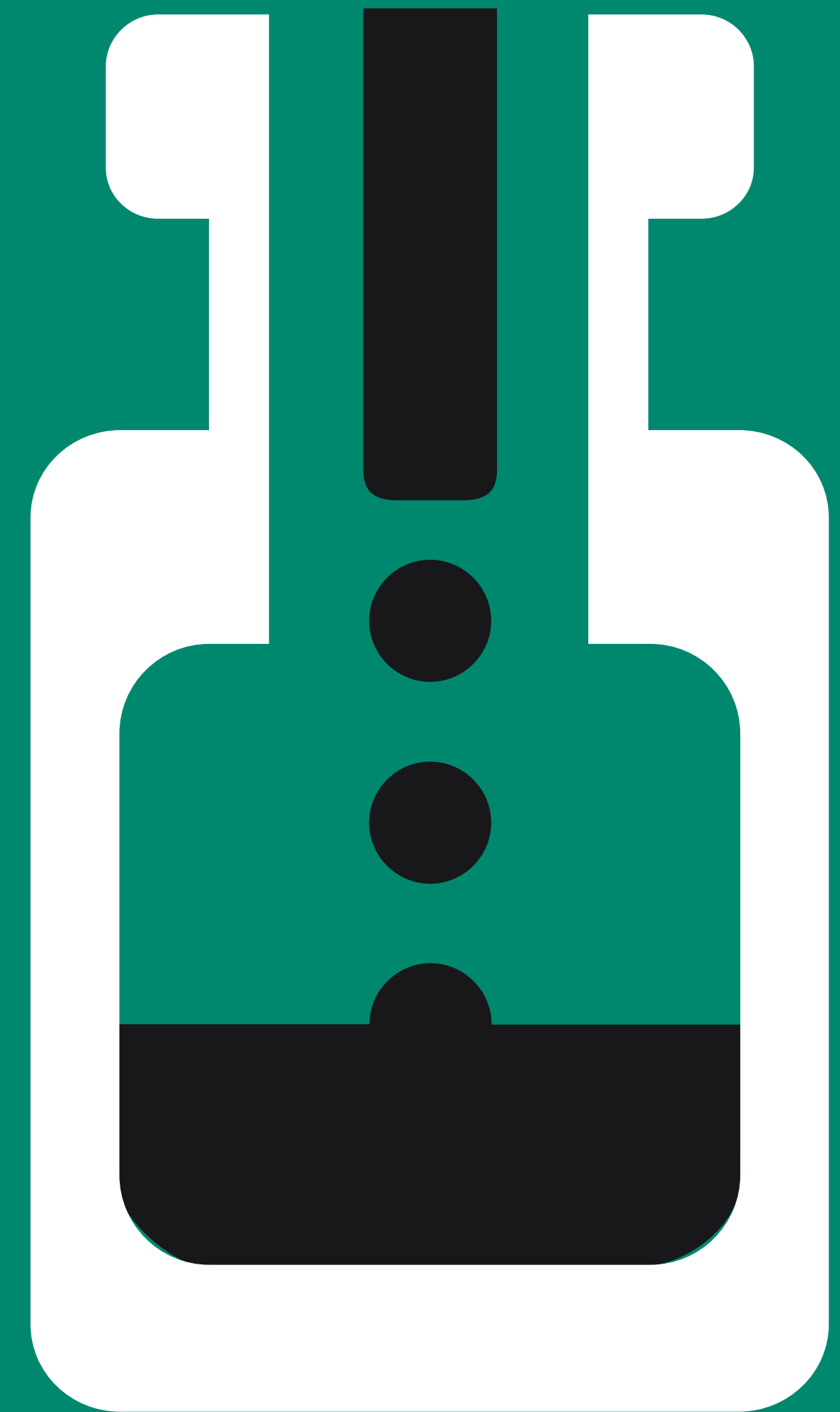
We recognize the urgency of our climate and we're committed to a net-zero value chain by 2050. Through collaboration and knowledge-sharing with suppliers and customers, we'll bring value across the product life cycle by rethinking business models and embracing circular practices.



If you want to learn more about sustainability at Cytiva, visit cytiva.com/about-us/sustainability.



**Thriving people,
thriving planet,
resilient business,
for today and
future generations.**



Cytiva and the Drop logo are trademarks of Life Sciences IP Holdings Corporation or an affiliate doing business as Cytiva. Fast Trak, MabSelect, Pegasus, Supor, Whatman, Whatman GD/X, and Whatman Puradisc are trademarks of Global Life Sciences Solutions USA LLC or an affiliate doing business as Cytiva. All other third-party trademarks are the property of their respective owners. The Danaher trademark is a proprietary mark of Danaher Corporation.

© 2026 Cytiva

For local office contact information, visit [cytiva.com/contact](https://www.cytiva.com/contact)

CY60002-01Jul26-BR

Science, **accelerated.**

