

## Size exclusion chromatography

# Superdex™ 75 Increase columns

Superdex 75 Increase prepacked columns are designed for rapid separation and analysis of proteins with molecular weights ranging from  $M_r$  3000 to 70 000 by size exclusion chromatography (SEC), also called gel filtration (Fig 1). These versatile columns offer separations with high resolution for a variety of applications including preparative protein purification ( $\mu\text{g}$  to  $\text{mg}$  quantities), aggregate analysis, studies of complex formation, and screening of samples. Superdex 75 Increase belongs to the new generation of SEC columns that replaces the well-known Superdex 75 columns.

## Superdex 75 Increase columns offer:

- Increased resolution compared with Superdex 75, for higher purity and improved analysis results
- Reduced runtime compared with Superdex 75, for obtaining results faster
- Versatile use in both preparative and analytical applications
- Tolerance to repeated harsh cleaning procedures at high pH, giving long column lifetime and minimal carry-over

## Resin characteristics

Superdex 75 Increase resin is based on a high-flow agarose base matrix with good pressure/flow properties. The small bead size with a narrow size distribution allows for high-resolution separations. In addition, low nonspecific interactions permit high recovery of biological materials. The characteristics of the Superdex 75 Increase resin are shown in Table 1.

**Table 1.** Characteristics of Superdex 75 Increase

Matrix	Composite of cross-linked agarose and dextran
Fractionation range	$M_r$ 3000 to 70 000 (globular proteins) $M_p^*$ 500 to 30 000 (dextrans)
Exclusion limit	Approx. $M_r$ 100 000 (globular proteins)
Particle size, $d_{50v}^\dagger$	9 $\mu\text{m}$ (wet)
pH stability	
operational <sup>‡</sup>	3 to 12
cleaning-in-place (CIP) <sup>††</sup>	1 to 14
Operating temperature	4°C to 40°C
Storage temperature	4°C to 30°C

\* Peak molecular weight.

<sup>†</sup> Median particle size of the cumulative volume distribution.

<sup>‡</sup> pH range where resin can be operated without significant change in function.

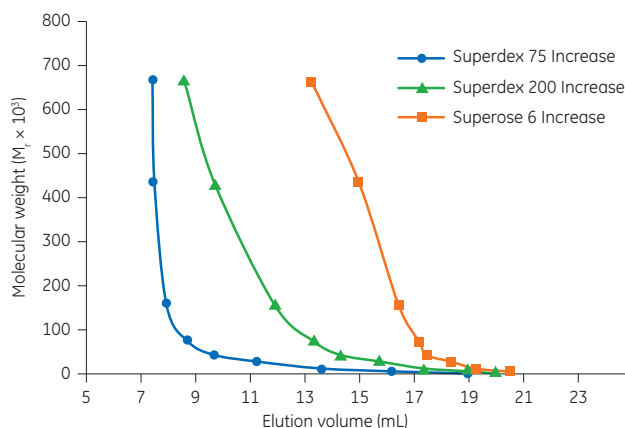
<sup>††</sup> pH range where resin can be subjected to cleaning- or sanitization-in-place without significant change in function.



**Fig 1.** Superdex 75 Increase 3.2/300, Superdex 75 Increase 5/150 GL, and Superdex 75 Increase 10/300 GL columns.

## Selectivity of the resin

Superdex 75 Increase and the related Superdex 200 Increase and Superose™ 6 Increase belong to the new generation of SEC resins based on high-flow agarose with small beads. The resins have different selectivities to complement each other (Fig 2). Compared with Superdex 200 Increase (recommended fractionation range  $M_r$  10 000 to 600 000 for globular proteins), Superdex 75 Increase gives improved separation in the lower molecular weight range. Superose 6 Increase is specially designed for separation of large proteins and protein complexes (recommended fractionation range up to  $M_r$  5 000 000).



**Fig 2.** Elution volumes for globular proteins of various molecular weights on Superdex 75 Increase 10/300 (blue), Superdex 200 Increase 10/300 (green), and Superose 6 Increase 10/300 (orange). Note! The whole fractionation range of Superose 6 Increase is not covered in this diagram.

**Table 2.** Characteristics of columns prepacked with Superdex 75 Increase

Column	Bed dimensions diam. x height (mm)	Approximate bed volume (mL)	Column efficiency (theoretical plates m <sup>-1</sup> )	Recommended sample volume (μL)	Recommended operational flow rate (mL/min)*	Max. operational flow rate (mL/min)*	Typical pressure drop over column (MPa)†
Superdex 75 Increase 10/300 GL	10 × 300	24	> 43 000	25 to 500	0.8	1.6	3.0
Superdex 75 Increase 5/150 GL	5 × 150	3	> 38 000	4 to 50	0.45	0.75	3.0
Superdex 75 Increase 3.2/300	3.2 × 300	2.4	> 43 000	4 to 50	0.075	0.15	2.0

\* Note! Measured with water at 25°C. Flow rate needs to be decreased when working at low temperature or with viscous solutions, see product instructions for more details.

† Measured with water at 25°C.

**Table 3.** Column choice for different applications

Type of application/column	10/300 GL	5/150 GL	3.2/300
<b>Small-scale preparative runs (mg)</b>	×		
<b>Microscale preparative runs (μg)</b> When sample amount is limited and small buffer consumption is important			×
<b>High-resolution analysis (25 to 500 μL)</b>	×		
<b>High-resolution analysis (4 to 25 μL)</b> When sample amount is limited and small buffer consumption is important			×
<b>Purity check</b>		×	
<b>Rapid screening</b> When time is limited and small buffer and sample consumptions are important		×	

### Chemical stability of Superdex 75 Increase

Superdex 75 Increase can be used with aqueous solutions in the pH range 3 to 12. Solutions containing chaotropic agents (6 M guanidine hydrochloride, 8 M urea) and detergents such as SDS (at least up to 1%) can be used together with the resin without affecting its performance. The resin also withstands the conditions used for CIP in the pH range 1 to 14. For storage conditions, see column instructions listed under *Related literature*.

### Column characteristics and column selection

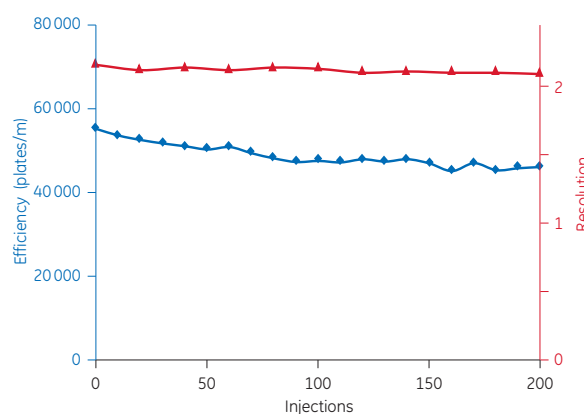
Superdex 75 Increase is available prepacked in Tricorn™ high-performance columns of two different sizes (10/300 GL and 5/150 GL) as well as in the 3.2/300 column format (Table 2). All columns are made of glass to allow easier visual inspection of the packed bed. The glass tube is coated with a protecting plastic film or protected with a plastic sleeve. Each column has its own application purpose (Table 3). Superdex 75 Increase 10/300 GL is suitable for both small-scale preparative purification and for analytical applications. Superdex 75 Increase 3.2/300 is an excellent choice when working with very small sample volumes and for high-resolution, microscale separations. Superdex 75 Increase 5/150 GL is the first choice for rapid screening, and for purity checks.

### Excellent reproducibility and durability

Reproducible results are essential in all research. The long working life and high reproducibility of Superdex 75 Increase prepacked columns are the result of optimized design, stable properties of the resin, and controlled production procedures.

Studies were performed on Superdex 75 Increase 10/300 GL columns to verify the chemical stability and robustness of the resin and prepacked column. The column efficiency and resolution were tested with acetone and standard proteins, respectively, before a series of 200 runs were conducted, each with application of a 600 μL sample of high IgG concentration. After every 10<sup>th</sup> run, a CIP procedure with NaOH was performed, followed by a new efficiency test. In addition, after every 20<sup>th</sup> run, a new resolution test with standard proteins was performed.

Peak areas and resolution were essentially unchanged during the study (Fig 3). Plate numbers remained high over time. The results illustrate the stable properties of the resin during a large number of runs, and the compatibility of the resin with repeated NaOH-exposure.



**Fig 3.** Example of results from a study with 200 IgG injections, including harsh CIP procedures after every 10<sup>th</sup> run (1.5 column volumes of 0.5 M NaOH). Efficiency test conducted every 10<sup>th</sup> run after CIP (blue). Resolution determined every 20<sup>th</sup> run after CIP by separation of ovalbumin and carbonic anhydrase (red).

## Improved resolution compared with Superdex 75

Compared with its predecessor Superdex 75, Superdex 75 Increase has improved resolution and flow rate. In Figure 4, the higher resolution of Superdex 75 Increase 10/300 GL compared with Superdex 75 10/300 GL is shown. Figure 5 shows that approximately the same resolution was achieved with a 3 to 4 times faster separation using Superdex 75 Increase compared with Superdex 75.

**Columns:** Superdex 75 Increase 10/300 GL (A)  
Superdex 75 10/300 GL (B)

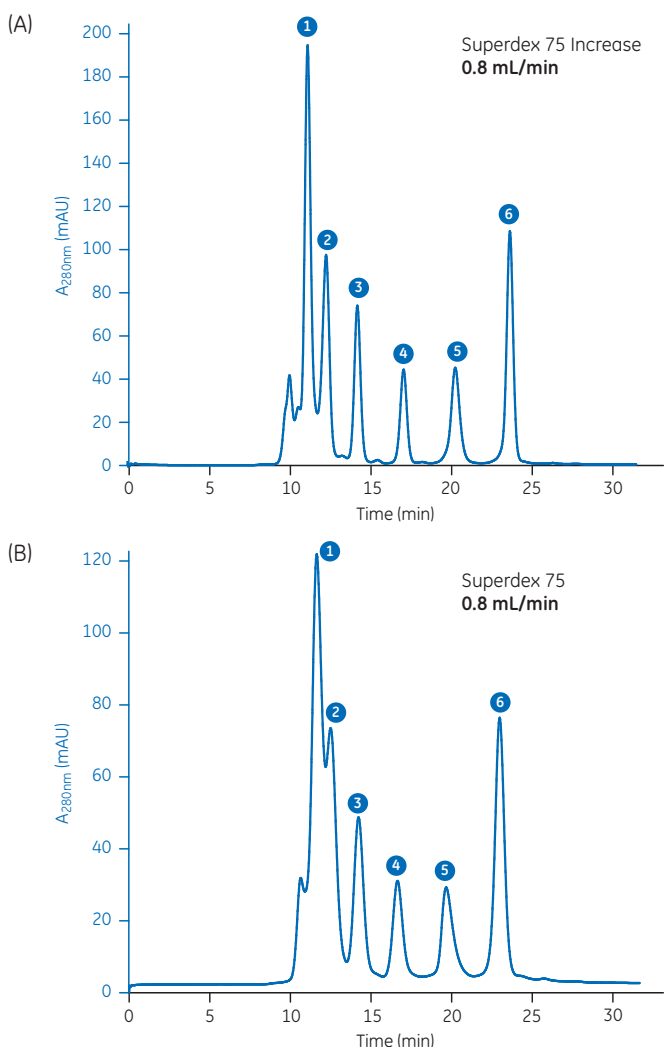
**Sample:** 1. Conalbumin ( $M_r$  75 000), 2.9 mg/mL  
2. Ovalbumin ( $M_r$  44 000), 3.7 mg/mL  
3. Carbonic anhydrase ( $M_r$  29 000), 1.4 mg/mL  
4. Cytochrome C ( $M_r$  12 300), 1.0 mg/mL  
5. Aprotinin ( $M_r$  6 500), 2.0 mg/mL  
6. Vitamin B<sub>12</sub> ( $M_r$  1 300), 0.25 mg/mL

**Sample volume:** 100  $\mu$ L

**Buffer:** PBS (10 mM phosphate buffer, 140 mM NaCl, pH 7.4)

**Flow rate:** 0.8 mL/min

**System:** ÄKTA™ pure 25



**Fig 4.** Chromatograms showing high-resolution SEC at 0.8 mL/min of a mixture of six standard components on (A) Superdex 75 Increase 10/300 GL and (B) Superdex 75 10/300 GL. Note that increased resolution gives higher peaks, with higher concentrations. In the comparison here shown, the resolution improvement with the new generation column was 40% to 120%, with the largest improvement for the higher-molecular weight proteins.

**Columns:** Superdex 75 Increase 10/300 GL (A)  
Superdex 75 10/300 GL (B)

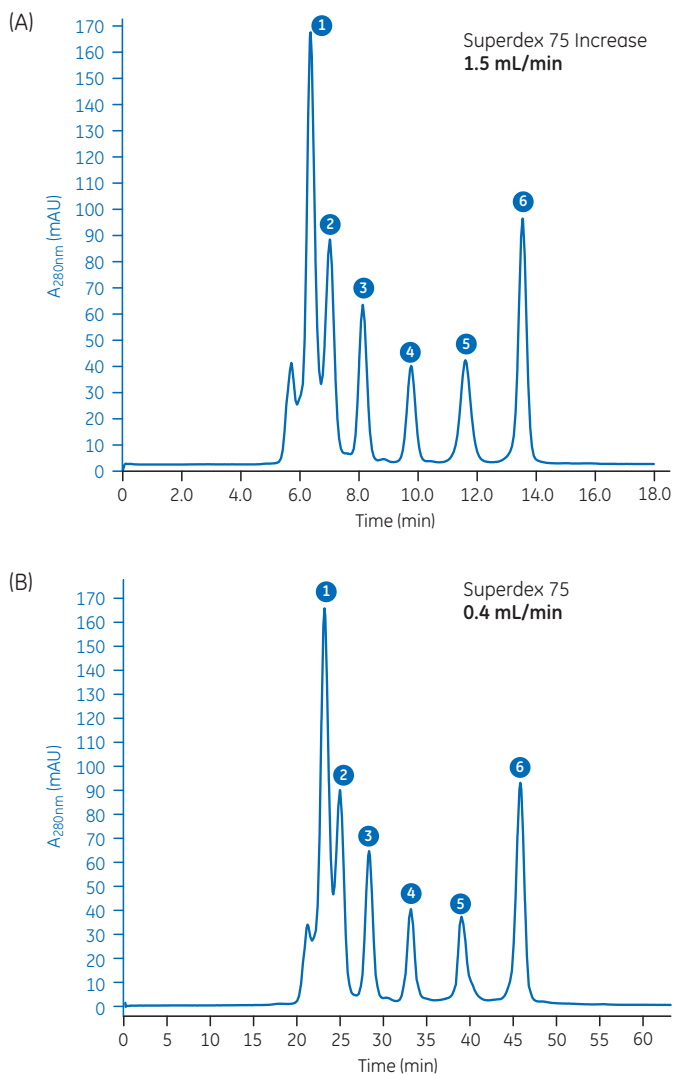
**Sample:** 1. Conalbumin ( $M_r$  75 000), 2.9 mg/mL  
2. Ovalbumin ( $M_r$  44 000), 3.7 mg/mL  
3. Carbonic anhydrase ( $M_r$  29 000), 1.4 mg/mL  
4. Cytochrome C ( $M_r$  12 300), 1.0 mg/mL  
5. Aprotinin ( $M_r$  6 500), 2.0 mg/mL  
6. Vitamin B<sub>12</sub> ( $M_r$  1 300), 0.25 mg/mL

**Sample volume:** 100  $\mu$ L

**Buffer:** PBS

**Flow rates:** 1.5 mL/min (A)  
0.4 mL/min (B)

**System:** ÄKTA pure 25



**Fig 5.** Chromatograms showing high-resolution SEC of a mixture of six standard components on (A) Superdex 75 Increase 10/300 GL at 1.5 mL/min and (B) Superdex 75 10/300 GL at 0.4 mL/min. Note that approximately the same resolution was achieved with a 3 to 4 times faster separation using Superdex 75 Increase 10/300 GL.

## Superdex 75 Increase 10/300 GL vs 5/150 GL column: resolution vs speed

The Superdex 75 Increase 10/300 GL column is designed for high-resolution SEC while the smaller 5/150 GL column is designed for rapid screening, yet with sufficient resolution. While speed is preferable in applications such as purity and size homogeneity analyses, this comes at the cost of decreased resolution. As can be seen in Figure 6, SEC separation of a sample mixture using the 10/300 GL column gave a high-resolution separation in 25 min. The separation time on the 5/150 GL column was only 6 min, however, with significantly lower peak resolution. For each separation purpose, the use of the 5/150 column for rapid screening should be optimized by choosing a flow rate that combines sufficient resolution with fast separations. Even though our tests have shown that the loss of resolution for the 5/150 column is small when going from, for example, 0.3 to 0.6 mL/min, the effect of flow rate changes should be investigated for each separation application.

**Columns:** Superdex 75 Increase 10/300 GL and Superdex 75 Increase 5/150 GL

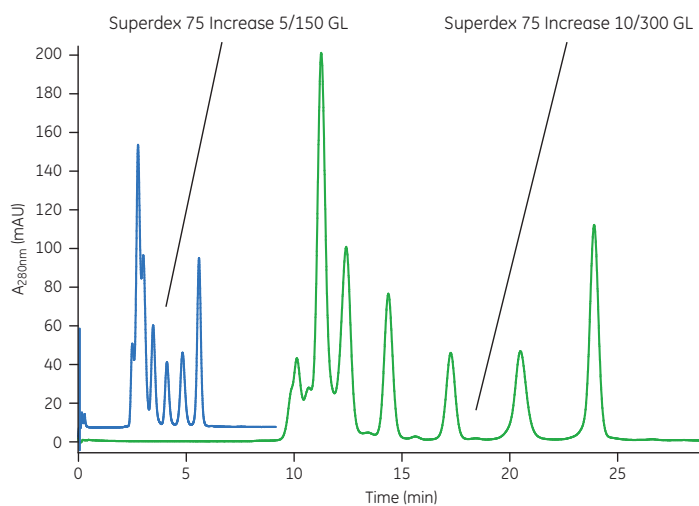
**Sample:** 1. Conalbumin ( $M_r$  75 000), 2.9 mg/mL  
2. Ovalbumin ( $M_r$  44 000), 3.7 mg/mL  
3. Carbonic anhydrase ( $M_r$  29 000), 1.4 mg/mL  
4. Cytochrome C ( $M_r$  12 300), 1.0 mg/mL  
5. Aprotinin ( $M_r$  6 500), 2.0 mg/mL  
6. Vitamin B<sub>12</sub> ( $M_r$  1 300), 0.25 mg/mL

**Sample volumes:** 100  $\mu$ L, (10/300 GL column)  
10  $\mu$ L, (5/150 GL column)

**Buffer:** PBS

**Flow rates:** 0.8 mL/min (10/300 GL)  
0.45 mL/min (5/150 GL)

**System:** ÄKTA pure 25



**Fig 6.** Overlay chromatograms with a shared time axis, showing separations of a six-component mixture using Superdex 75 Increase 5/150 GL (blue) and 10/300 GL columns (green).

## High sensitivity for small sample volumes

Superdex 75 Increase 3.2/300 gives high resolution and good sensitivity (high peaks) for small sample volumes. To compare column sizes, a 10  $\mu$ L sample mixture was applied to both 3.2/300 and 10/300 GL columns. As shown in Figure 7, the detection signal from the run with Superdex 75 Increase 3.2/300 was considerably higher compared with the more diluted peaks from using Superdex 75 Increase 10/300 GL.

**Columns:** Superdex 75 Increase 3.2/300 (A)  
Superdex 75 Increase 10/300 GL (B)

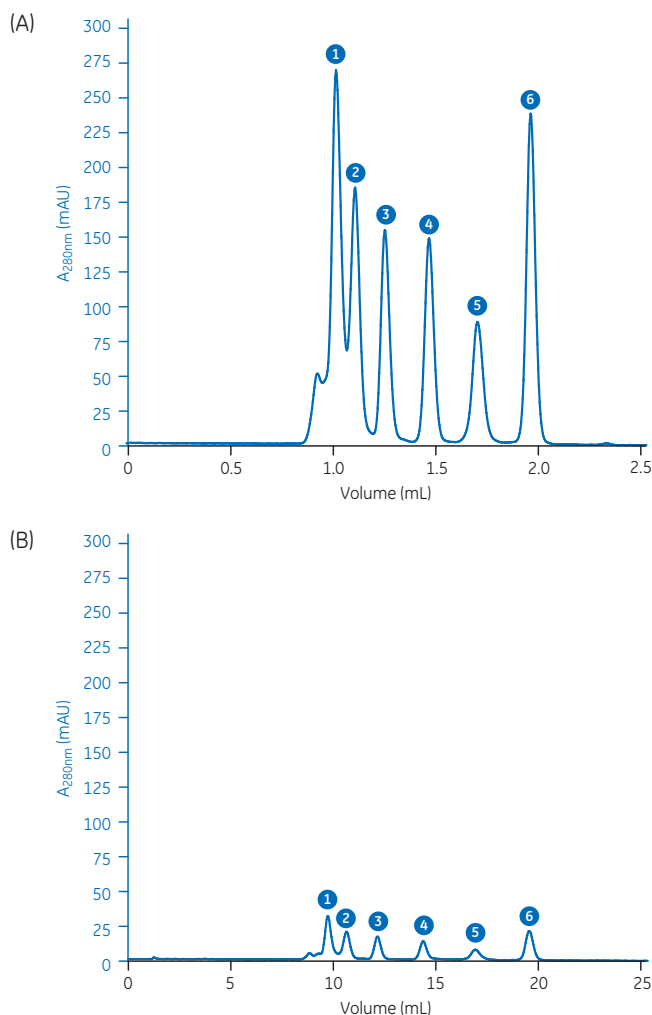
**Sample:** 1. Conalbumin ( $M_r$  75 000), 2.9 mg/mL  
2. Ovalbumin ( $M_r$  44 000), 3.7 mg/mL  
3. Carbonic anhydrase ( $M_r$  29 000), 1.4 mg/mL  
4. Cytochrome C ( $M_r$  12 300), 1.0 mg/mL  
5. Aprotinin ( $M_r$  6 500), 2.0 mg/mL  
6. Vitamin B<sub>12</sub> ( $M_r$  1 300), 0.25 mg/mL

**Sample volume:** 10  $\mu$ L

**Flow rates:** 0.075 mL/min (A)  
0.75 mL/min (B)

**Buffer:** PBS

**System:** ÄKTA pure 25



**Fig 7.** A small volume (10  $\mu$ L with a total of 110  $\mu$ g protein) of a sample mixture containing six components was separated on (A) Superdex 75 Increase 3.2/300 and (B) Superdex 75 Increase 10/300 GL. Both chromatograms show the same scale for UV detection.

## Operation

### Choice of eluents

The sample should be fully soluble in the selected eluent. The eluent should also be chosen so that downstream applications are simplified. Chaotropic agents and detergents, for example, for membrane proteins, can be used. To further minimize the low ionic interactions with the matrix, it is recommended to add at least 0.15 M NaCl to the eluent or to use a buffer with equivalent ionic strength.

### Sample volumes, flow rates, and system dead volumes

For protein concentrations below 10 mg/mL, the impact of sample viscosity is generally low or zero. To achieve high resolution, the sample volume should be less than 2% of the column volume. Sample volumes between 0.1% and 1.0% of the column volume give the highest resolution. By decreasing the flow rate, increased resolution can be achieved. For maximal resolution in SEC, all extra volumes should be minimized. This applies to dead volumes both before the column (sample injector to column inlet) and after the column (column outlet to UV cell or fraction collector). Decrease the dead volume by using a suitable small-volume column valve (or no valve) and use short, narrow-diameter capillaries. For optimization examples and further information, see column instructions and Cue card listed under *Related literature*.

## Applications

### Preparative SEC purification

Preparative SEC is a powerful method for obtaining size-homogeneous protein preparations. As only a limited number of separations are often performed, flow rates can be kept low to obtain maximal resolution. An ultrafiltration step can be included to increase sample concentrations so that more protein can be applied in minimal volume.

Figures 8 and 9 show an example where 5 mg of target protein, essentially free of oligomers and aggregates, was obtained in a single SEC run. The start material was a preparation of partially purified histidine-tagged protein that had oligomerized during storage and freeze-thawing. Using the Superdex 75 Increase 10/300 GL column, 500  $\mu$ L of the preparation was purified at a low flow rate (0.2 mL/min) and fractions of 0.25 mL were collected. The preparative run gave essentially two peaks, with the later peak being the desired one. Before deciding which fractions to pool, 25  $\mu$ L samples of the fractions were rapidly analyzed by SEC to assess size-homogeneity before pooling (not shown). Note that SEC analysis can reveal size-heterogeneity that cannot be seen with SDS-PAGE, as the SDS generally dissociates any noncovalent dimers and oligomers.

**Columns:** Superdex 75 Increase 10/300 GL for preparative SEC (A)  
Superdex 75 Increase 5/150 GL for analysis (B)

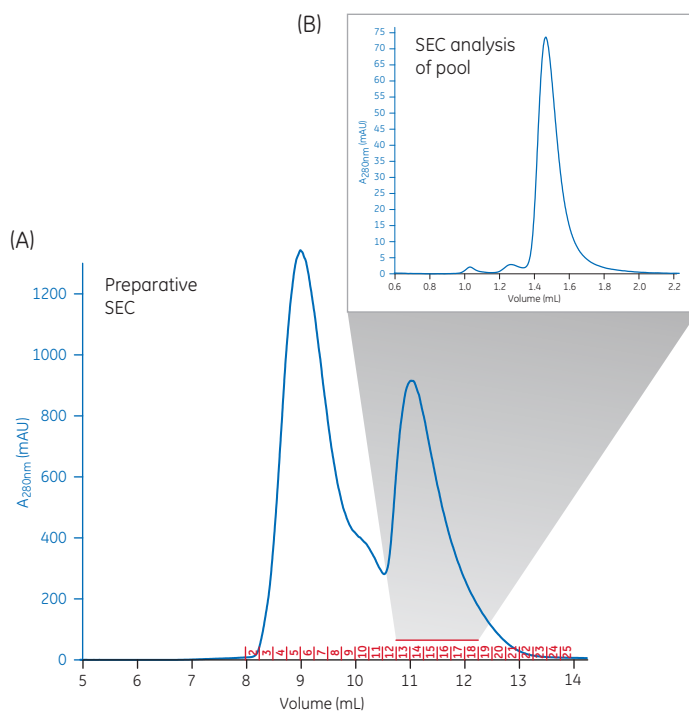
**Samples:** Concentrated, partially purified histidine-tagged protein (A)  
Samples of SEC fractions and from pooled peaks (B)

**Sample volumes:** 500  $\mu$ L (A)  
25  $\mu$ L (B)

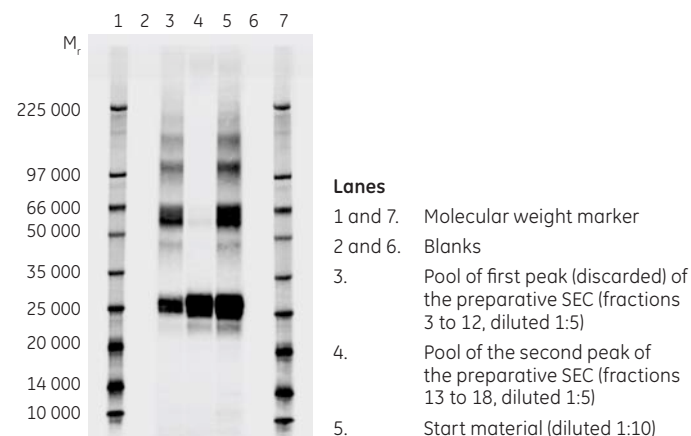
**Buffer:** PBS

**Flow rates:** 0.2 mL/min (A)  
0.45 mL/min (B)

**System:** ÄKTA pure 25 with 2 mm UV cell to extend the linear absorbance range



**Fig 8.** (A) Preparative SEC purification of a partially purified and oligomerized histidine-tagged protein. With rapid SEC analysis of fresh fractions (not illustrated), it was revealed that fraction 13, but not fraction 12, was sufficiently size-homogeneous to be included in the pool. The final pool (fractions marked with red bar) contained approximately 5 mg of target protein. (B) SEC analysis of the final pool.



**Fig 9.** Analysis of samples from the preparative SEC purification. SDS-PAGE separation of fluorescent prestained samples on an 8% to 18% gel using Amersham™ PhastSystem™ electrophoresis unit. The system allows automatic scanning of the gel in its run position.

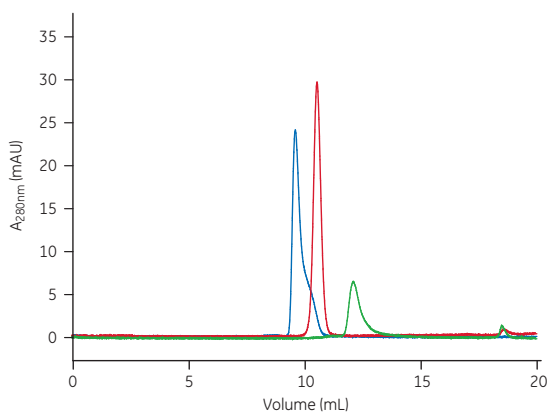


## Analysis of protein-protein interaction

Separately purified proteins can be mixed and then analyzed by SEC to quickly determine any tendency of interaction between them. This approach can also be used to determine under which conditions two proteins interact. By mixing separately purified proteins under certain buffer conditions, and performing SEC separation under the same buffer conditions, rapid screening of a number of different potential binding conditions can be conducted.

The example shown in Figure 10 involves two bacterial proteins: a transcription factor and an adaptor protein. The proteins were separately expressed with histidine tags in *E. coli*, and then purified by immobilized metal ion affinity chromatography (IMAC) followed by tag cleavage, tag removal, and preparative SEC. The analytical SEC results for each protein, and after mixing the two proteins are shown as an overlay plot. When the two proteins were mixed, a single peak appeared at an elution position that corresponds to the molecular weight of a 1:1 complex between the two proteins.

**Column:** Superdex 75 Increase 10/300 GL  
**Samples:** Separately purified transcription factor (M<sub>r</sub> 16 000), adaptor protein (M<sub>r</sub> 34 000) and a mix of the two  
**Sample volume:** 100 µL  
**Buffer:** 50 mM Tris-HCl, 150 mM NaCl, pH 8.0  
**Flow rates:** 0.75 mL/min  
**System:** ÄKTA avant 25



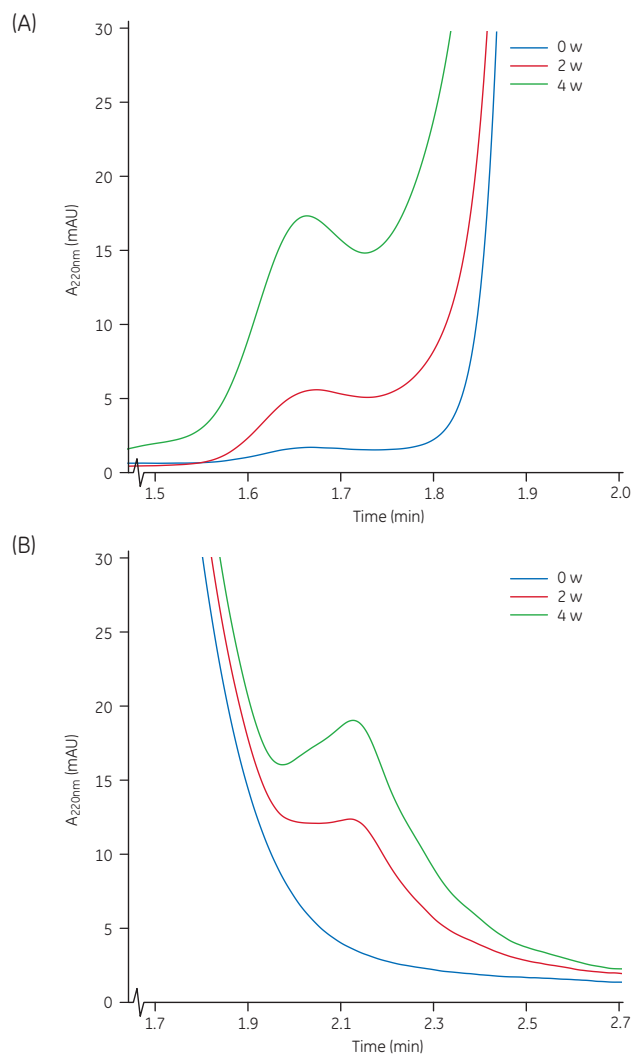
**Fig 10.** Overlay chromatograms of analytical SEC on a Superdex 75 Increase 10/300 GL column. Transcription factor (green) and adaptor protein (red) were separately analyzed. A mixture of the proteins was also analyzed (blue), showing interaction under the conditions used. Image and experimental data are published with permission from Drs Annika Rogstam and Claes von Wachenfeldt, Lund Protein Purification Platform (LP3), Department of Biology, Lund University, Sweden.

## Analysis of protein storage stability

In structural and functional protein studies, it is essential that the prepared protein does not aggregate, oligomerize, or degrade. With analytical SEC, aggregation tendencies and other size changes can be studied under different conditions, for example, for storage stability analyses of biopharmaceuticals.

In the examples in Figure 11, Superdex 75 Increase 5/150 GL was used to monitor small changes in size homogeneity of two proteins stored under different conditions and over different time periods (weeks). The HPLC system used was equipped with an autosampler to allow analysis of many samples during long, unattended, overnight SEC runs.

**Column:** Superdex 75 Increase 5/150 GL  
**Samples:** Stored protein preparations  
**Sample volume:** 10 µL  
**Flow rate:** 0.5 mL/min  
**Buffer:** PBS  
**System:** HPLC system equipped with autosampler



**Fig 11.** Monitoring of size-homogeneity changes of proteins during storage (0, 2, and 4 weeks) using Superdex 75 Increase 5/150 GL for rapid analyses of two purified proteins. In (A), higher molecular weight variants were detected, whereas in (B), degraded products were observed. The area under the curves for the much larger main peaks (not shown) decreased over time, corresponding to the area-increase seen for the small heterogeneity shoulders in (A) and (B).

## Ordering information

Product	Quantity	Product code
Superdex 75 Increase 10/300 GL	1	29148721
Superdex 75 Increase 5/150 GL	1	29148722
Superdex 75 Increase 3.2/300	1	29148723

### Related products

Superdex 200 Increase 10/300 GL	1	28990944
Superdex 200 Increase 5/150 GL	1	28990945
Superdex 200 Increase 3.2/300	1	28990946
Superose 6 Increase 10/300 GL	1	29091596
Superose 6 Increase 5/150 GL	1	29091597
Superose 6 Increase 3.2/300	1	29091598
Gel Filtration LMW Calibration Kit	1	28403841
Gel Filtration HMW Calibration Kit	1	28403842

### Accessories

Tricorn 10 Filter Kit	1	29053612
Tricorn 5 Filter Kit	1	29053586
Filter Tool	1	18115320
Fingertight connector, 1/16" male	10	18111255
Tricorn storage/shipping device	1	18117643

### Related literature

Handbook: Size-exclusion chromatography, principles and methods	1	18102218
Selection guide: Prepacked chromatography columns for ÄKTA systems	1	28931778
Instrument management handbook: ÄKTA laboratory-scale chromatography systems	1	29010831
Procedure: Maintenance and cleaning of size exclusion chromatography columns	1	29140760
Cue card: Optimal configuration of ÄKTA pure 25 for small-scale SEC	1	29181181
Instruction Superdex 75 Increase 5/150 GL/ Superdex 75 Increase 10/300 GL	1	29163059
Instruction Superdex 75 Increase 3.2/300	1	29163060

## Acknowledgement

We thank Drs Annika Rogstam and Claes von Wachenfeldt, Lund Protein Purification Platform (LP3), Department of Biology, Lund University, Sweden for sharing of data.

GE Healthcare Bio-Sciences Corp.  
100 Results Way  
Marlborough, MA 01752  
USA

### **gelifesciences.com**

GE, GE monogram, Amersham, ÄKTA, HiLoad, PhastSystem, Superdex, Superose, and Tricorn are trademarks of General Electric Company.

© 2016 General Electric Company. First published Apr. 2016.

All goods and services are sold subject to the terms and conditions of sale of the company within GE Healthcare which supplies them. A copy of these terms and conditions is available on request. Contact your local GE Healthcare representative for the most current information.

GE Healthcare Bio-Sciences AB, Björkgatan 30, 751 84 Uppsala, Sweden

GE Healthcare Europe GmbH, Munzinger Strasse 5, D-79111 Freiburg, Germany

GE Healthcare UK Ltd., Amersham Place, Little Chalfont, Buckinghamshire, HP7 9NA, UK

GE Healthcare Dharmacon Inc., 2650 Crescent Dr, Lafayette, CO 80026, USA

HyClone Laboratories Inc., 925 W 1800 S, Logan, UT 84321, USA

GE Healthcare Japan Corp., Sanken Bldg., 3-25-1, Hyakunincho Shinjuku-ku, Tokyo 169-0073, Japan

For local office contact information, visit [gelifesciences.com/contact](http://gelifesciences.com/contact)

29187961 AB 09/2016