

Standard packaging

HYCLONE LIQUID MEDIA AND BUFFERS

As a supplier of large-volume liquids, we understand the importance of product packaging that can easily be transported and used while securing the integrity of the product. Single-use presterilized container bags from 1 to 1000 L are routinely used for shipping of HyClone™ liquid cell culture media and bioprocess buffers and can also be selected for delivery of custom liquids. The containers have been extensively tested and validated for product integrity and comply with internationally recognized transportation requirements.



Fig 1. Filling 2D bags with HyClone cell culture media.

Volumes 1 to 20 L, filled in 2D bags, are double-wrapped and placed in corrugated boxes. Volumes 50 to 200 L, filled in 3D square bags, are placed in a wrapped single-use drum with an inner liner. Volumes 500 to 1000 L, filled in 3D square bags, are placed in a bin with an inner liner. Any remaining interior space in the drum or bin is filled with bubble wrap or foam.

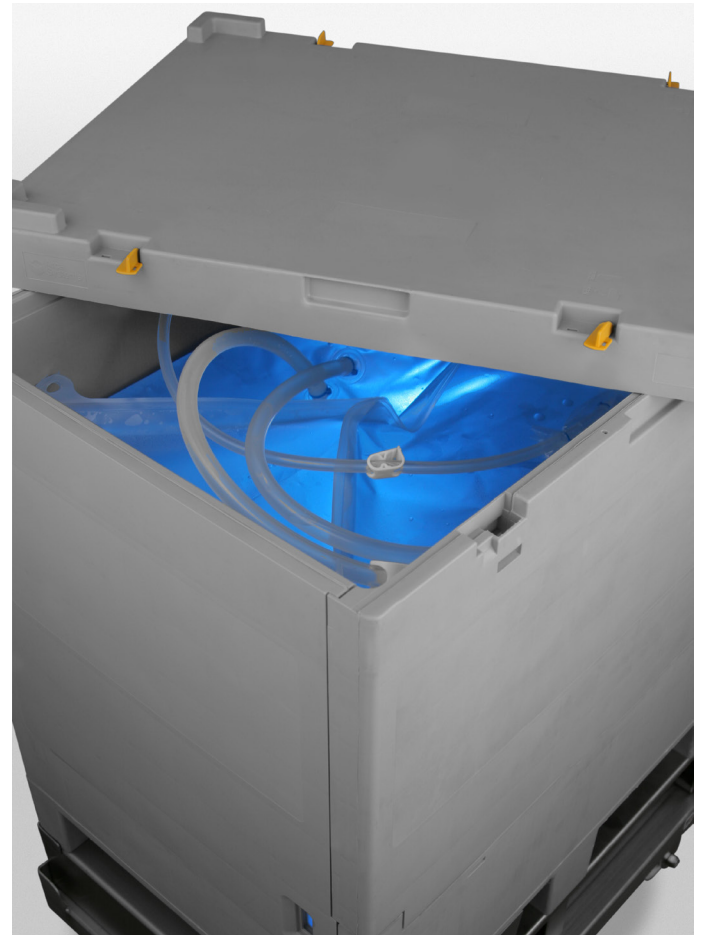


Fig 2. Square 3D bag filled with large volume of buffer and packed in a bin with an inner liner.

All tubing lines are C-Flex® and provided with clamps. End fittings are capped or plugged and protected with a resealable polybag for dust cover.

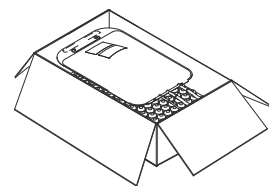
The bins are reusable and cleanable, rigid plastic units specifically designed for the storage and shipment of large-volume bioprocessing fluids. The collapsible walls fold down for easy storage when the container is not in use. Bottom drain options are available.

Standard packaging of liquids manufactured in Europe*

Liquid volumes from 1 to 20 L are sterile-filtered into in gamma-irradiated 2D bags, double-wrapped for particulate protection, and shipped in corrugated boxes. Tubing lengths are up to 0.5 m.

Unit size	1 L	10 L	20 L
Single-use container bag	2D face port	2D end port	2D end port
Connectivity	Quick connect (male and female)	Quick connect (male and female)	Quick connect (male and female)
Shipping container	Corrugated box	Corrugated box	Corrugated box
Container dimensions (L × W × H)	37.5 × 26.5 × 12.0 cm (14.76 × 10.43 × 4.72 inch)	50.5 × 33.5 × 13.5 cm (19.88 × 13.19 × 5.31 inch)	61.5 × 37.5 × 18.5 cm (24.21 × 14.76 × 7.28 inch)
Unit weight	1.5 kg (3.3 lbs)	10.5 kg (23.15 lbs)	21.0 kg (46.29 lbs)
Units per pallet	42	32	15
Pallet weight	83 kg (182.9 lbs)	356 kg (784.5 lbs)	335 kg (738.5 lbs)
Pallet dimensions (L × W × H)	120 × 80 cm (47.24 × 31.49 inch)	120 × 80 cm (47.24 × 31.49 inch)	120 × 80 cm (47.24 × 31.49 inch)

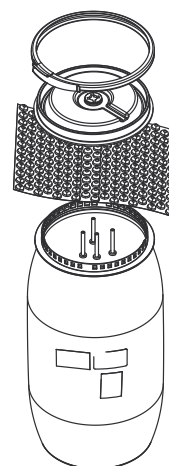
* Standard does not necessarily mean Made-to-Stock (MTS); consult with a product manager for details.



Liquid volumes 50 to 200 L are filled in 3D square bags and placed in a single-use drum with an inner liner. The drum is wrapped in a protective bag for particulate protection. Tubing lengths are 1 to 1.5 m. Top drain options here.

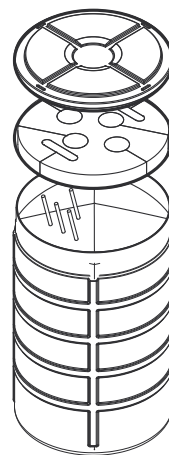
Unit size	50 L	100 L	200 L
Single-use container bag	3D top drain* with dip tube	3D top drain* with dip tube	3D top drain* with dip tube
Connectivity	Quick connect (female) and Tri-clamp 1 1/2" × 1/2" HB	Quick connect (female) and Tri-clamp 1 1/2" × 1/2" HB	Quick connect (female) and Tri-clamp 1 1/2" × 1/2" HB
Shipping container	Single-use drum	Single-use drum	Single-use drum
Container dimensions (Ø × H)	40.0 × 62.5 cm (15.75 × 24.61 inch)	50.0 × 80.0 cm (19.69 × 31.50 inch)	60.0 × 97.5 cm (23.62 × 38.39 inch)
Unit weight	55.5 kg (122.5 lbs)	107 kg (235.8 lbs)	210 kg (462.9 lbs)
Units per pallet	6	2	2
Pallet weight	353 kg (778.2 lbs)	234 kg (515.8 lbs)	440 kg (970.0 lbs)
Pallet dimensions (L × W × H)	120 × 80 cm (47.24 × 31.49 inch)	120 × 80 cm (47.24 × 31.49 inch)	120 × 80 cm (47.24 × 31.49 inch)

* Bottom drain available - see next table.



Liquid volumes 50 to 200 L are filled in 3D square bags and placed in a single-use drum with an inner liner. The drum is wrapped in a protective bag for particulate protection. Tubing lengths are 1 to 1.5 m. Bottom drain options here.

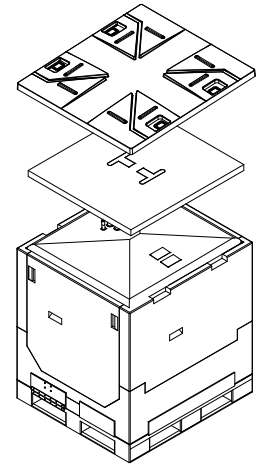
Unit size	50 L	100 L	200 L
Single-use container bag	3D bottom drain	3D bottom drain	3D bottom drain
Connectivity	Quick connect (male and female) and luer lock (male) on top of bag; female luer lock connector on bottom of bag	Quick connect (male and female) and luer lock (male) on top of bag; female luer lock connector on bottom of bag	Quick connect (male and female) and luer lock (male) on top of bag; female luer lock connector on bottom of bag
Shipping container	Single-use drum	Single-use drum	Single-use drum
Container dimensions (Ø × H)	61.0 × 58.0 cm (24.02 × 22.83 inch)	61.0 × 76.0 cm (24.02 × 29.92 inch)	61.0 × 114.0 cm (24.02 × 44.88 inch)
Unit weight	67 kg (147.7 lbs)	119 kg (262.3 lbs)	224 kg (493.8 lbs)
Units per pallet	2	2	2
Pallet weight	154 kg (339.5 lbs)	258 kg (568.7 lbs)	468 kg (1031.7 lbs)
Pallet dimensions (L × W × H)	120 × 80 cm (47.24 × 31.49 inch)	120 × 80 cm (47.24 × 31.49 inch)	120 × 80 cm (47.24 × 31.49 inch)



Liquid volumes from 500 to 1000 L are sterile-filtered into gamma-irradiated 3D square bags and placed in a bin with an inner liner. Tubing lengths are 1 to 1.5 m.

Unit size	500 L	500 L	1000 L	1000 L
Single-use bag	3D 500 L bottom drain	3D 500 L top drain	3D 1000 L bottom drain	3D 1000 L top drain
Connectivity	Female quick connector on top and 1 1/2" Tri-clamp on bottom	Male and female luer locks, female quick connector, dip tube has male quick connector	Female quick connector on top and 1 1/2" Tri-clamp on bottom	Male and female luer locks, female quick connector, dip tube has male quick connector
Shipping container	Reusable bin with integrated pallet	Reusable bin with integrated pallet	Reusable bin with integrated pallet	Reusable bin with integrated pallet
Container dimensions (L x W x H)	45.5 x 45.5 x 38.6 inch (115.5 x 115.5 x 98.0 cm)	45.5 x 45.5 x 44.6 inch (115.5 x 115.5 x 113.2 cm)	45.5 x 45.5 x 50.9 inch (115.5 x 115.5 x 129.4 cm)	45.5 x 45.5 x 44.6 inch (115.5 x 115.5 x 113.2 cm)
Collapsed height	24.8 inch (62.9 cm)	18.4 inch (46.7 cm)	24.8 inch (62.9 cm)	18.4 inch (46.7 cm)
Empty weight	101 kg (222.67 lbs)	89 kg (196.21 lbs)	113 kg (249.12 lbs)	89 kg (196.21 lbs)
Typical full weight	611 kg (1347.02 lbs)	599 kg (1320.57 lbs)	1123 kg (2475.79 lbs)	1099 kg (2422.88 lbs)

Note: Increased lead time possible for these packaging options.



[cytiva.com/bioprocess](https://www.cytiva.com/bioprocess)

Cytiva and the Drop logo are trademarks of Global Life Sciences IP Holdco LLC or an affiliate. HyClone is a trademark of Global Life Sciences Solutions USA LLC or an affiliate doing business as Cytiva.

C-Flex is a registered trademark of Saint-Gobain Performance Plastics. All other third-party trademarks are the property of their respective owners.

© 2020 Cytiva

All goods and services are sold subject to the terms and conditions of sale of the supplying company operating within the Cytiva business. A copy of those terms and conditions is available on request. Contact your local Cytiva representative for the most current information.

For local office contact information, visit [cytiva.com/contact](https://www.cytiva.com/contact)

CY14600-02Nov20-DF

