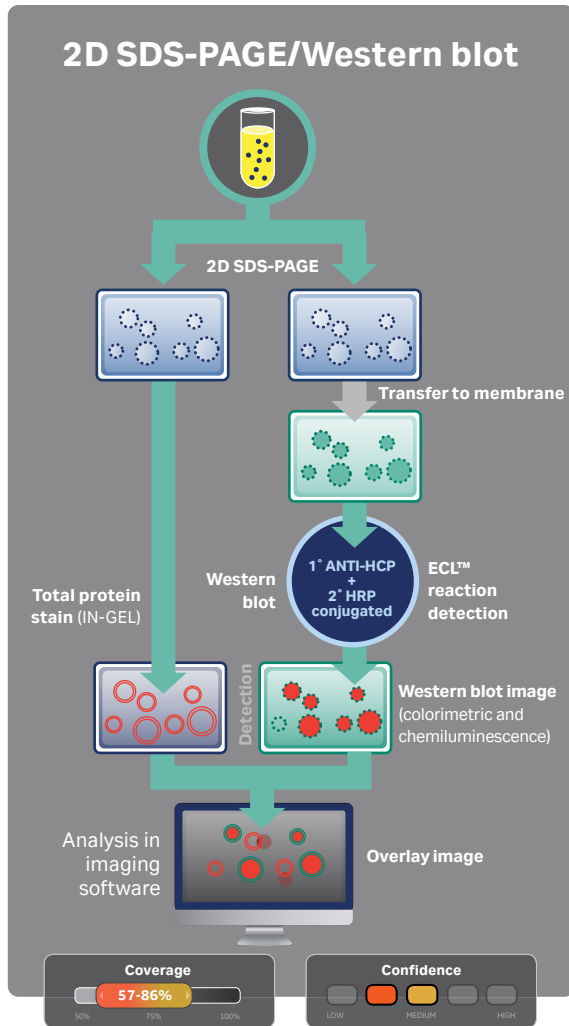
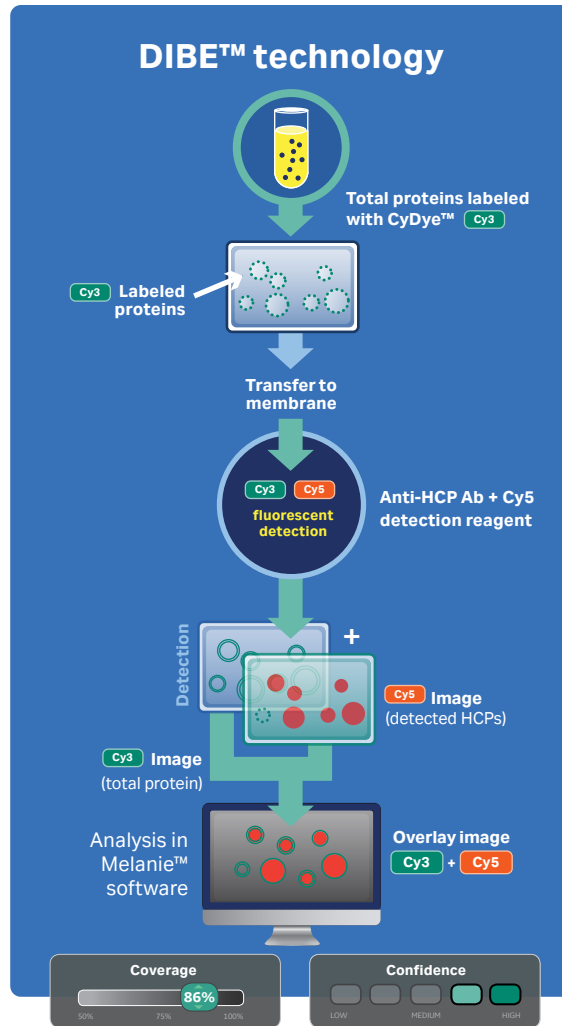


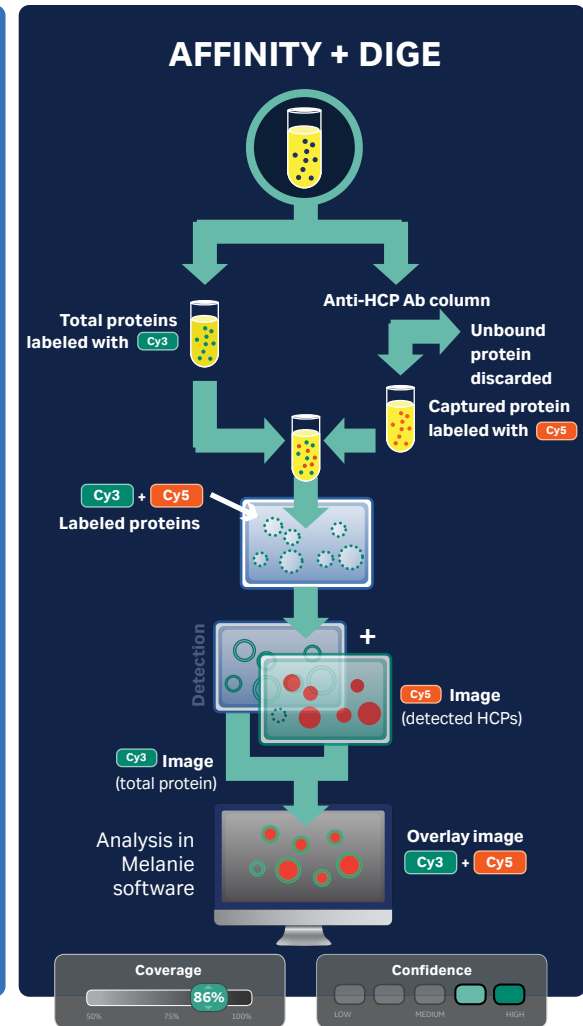
# Confidence in host cell protein (HCP) coverage assays with differential gel approaches



- ✓ Provides good separation of HCPs
- ✗ Using two gels doubles the time and effort needed
- 2D spot comparison is challenging and not standardized
- Coverage values can vary within and between labs
- Immunodetection in denatured conditions



- ✓ Using only one gel reduces time and effort needed
- No need for affinity column
- Immunodetection can be more sensitive than affinity and DIGE approach
- High-resolution = accurate identification of all signals
- ✗ Immunodetection in denatured conditions



- ✓ HCP capture in native conditions
- Avoids challenges of immunoblot transfer
- ✗ May under represent tightly bound HCPs
- Requires careful preparation of anti-HCP resin which may be difficult to reproduce
- May not be as sensitive as a Western blot