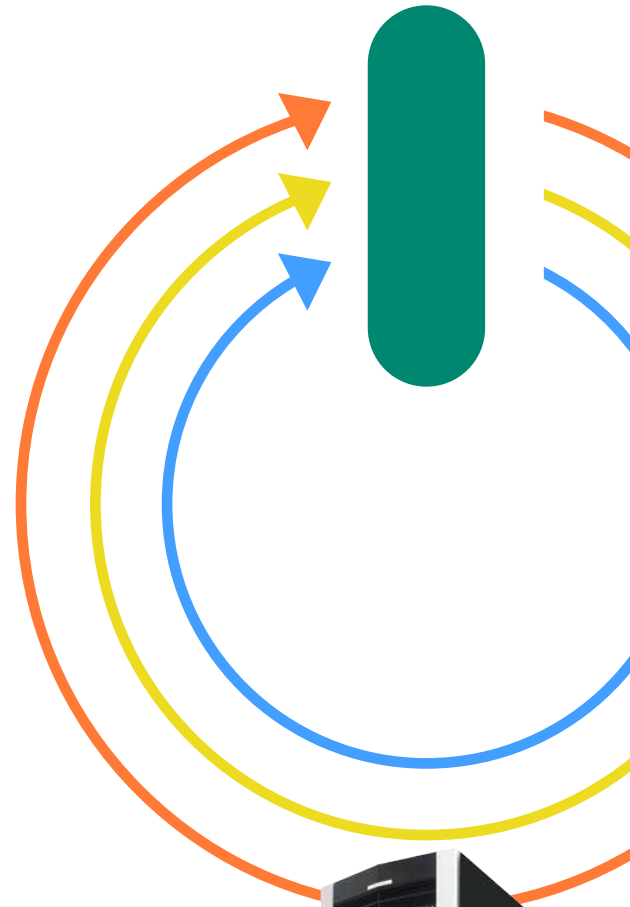


# OptiRun Service Solutions

Optimize your FlexFactory™ automation  
with preventive maintenance (PM)



## OptiRun™ LifeCycle

Assuring complex equipment is connected and communicating properly is essential to achieving your objectives in performance, productivity, and compliance.

During automation preventative maintenance, our qualified engineers run tests and inspections to ensure that all the major automation hardware components (PLC panels, Profibus panels, server racks, and HMIs) are functioning correctly. We perform more than 60 tests and inspections, and replace any parts needed.



## Service traceability



## Maximized productivity



### Outcomes you can expect from PM:

- Confirmation that your critical hardware is functioning and performing to factory specifications
- Assurance that redundancies are in place and ready to deploy when needed
- Confidence that backup systems will be available as needed to prevent interruptions

### Cytiva is the right partner for PM solutions

Cytiva trained service engineers will ensure redundant systems are functioning and check for errors related to LED and LCD displays. We also check the UPS systems and replace batteries as needed.

## Comprehensive testing and parts replacement

During PM, our trained service engineers run tests and verifications to identify and make necessary replacements and ensure your equipment performance meets our factory standards. We designed and optimized these tests throughout product development. They reflect functional tests performed during equipment manufacture and before delivery to your site. Any updates or configuration corrections required will also be performed.

### Testing and inspection

During the PM visit, our service engineers perform a comprehensive set of tests and inspections. These typically include:

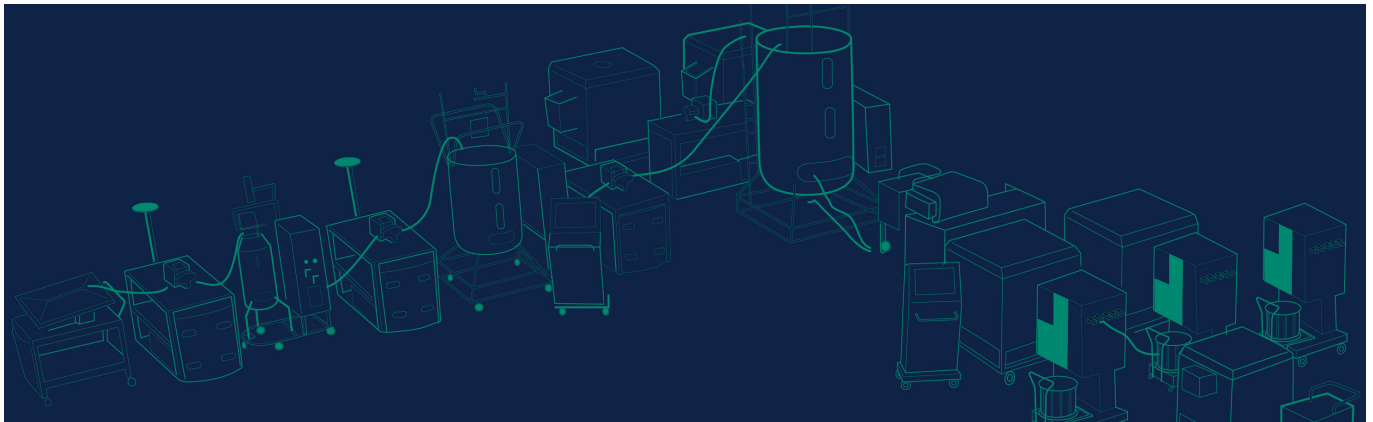
- Profibus panel inspection
- PLC panel inspection
- Server rack inspection
- Backup battery replacement
- Server software check

All above major categories include multiple tests and component checks.



### PM documentation

Our service engineers document each PM visit and provide you with a service report upon completion. Documenting PM visits supports the validation lifecycle process.



**cytiva.com**

Cytiva and the Drop logo are trademarks of Global Life Sciences IP Holdco LLC or an affiliate. FlexFactory and OptiRun are trademarks of Global Life Sciences Solutions USA LLC or an affiliate doing business as Cytiva. © 2020 Cytiva All goods and services are sold subject to the terms and conditions of sale of the supplying company operating within the Cytiva business. A copy of those terms and conditions is available on request. Contact your local Cytiva representative for the most current information. For local office contact information, visit [cytiva.com/contact](https://cytiva.com/contact)

CY12362-07Oct20-PA

